

WOOSTER - AVON LAKE RD.

83

HAROLD A. & BETTY L. HARRIS
11-15-72 D.V. 1064 P. 122

IRVEN J. & LINDA J. BENTON
9-23-43 D.V. 330 P. 219

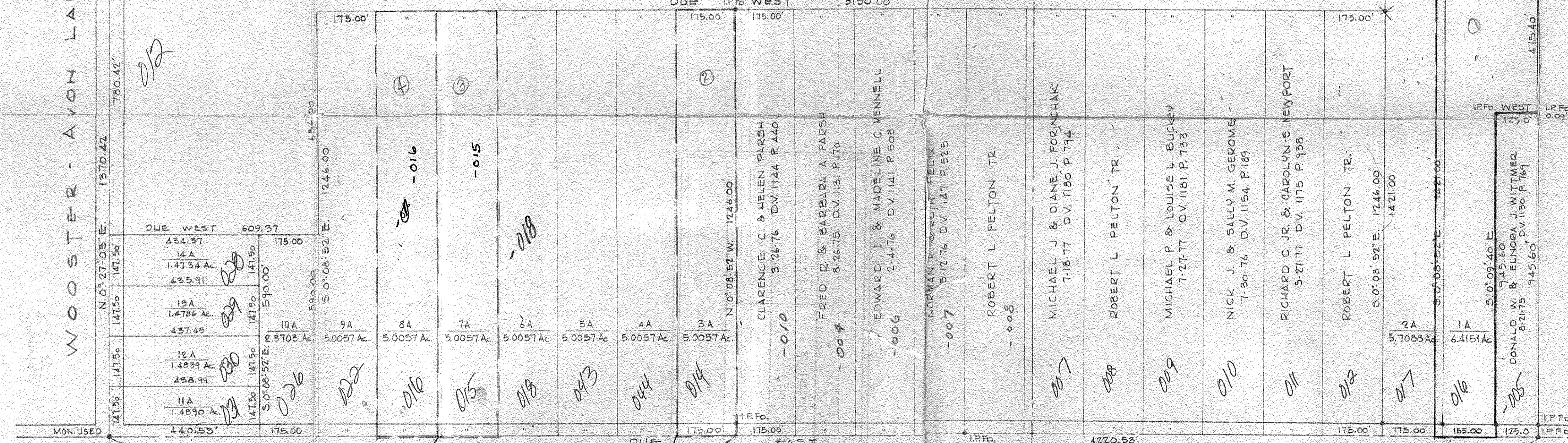
16-00-087-000-014

ALEX KRZIG
3-04-70 D.V. 1000 P. 611

THIS IS TO CERTIFY THAT IN NOVEMBER OF 1977, WE MADE AN ACCURATE SURVEY OF THE LANDS SHOWN HEREON, CONTAINING 114.7109 ACRES IN O.L.'s 86 & 87 OF GRAFTON TOWNSHIP. MEASUREMENTS ARE IN FEET AND DECIMAL PARTS THEREOF. IRON PIN MONUMENTS WERE FOUND OR SET SHOWN THIS

LAUNDON · SIMON · CAHL & ASSOC.
ENGINEERS SURVEYORS

BY *Rodger Simon*
REG. SURVEYOR No. 5101



965.53
175
3
525

NEFF ROAD

#11232

APPROVED
LORAIN CO.
MAP DEPT.
DATE 12-1-77
PAGE 16-G
BY *Rodger Simon*
VOID AFTER

Out of 16-00-086-000-011
087-000-002+013

New Numbers
16-00-086-000-012 16.88 A
087 - 014 42.37 A

Rem
086-000-013 42.07 A
087-000-015 10.86 A

2704
52
22/03

SURVEY OF LANDS OF RUTH V. MOHR ET AL
FOR
BIREX DEVELOPMENT CO. INC.

PART OF O.L.'s 86 & 87
LORAIN COUNTY
SCALE 1"=200'
OCTOBER, 1977

LAUNDON · SIMON · CAHL & ASSOC.
ENGINEERS
JOB No. 77-677

GRAFTON TOWNSHIP
OHIO
SURVEYORS
FE. 174-52

