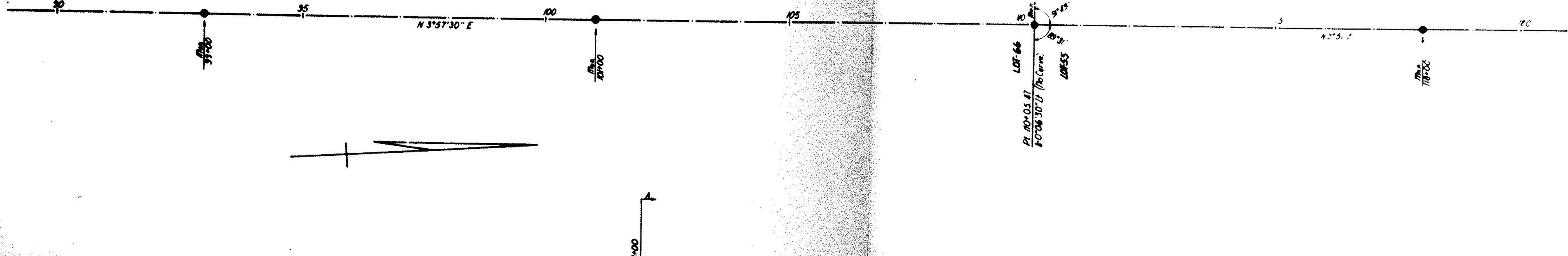


570835



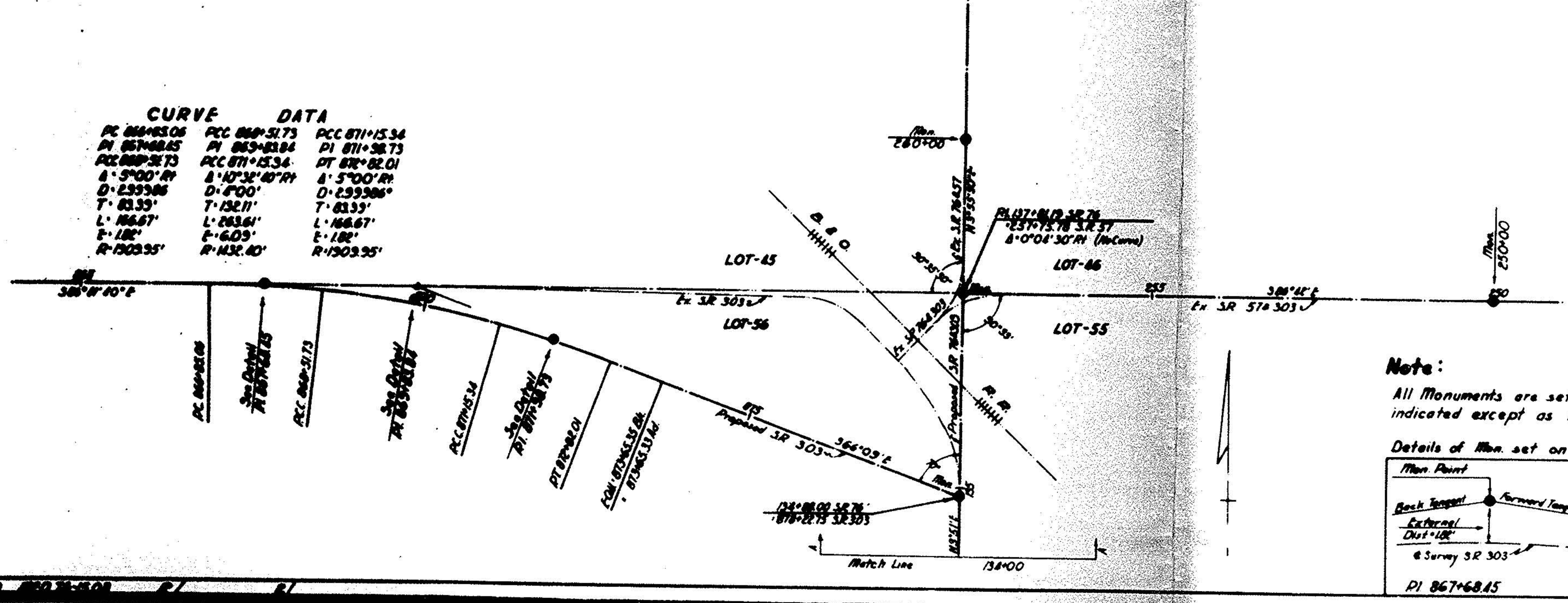
CENTERLINE LOCATION PLAN
LOR-76-000 MED-76-1508
LOR-303 (16.40-16.63) (16.69)
LITCHFIELD TWP LOTS-28&22
MEDINA COUNTY-OHIO
GRAFTON TWP LOTS-35,36,85,86,75,76,63,66,58,56,45&46
LORAIN COUNTY-OHIO



#11951
 APPROVED
 LORAIN
 MAP DEPT.
 DATE 8/2/78
 PAGE 31 of 31
 BY J. McGlinchy
 VOID AFTER

CURVE DATA

PC 864+83.06	PCC 869+51.73	PCC 871+15.34
PI 867+68.85	PI 869+83.84	PI 871+38.73
PC 869+31.73	PCC 871+45.34	PI 871+38.73
A=3700' RH	B=10' SE 40' RH	A=3700' RH
D=2333.86	D=4700'	D=2333.86
T=83.33'	T=152.21'	T=83.33'
L=166.67'	L=304.41'	L=166.67'
E=180'	E=603'	E=180'
R=2003.55'	R=1303.55'	R=2003.55'



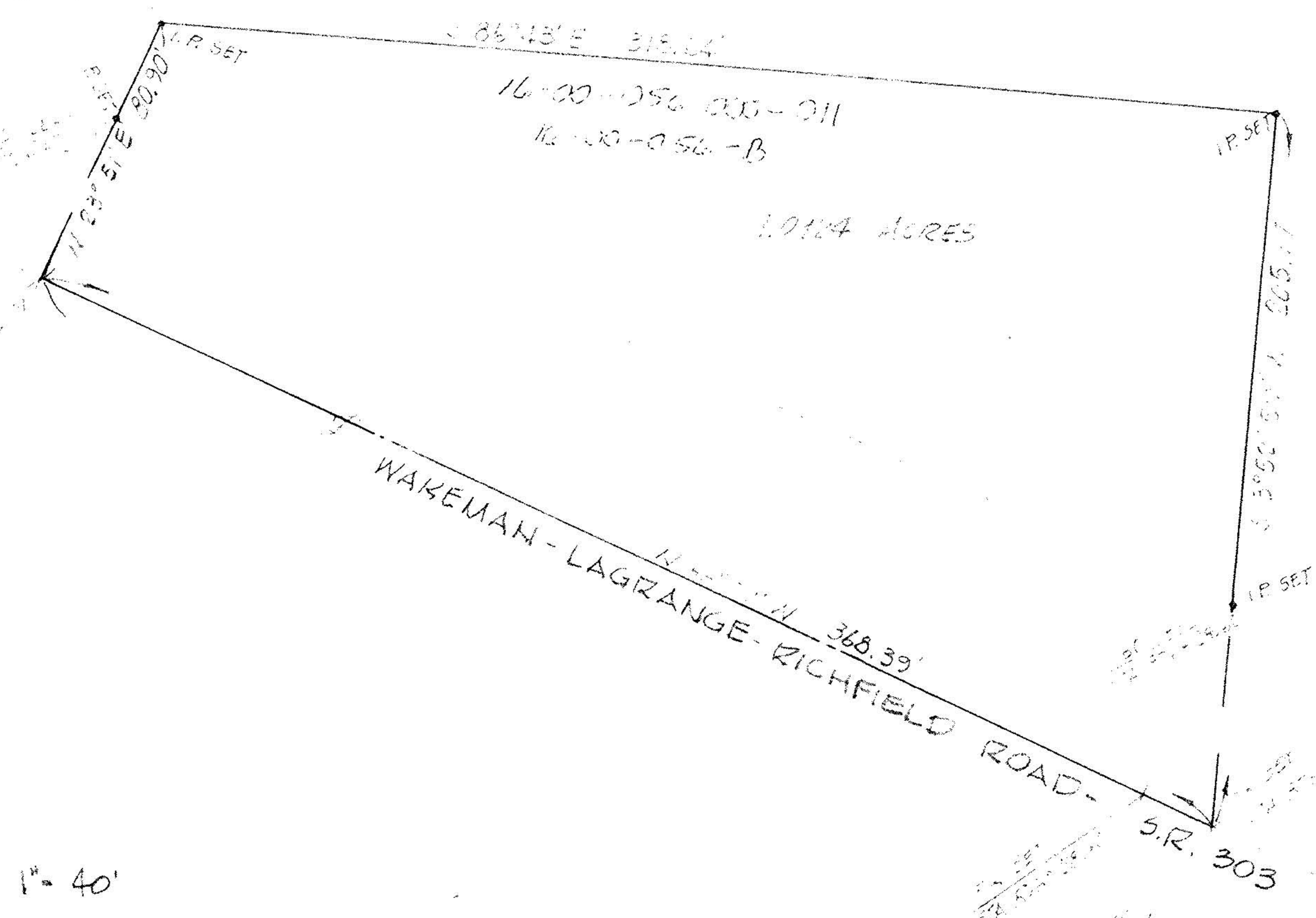
Note:

All Monuments are set on the Centerline of Survey at the stations indicated except as modified in details shown below

See page 30 for receiving stamps

Details of Mon. set on PI

Mon. Point	Mon. Point	Mon. Point
Back Sighting External Dist=128'	Forward Sighting External Dist=128'	Back Sighting External Dist=128'
Station SR 303	Station SR 303	Station SR 303
PI 867+68.85	PI 869+83.84	PI 871+38.73



#11951
 APPROVED
 LORAIN CO.
 MAP DEPT.
 DATE 8/2/78
 PAGE 31 of 31
 BY J. McGlinchy
 VOID AFTER

WOOSTER - AYON LAKE - S.R. 83

MAP of SURVEY
 PREPARED FOR LEE SOOY
 PART of ORIGINAL GRAFTON TWP LOT 56
 TOWNSHIP of GRAFTON, LORAIN COUNTY, OHIO