

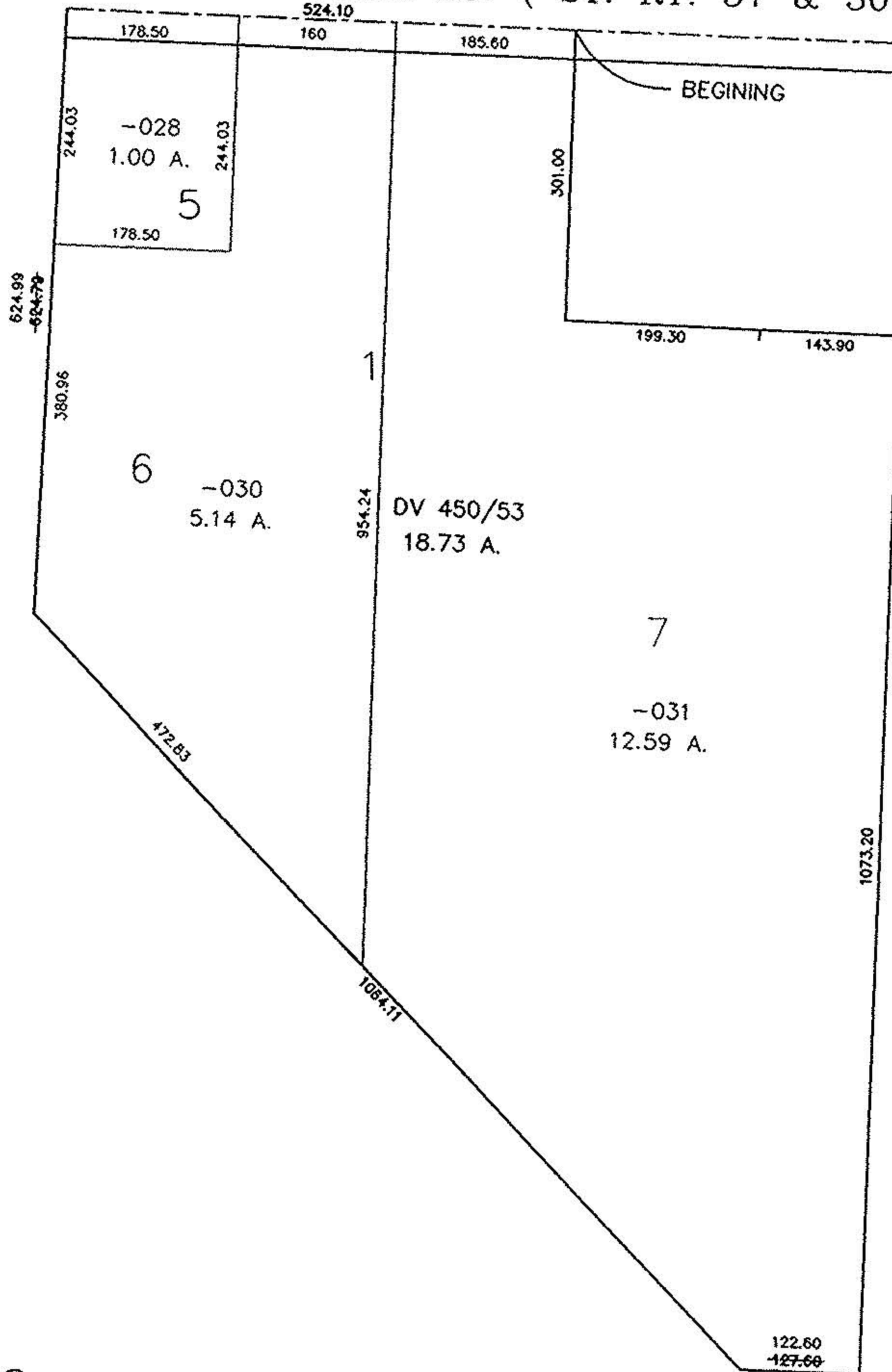
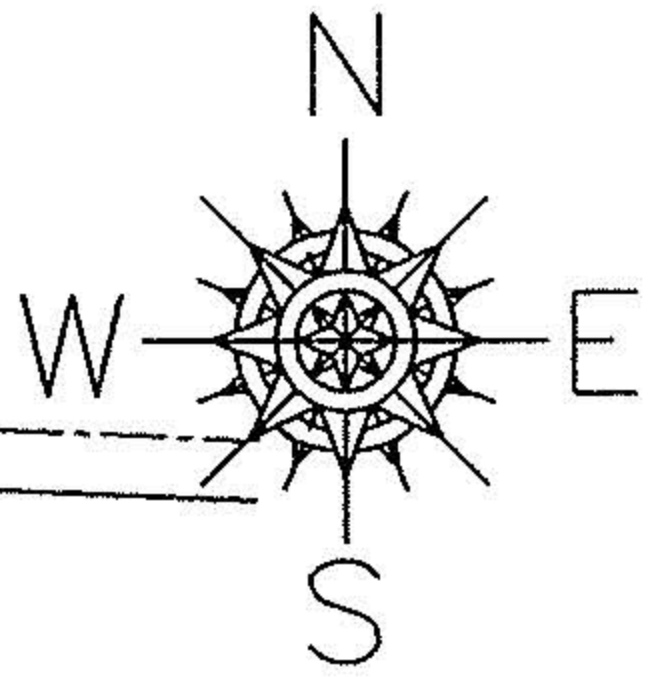
PARENT PARCEL: 16-00-055-000-028, -030, -031

CHILD PARCEL: XX-XX-XXX-XXX-XXX

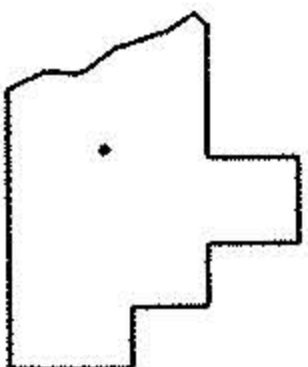
STARTING POINT: CL OF MEDINA-ELYRIA RD. & N.E. CORNER OF CEMETARY

NO. 22654-D

MEDINA - ELYRIA RD. (ST. RT. 57 & 303)



3 OF 3



SPLITS/DEEDS PROCESSED
 LORAIN COUNTY TAX MAP DEPARTMENT
 226 MIDDLE AVE. ELYRIA, OHIO

SURVEYED BY: NONE
 CLOSURE: 0.39 : 10.000
 MAP PAGE(S): 16-00-055-A
 APPROVED BY: TJS DATE: 09/22/98
 SCALE: 1" = 200 PRIOR INSTRUMENT: NONE