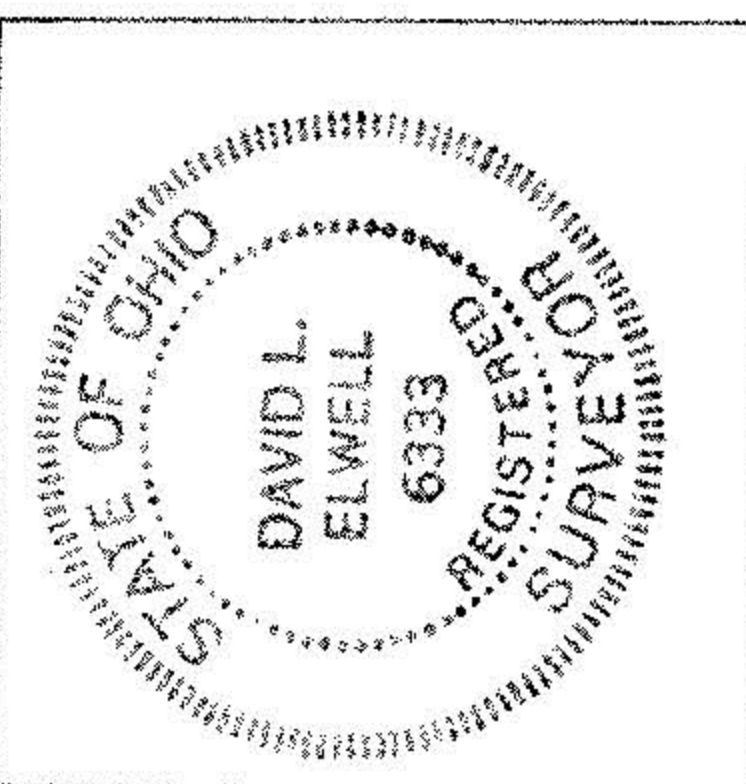


DAVID H. & JUDITH ANN LONG  
DV 1259 P. 791  
92.895 AC.

NORTH  
SCALE: 1" = 200'

CARL L. BUTCHER  
DV. 1425 P. 409  
4.02 AC.



David L. Elwell  
REGISTERED SURVEYOR NO. 6333

DEC. 10, 1987  
REV. 8-27-90  
REV. 10-11-90

**BOUNDARY SURVEY**

OF PART OF  
LAGRANGE TOWNSHIP ORIGINAL LOTS 62 & 79  
TOWNSHIP OF LAGRANGE COUNTY OF LORAIN

STATE OF OHIO  
PREPARED BY  
**KS ASSOCIATES INC.**  
ENGINEERS & SURVEYORS

#19252

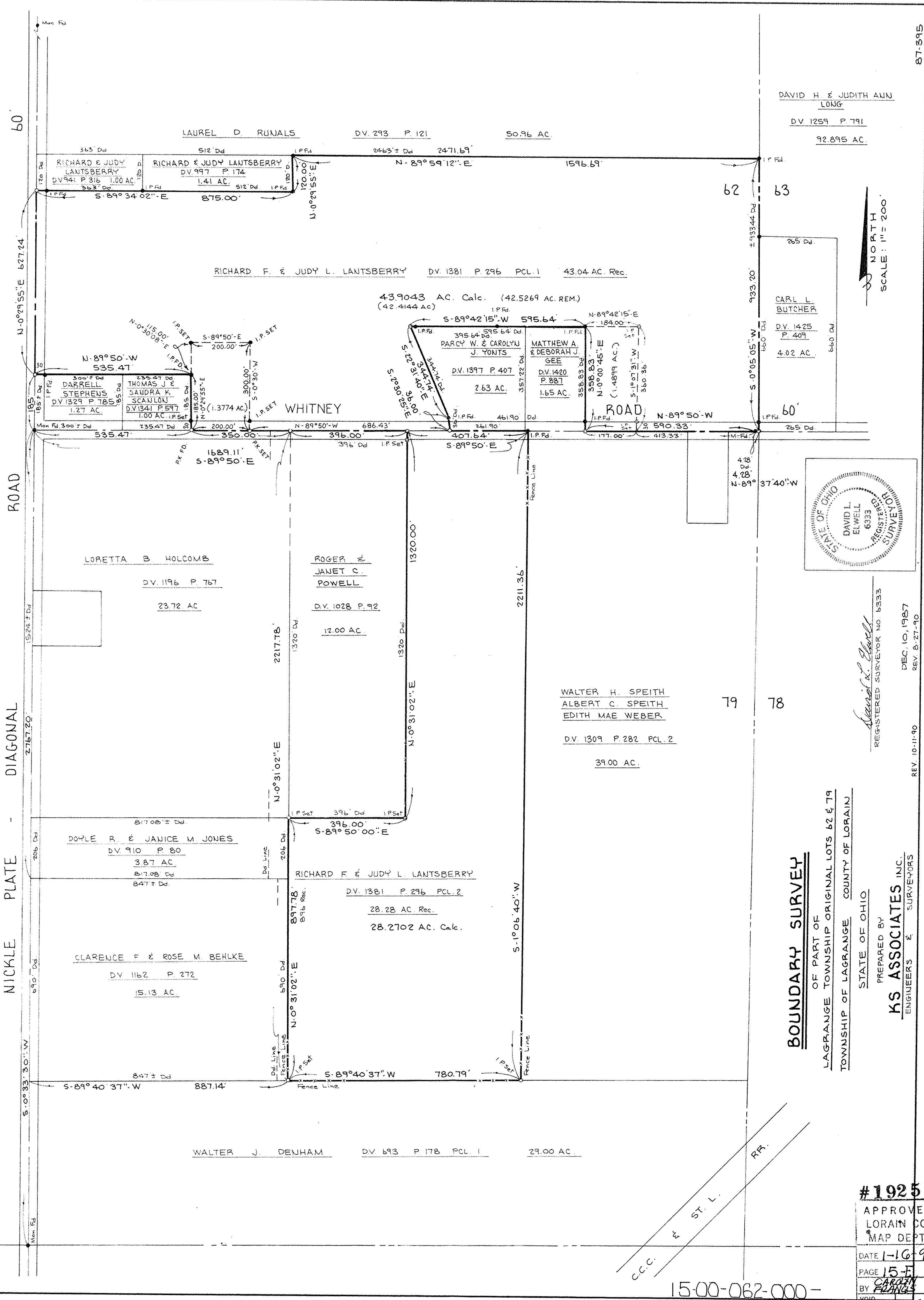
APPROVED  
LORAIN CO.  
MAP DEPT.

DATE 1-16-91

PAGE 15-F

BY CAROL FRANCES  
VOID AFTER #1-19252

15-00-062-000-



60'

ROAD

DIAGONAL

PLATE

NICKLE

ROAD

60'

LAUREL D. RUNALS DV. 293 P. 121 50.96 AC.

RICHARD & JUDY LANTSBERRY DV. 997 P. 174 1.41 AC.

RICHARD F. & JUDY L. LANTSBERRY DV. 1381 P. 296 PCL. 1 43.04 AC. Rec.

43.9043 AC. Calc. (42.4144 AC.)

DARRELL STEPHENS DV. 1329 P. 785 1.27 AC.

THOMAS J. & SAUDRA K. SCANLON DV. 1341 P. 597 1.00 AC. I.P. Set

WHITNEY

PARCY W. & CAROLYN J. YONTS DV. 1397 P. 407 2.63 AC.

MATTHEW A. & DEBORAH J. GEE DV. 1420 P. 887 1.65 AC.

LORETTA B. HOLCOMB DV. 1196 P. 767 23.72 AC.

ROGER & JANET C. POWELL DV. 1028 P. 92 12.00 AC.

WALTER H. SPEITH ALBERT C. SPEITH EDITH MAE WEBER DV. 1309 P. 282 PCL. 2 39.00 AC.

DOYLE R. & JANICE M. JONES DV. 910 P. 80 3.87 AC.

RICHARD F. & JUDY L. LANTSBERRY DV. 1381 P. 296 PCL. 2 28.28 AC. Rec. 28.2702 AC. Calc.

CLARENCE F. & ROSE M. BEHLKE DV. 1162 P. 272 15.13 AC.

WALTER J. DENHAM DV. 693 P. 178 PCL. 1 29.00 AC.

62 63

60'

79 78

C.C.C. ST. L. RR.