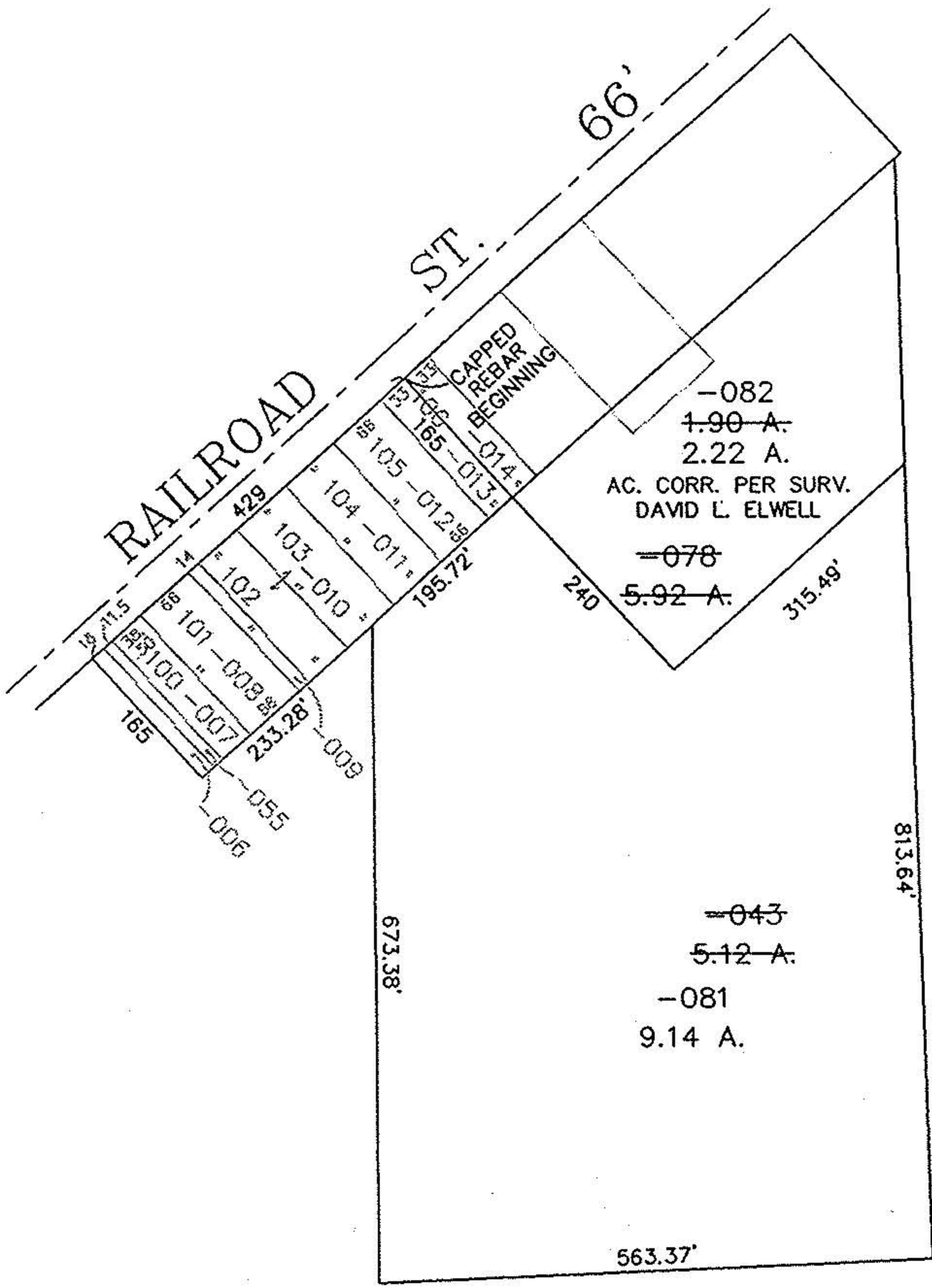
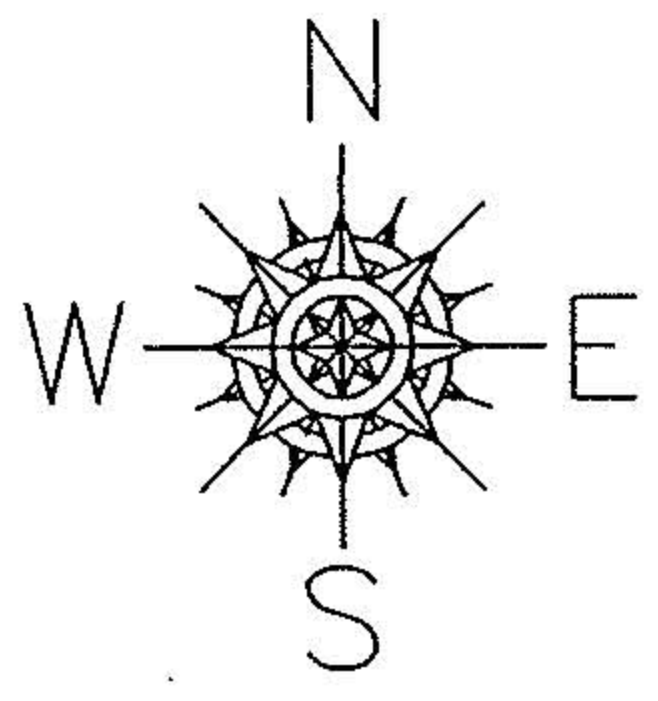


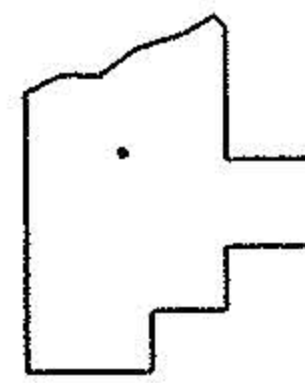
15-00-055-104-078

PARENT PARCEL: 15-00-055-104-078, & 043
CHILD PARCEL: 15-00-055-104-081 & 082
STARTING POINT: 5/8 IN. CAPPED REBAR SET IN S.E. ROW OF RAILROAD ST. &
ITS INTERSECTION OF N.E. 33' OF S/L 106

NO. 22505



PRIOR INSTRUMENT: 980514998
PRIOR INSTRUMENT: OR 368/296
PRIOR INSTRUMENT: DV 710/57
PRIOR INSTRUMENT: DV 485/229
PRIOR INSTRUMENT: DV 1391/964



SPLITS/DEEDS PROCESSED
LORAIN COUNTY TAX MAP DEPARTMENT
226 MIDDLE AVE. ELYRIA, OHIO

SURVEYED BY: DAVID L. ELWELL
CLOSURE: 0.03 : 10,000
MAP PAGE(S): 15-00-055-A
APPROVED BY: TJS DATE: 07/31/98
SCALE: 1" = 200'