

Ac. For - 228-500
 O.L. 13+28 - LAGRANGE TWP
 JOHN R. HAMILTON
 REG. SURV. #6861 5/88

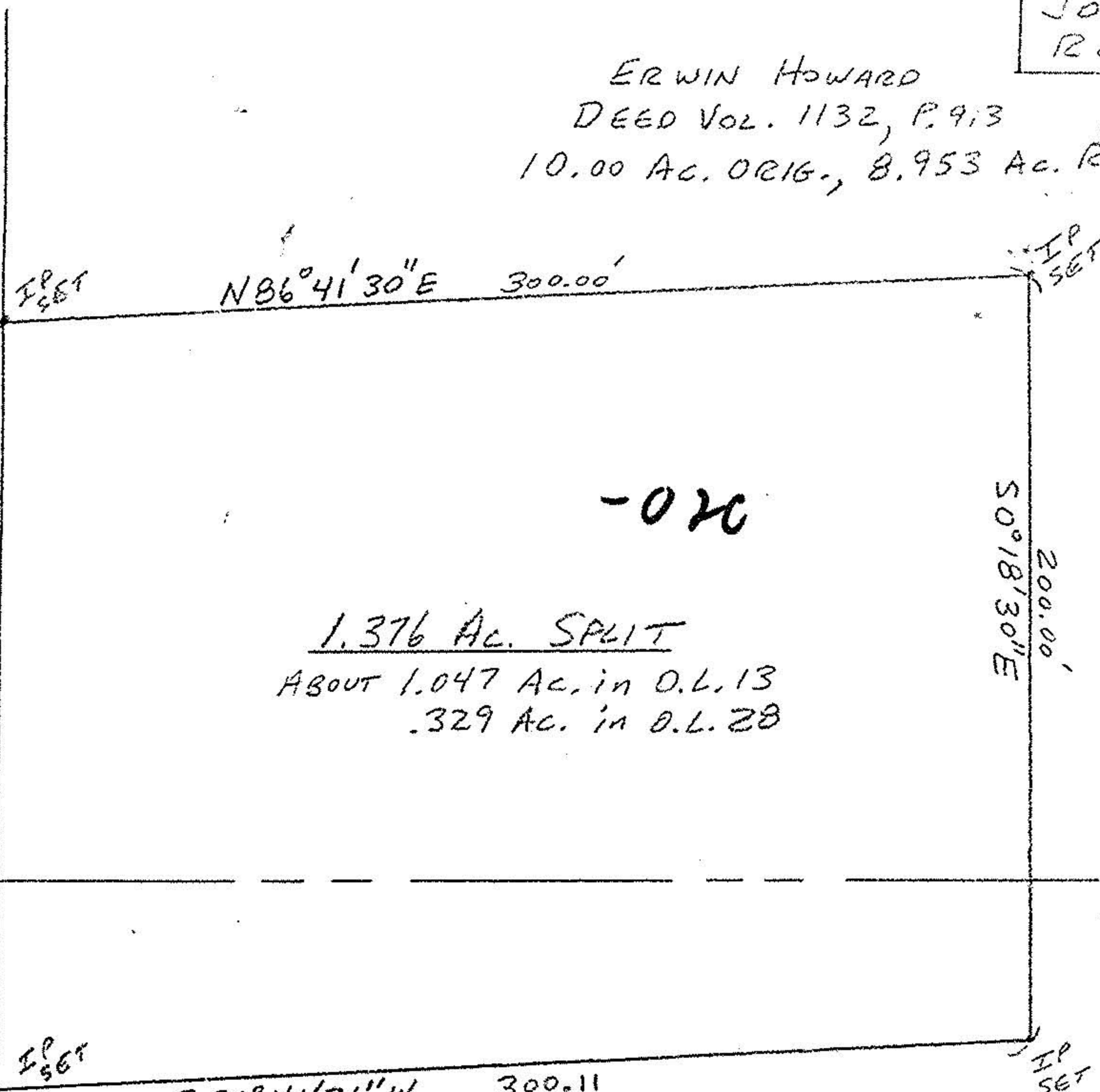
ERWIN HOWARD
 DEED VOL. 1132, P. 913
 10.00 AC. ORIG., 8.953 AC. REM.

NORTH
 SCALE 1"=50'

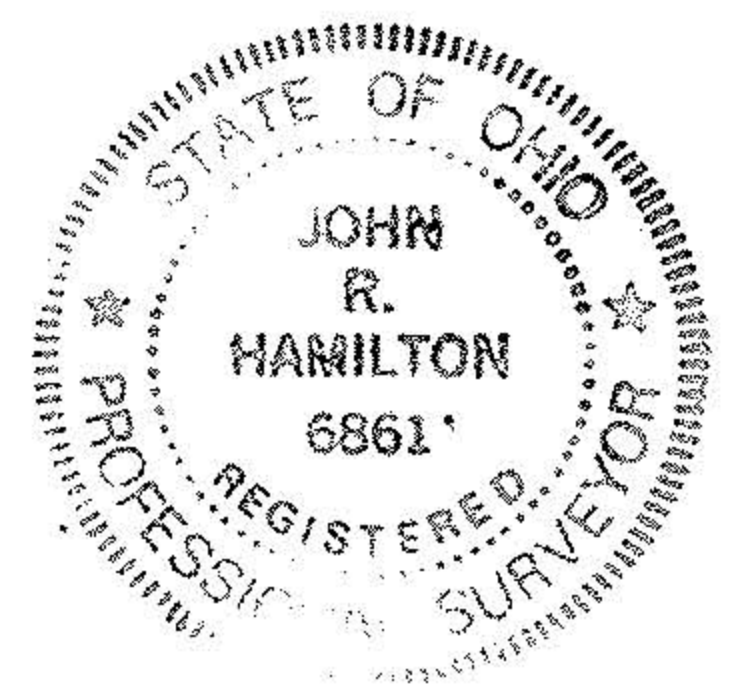
WHEELER CO.
 N 0°18'30" W

56.00'

N 0°12'10" W



-020
1.376 AC. SPLIT
 ABOUT 1.047 AC. in O.L. 13
 .329 AC. in O.L. 28



O.L. 13
 O.L. 28

#17979

ERWIN HOWARD
 DEED VOL. 1132, P. 913
 35.50 AC. ORIG., 35.171 AC. REM.

APPROVED LORAIN CO. MAP DEPT.	
DATE 6-17-88	
PAGE 15-D	
BY T. McMan	
VOID AFTER	17979

BEARINGS TAKEN FROM CO. ENGINEER'S MONUMENTING RECORDS.