

12-067

PLAT OF SURVEYS FOR
RAYMOND E. LONG

ORIGINAL LOT NO. 7 - LAGRANGE TWP.

LORAIN COUNTY OHIO

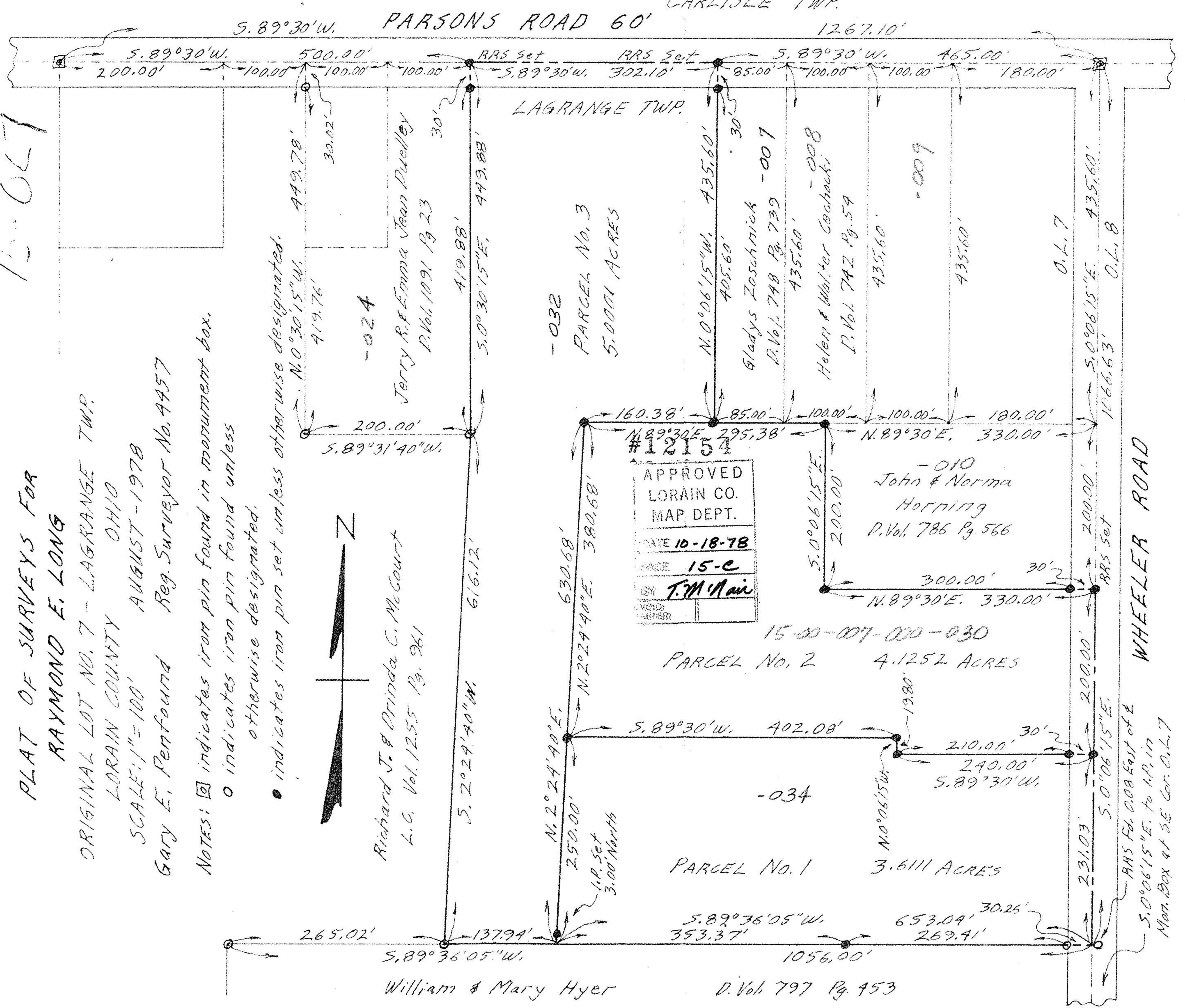
SCALE: 1"=100' AUGUST-1978

GARY E. PENFOUND Reg. Surveyor No. 4957

NOTES: indicates iron pin found in monument box.
 indicates iron pin found unless otherwise designated.
 indicates iron pin set unless otherwise designated.



Richard J. & Drinda C. McCourt
L.G. Vol. 1255 Pg. 261



S. 89°30'W.

PARSONS ROAD 60'

CARLISLE TWP.

1267.10'

S. 89°30'W.

500.00'

RRS set

RRS set

S. 89°30'W.

465.00'

200.00'

100.00'

100.00'

100.00'

S. 89°30'W.

302.10'

85.00'

100.00'

100.00'

180.00'

LAGRANGE TWP.

N. 0°30'15"W.

449.78'

30.02'

-024

Jerry R. & Emma Jean Duvelley
D. Vol. 1091 Pg. 23

30'

A. 19.88'

S. 0°30'15"E.

449.88'

-032

PARCEL No. 3
5.0001 ACRES

N. 0°06'15"W.

435.60'

405.60'

30'

Gladys Zoschnick
D. Vol. 748 Pg. 739 -007

30'

435.60'

-008

Helen & Walter Cochock
D. Vol. 742 Pg. 54

435.60'

-009

435.60'

435.60'

O.L. 7

S. 0°06'15"E.

435.60'

O.L. 8

200.00'

S. 89°31'40"W.

616.12'

160.38'

N. 89°30'E.

295.38'

#12154

APPROVED
LORAIN CO.
MAP DEPT.
DATE 10-18-78
PAGE 15-C
BY T.M. MAIR
VOID
AFTER

85.00'

100.00'

100.00'

100.00'

180.00'

N. 89°30'E.

330.00'

200.00'

30'

300.00'

N. 89°30'E.

330.00'

RRS set

200.00'

1066.63'

-010
John & Norma
Horning
D. Vol. 786 Pg. 566

15-00-007-000-030
PARCEL No. 2 4.1252 ACRES

N. 2°24'40"E.

630.68'

380.68'

S. 89°30'W.

402.08'

-034

19.80'

210.00'

240.00'

S. 89°30'W.

30'

30'

RRS set

200.00'

200.00'

S. 0°06'15"E.

231.03'

200.00'

200.00'

S. 0°06'15"E.

231.03'

RRS set

200.00'

200.00'

S. 0°06'15"E.

231.03'

RRS set

200.00'

200.00'

S. 0°06'15"E.

231.03'

RRS set

200.00'

200.00'

S. 0°06'15"E.

231.03'

RRS set

200.00'

200.00'

S. 0°06'15"E.

231.03'

265.02'

S. 89°36'05"W.

William & Mary Hyer

137.94'

250.00'

N. 2°24'40"E.

653.09'

30.26'

353.37'

S. 89°36'05"W.

1056.00'

269.41'

653.09'

30.26'

1056.00'

S. 89°36'05"W.

269.41'

653.09'

30.26'

269.41'

653.09'

30.26'

269.41'

653.09'

30.26'

269.41'

653.09'

30.26'

269.41'

653.09'

30.26'

269.41'

RRS Fd. 0.08 East of E
Mon. Box at SE Cor. O.L. 7
5.0°06'15"E. to I.P. in
Mon. Box at SE Cor. O.L. 7

WHEELER ROAD