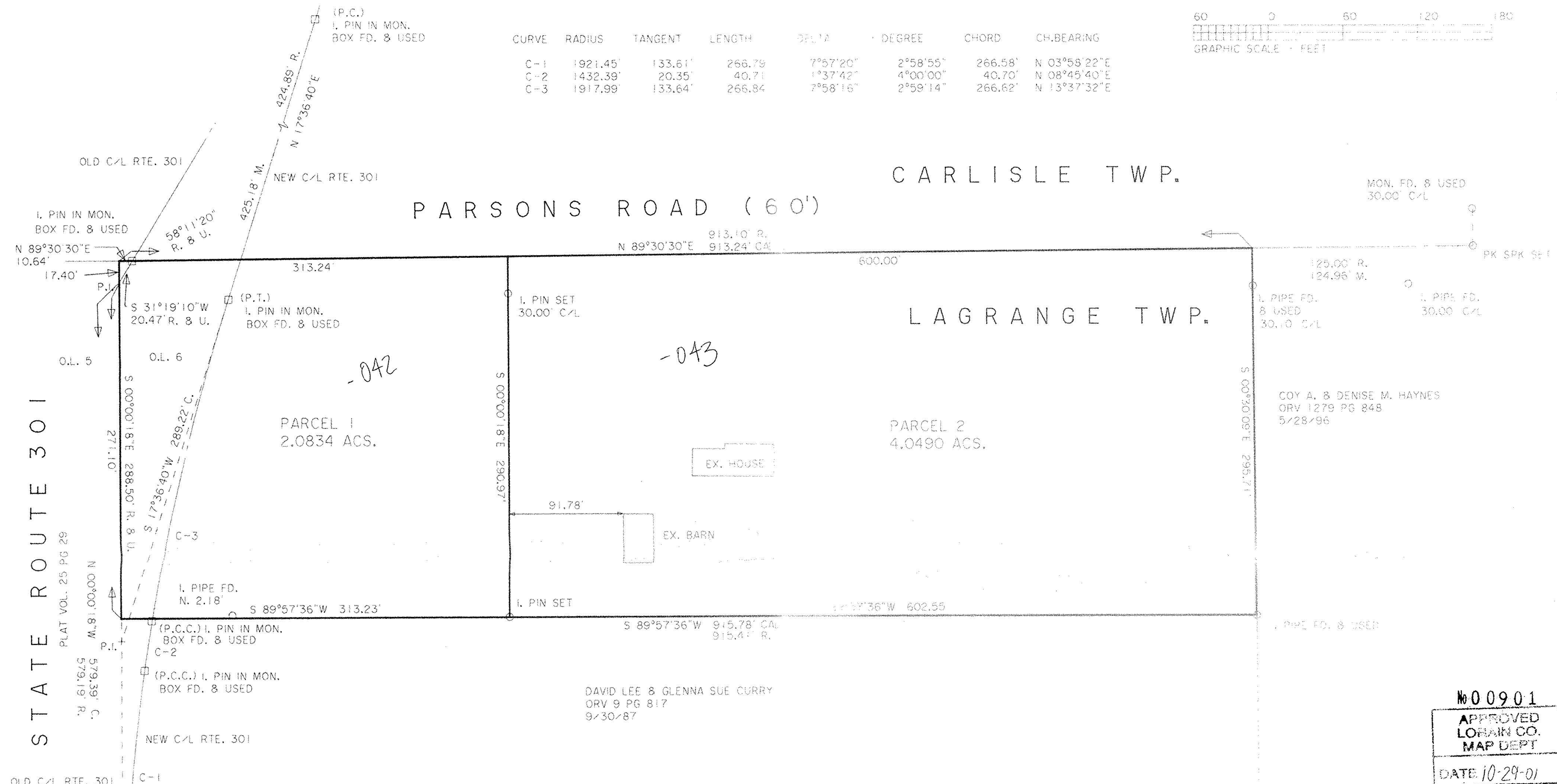


CURVE	RADIUS	TANGENT	LENGTH	DELTA	DEGREE	CHORD	CH. BEARING
C-1	1921.45'	133.61'	266.79	7°57'20"	2°58'55"	266.58'	N 03°55'22"E
C-2	1432.39'	20.35'	40.71	1°37'42"	4°00'00"	40.70'	N 08°45'40"E
C-3	1917.99'	133.64'	266.84	7°58'16"	2°59'14"	266.62'	N 13°37'32"E

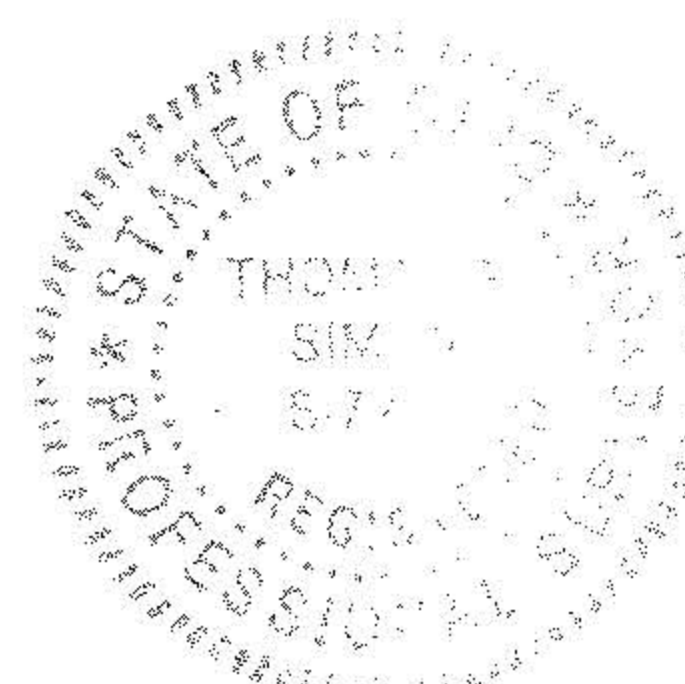


BASIS OF BEARINGS IS THE CENTERLINE OF PARSONS RD.  
(NORTH 89°30'30" EAST). IRON PINS SET ARE 5/8" DIAMETER  
30" LONG WITH PLASTIC CAPS "T. SIMON, S-7775".

DIMENSIONS SHOWN ON THIS PLAT ARE EXPRESSED  
IN FEET AND DECIMAL PARTS THEREOF. ALL BEARINGS  
ARE TO ANCESTRAL MERIDIAN AND ARE USED TO  
INDICATE ACCURATELY. PERMANENT MONUMENTS  
WERE FOUND AND SET AT ALL POINTS INDICATED  
HEREON, AND I HEREBY CERTIFY TO BE CORRECT.

**THOMAS SIMON & ASSOCIATES, INC.**  
PROFESSIONAL LAND SURVEYORS

COBBLESTONE CORNER PROFESSIONAL CENTER  
39049 CENTER RIDGE ROAD  
NORTH RIDGEVILLE, OHIO 44039  
(440) 327-2925  
FAX 327-2964



*T.A.S.*  
THOMAS A. SIMON  
REG. PROFESSIONAL SURVEYOR  
NO. S-7775

No 00901  
APPROVED  
LOBAIN CO.  
MAP DEPT  
DATE 10-29-01  
PAGE 15-C  
BY JHATFIELD  
#01-00901

PLAT OF SURVEY & SPLIT  
FOR

DRIVER J. & KAREN S. MATH  
BEING KNOWN AS PART OF ORIGINAL LOT NO. 6  
LAGRANGE TOWNSHIP

COUNTY OF LOHAIN STATE OF OHIO  
AUGUST 2001 SCALE: 1" = 60'

15-00-006-000-033-042-043