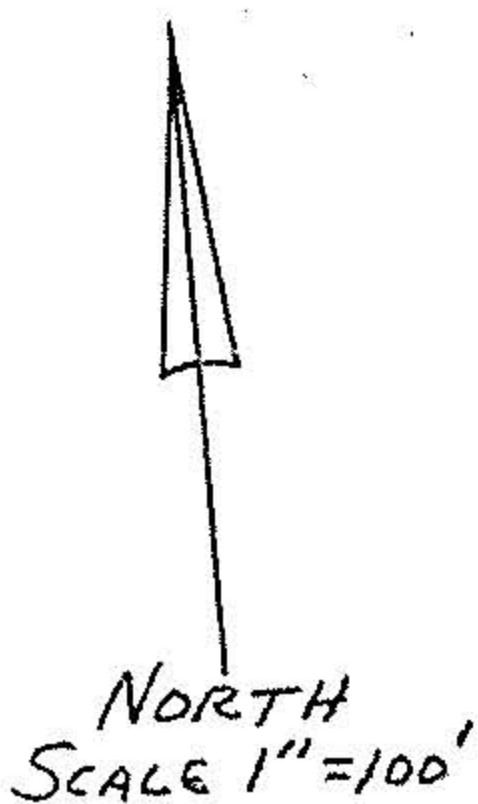


☒ S.R. 303 S 86° 7' 55" E (REC.)

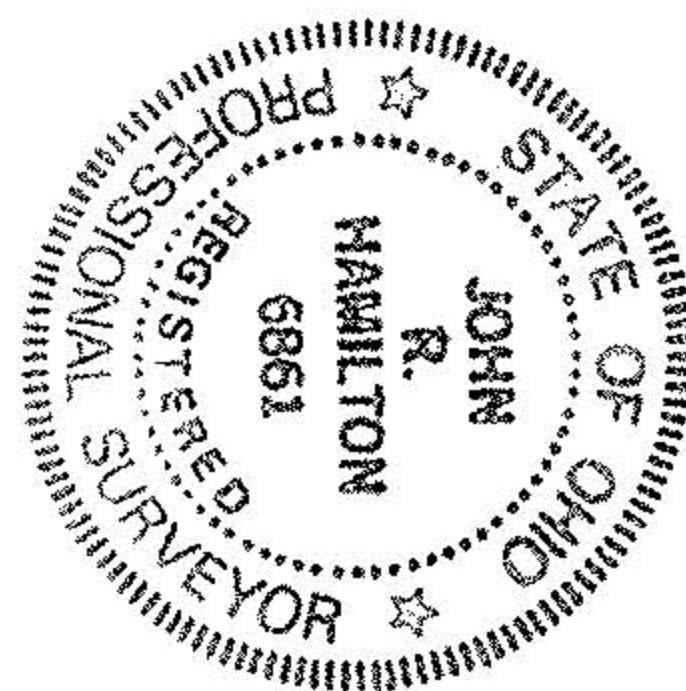
M.B.

O.L. 60

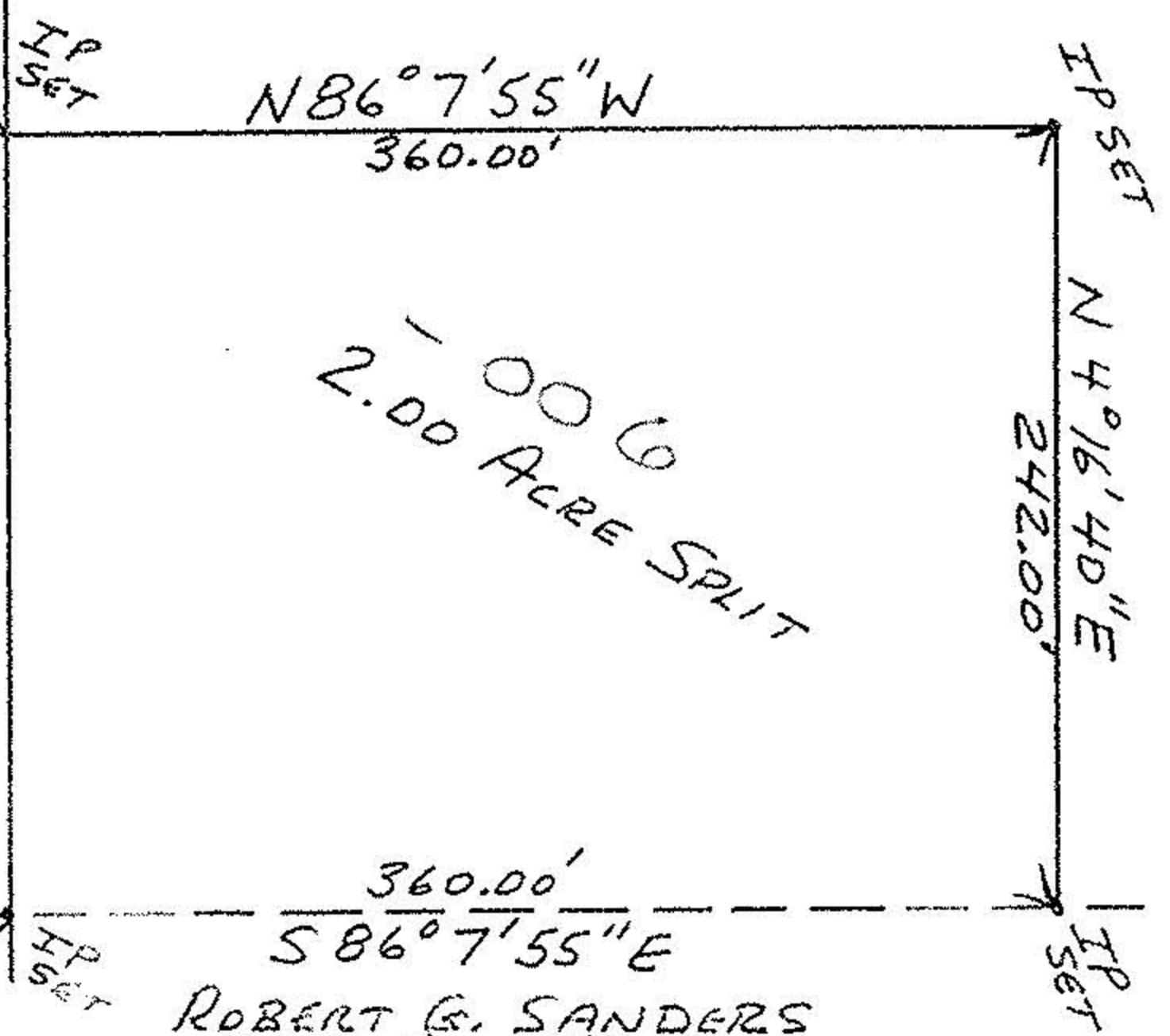
O.L. 59



☒ NICKLE PLATE DIAGONAL RD. S 40° 16' 40" W 901.4'



MABEL A. WALKER
DEED VOL. 904 P. 85D
48.96 AC.
46.96 AC. REMAINDER



ROBERT G. SANDERS
DEED VOL. 455 P. 90

SURVEY OF 2.00 ACRE SPLIT FOR LARRY WALKER
LAGRANGE TWP. - O.L. 59 - LAGRANGE COUNTY
16891

SCALE: 1" = 100'

DATE: 6/13/86

JOHN R. HAMILTON
REG. SURV. #6861

APPROVED BY:

APPROVED

SURVEYING CO.

MAP DEPT.

7-84-86

DRAWN BY JRH
REVISED

DRAWING NUMBER

PAGE 15-E

BY G. Francis