

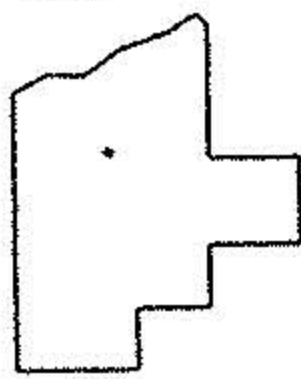
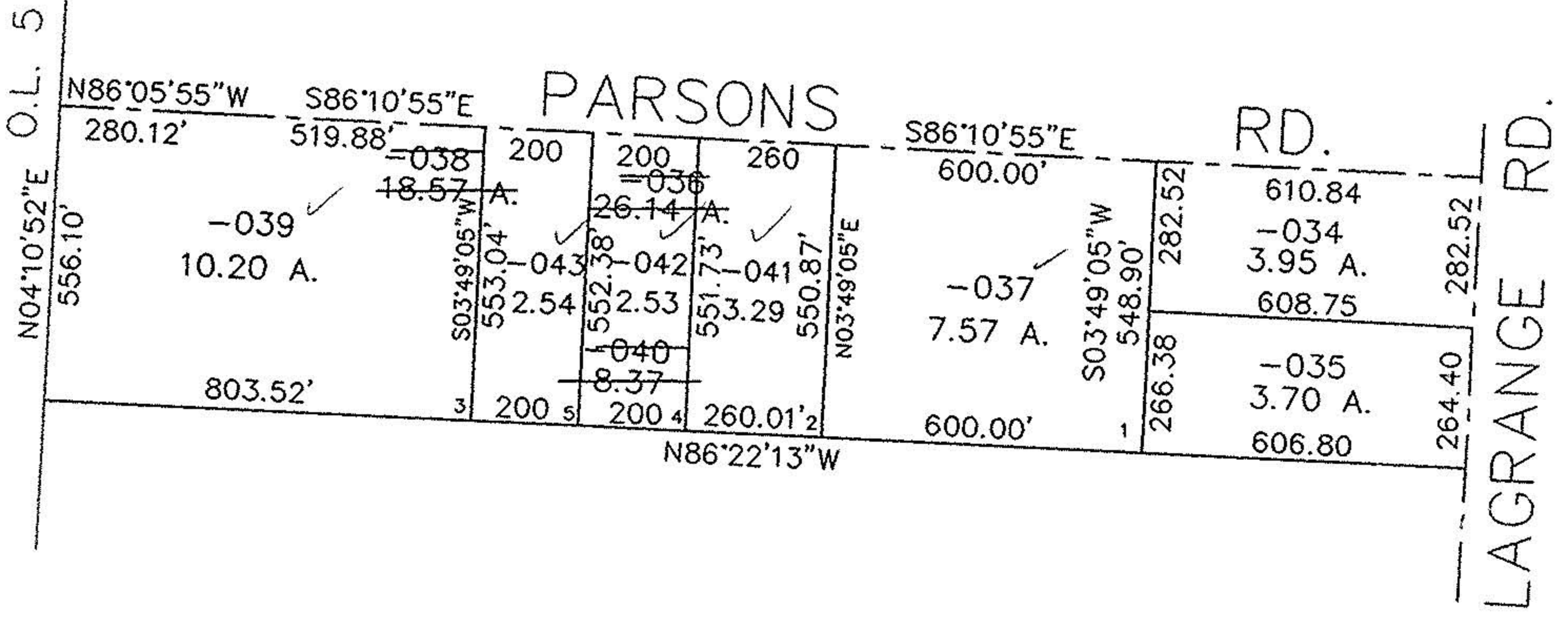
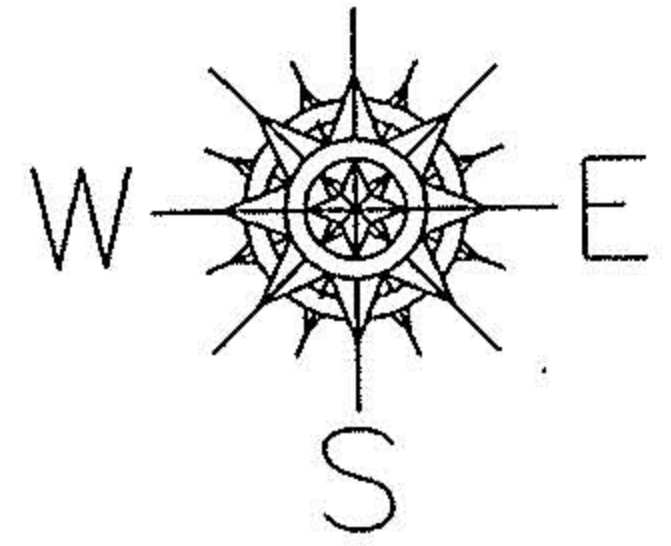
PARENT PARCEL: 15-00-005-000-036

CHILD PARCEL: 15-00-005-000-037 THRU -043

STARTING POINT: CL. OF PARSONS RD. & NW. CORNER OF O.L. 5

NO. 22530

TRANS 5/14/98 N



SPLITS/DEEDS PROCESSED

LORAIN COUNTY TAX MAP DEPARTMENT  
226 MIDDLE AVE. ELYRIA, OHIO

SURVEYED BY: RODGER G. SIMON

CLOSURE: 0.006 : 10.000

MAP PAGE(S): 15-B

APPROVED BY: TJS DATE: 05/13/98

SCALE: 1" = 400 PRIOR INSTRUMENT: 980512006