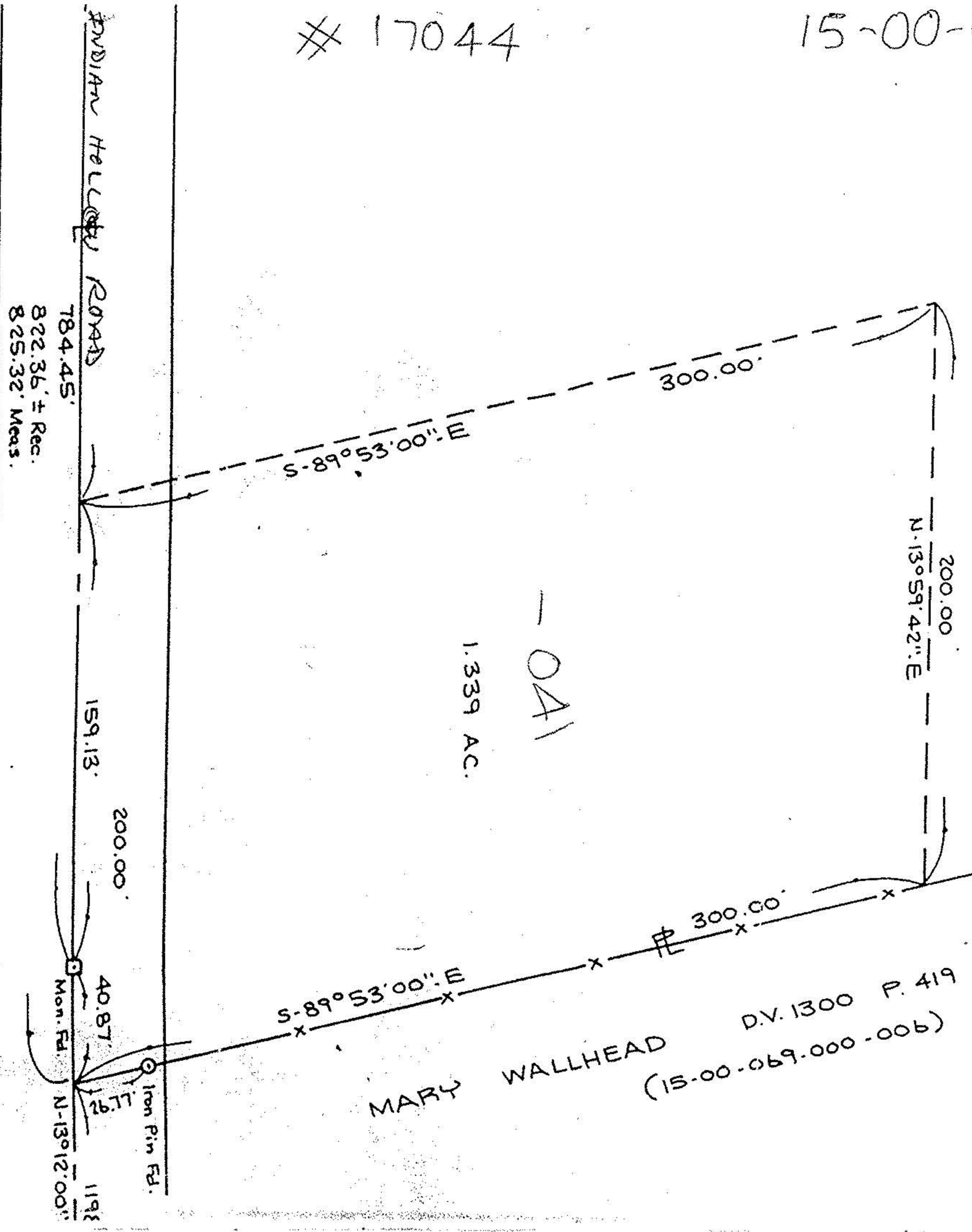


15-H

17044

15-00-069-000 400

4377A



BOUNDARY SURVEY

OF PART OF
ORIGINAL LAGRANGE TOWNSHIP LOT 69

EXISTING FENCE
17044
2551.56' ± Re

APPROVED 28. APPROVED LORAIN CO. MAP DEPT.	
DATE	9-30-86
PAGE	15-H
BY	C. FRANCIS
VOID AFTER	17044

MARY WALLHEAD
D.V. 1300 P. 419
(15-00-069.000-006)

784.45'
822.36' ± Rec.
825.32' Meas.

40.87'
Mon. FD.
Iron Pin FD.
1198'
N-13°12'00"

159.13'
200.00'

300.00'

200.00'
N-13°59'42"E

S-89°53'00"E

300.00'

1.339 AC.

041