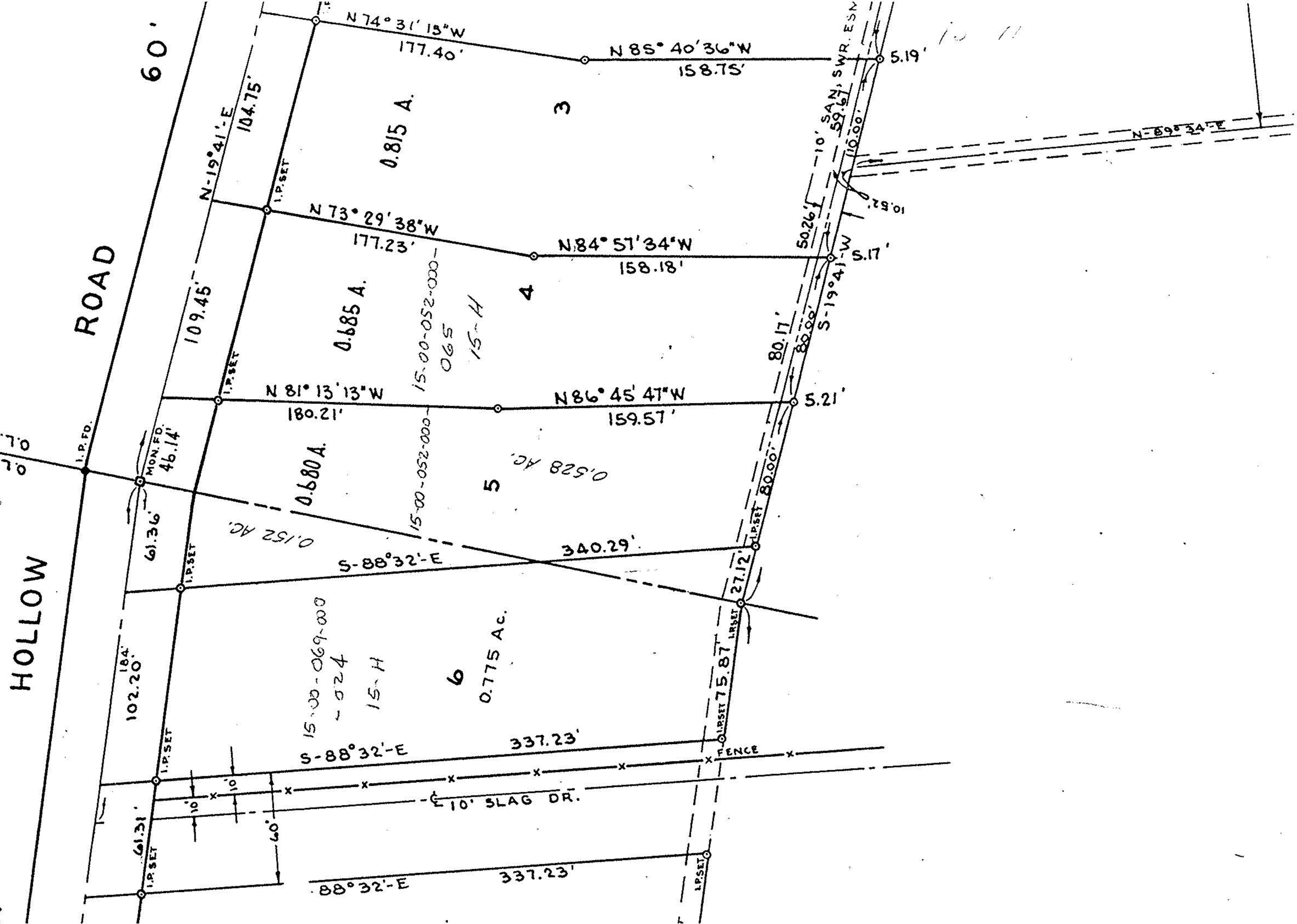


9966
KSH

AST Location
0.69
0.52
0.70

69
0.52
0.70



HOLLOW

ROAD

60'

88° 32' E

337.23'

10' SLAG DR.

FENCE

LP SET 75.87

LP SET 27.12

LP SET 80.00

LP SET 80.00

LP SET 10.00

LP SET 59.67

LP SET 10.52

I.P. PD.

I.P. SET

I.P. SET

I.P. SET

I.P. SET

I.P. SET

I.P. SET

I.P. SET

I.P. SET

I.P. SET

I.P. SET

61.31'

102.20'

61.36'

MON. PD 46.14'

109.45'

104.75'

60'

15-00-069-000
- 024
15-H

15-00-052-000
065
15-H

15-00-052-000
065
15-H

15-00-052-000
065
15-H

0.775 Ac.

0.528 Ac.

0.680 A.

0.685 A.

0.815 A.

80.17'

80.00'

80.00'

50.26'

59.67'

10.52'

5.17'

5.19'

5.19'

5.19'

N-89° 34'-E