

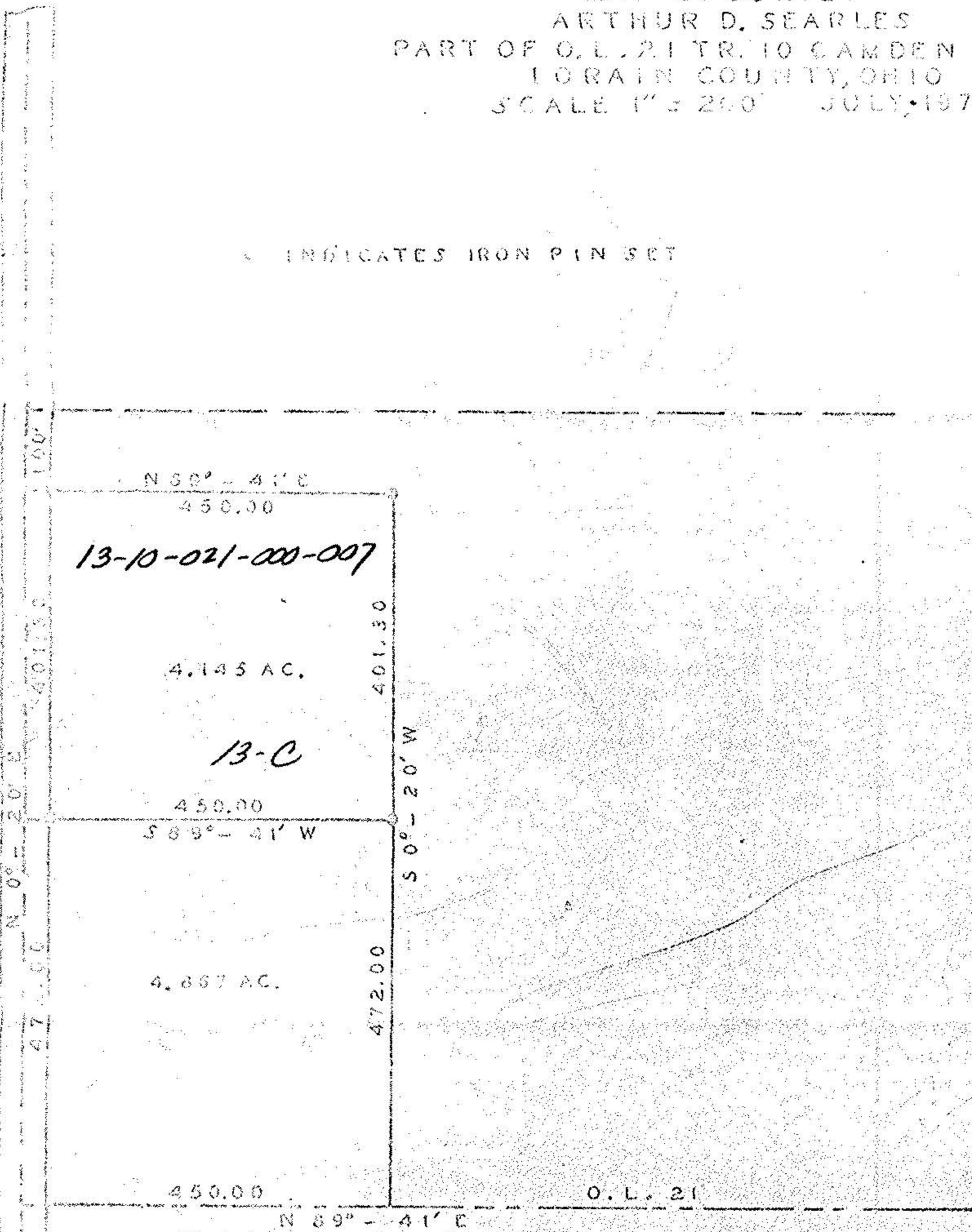
13-10-021-000

13-10-021
13-C

MAP OF SURVEY
 ARTHUR D. SEARLES
 PART OF O.L. 21 TR. 10 CAMDEN TWP.
 LORAIN COUNTY, OHIO
 SCALE 1" = 200' JULY, 1975

INDICATES IRON PIN SET

ASHLAND - KIPTON RD. S.R. 511



13-10-021-000-007

4.145 AC.

13-C

450.00

S 89° - 41' W

4.857 AC.

450.00

N 89° - 41' E

401.30

S 0° - 20' W

472.00

O.L. 21

JCS NO. 70-75-15

WILLIAM L. FOX, REG. SURVEYOR
NO. 5878

Neff & Associates, Inc.