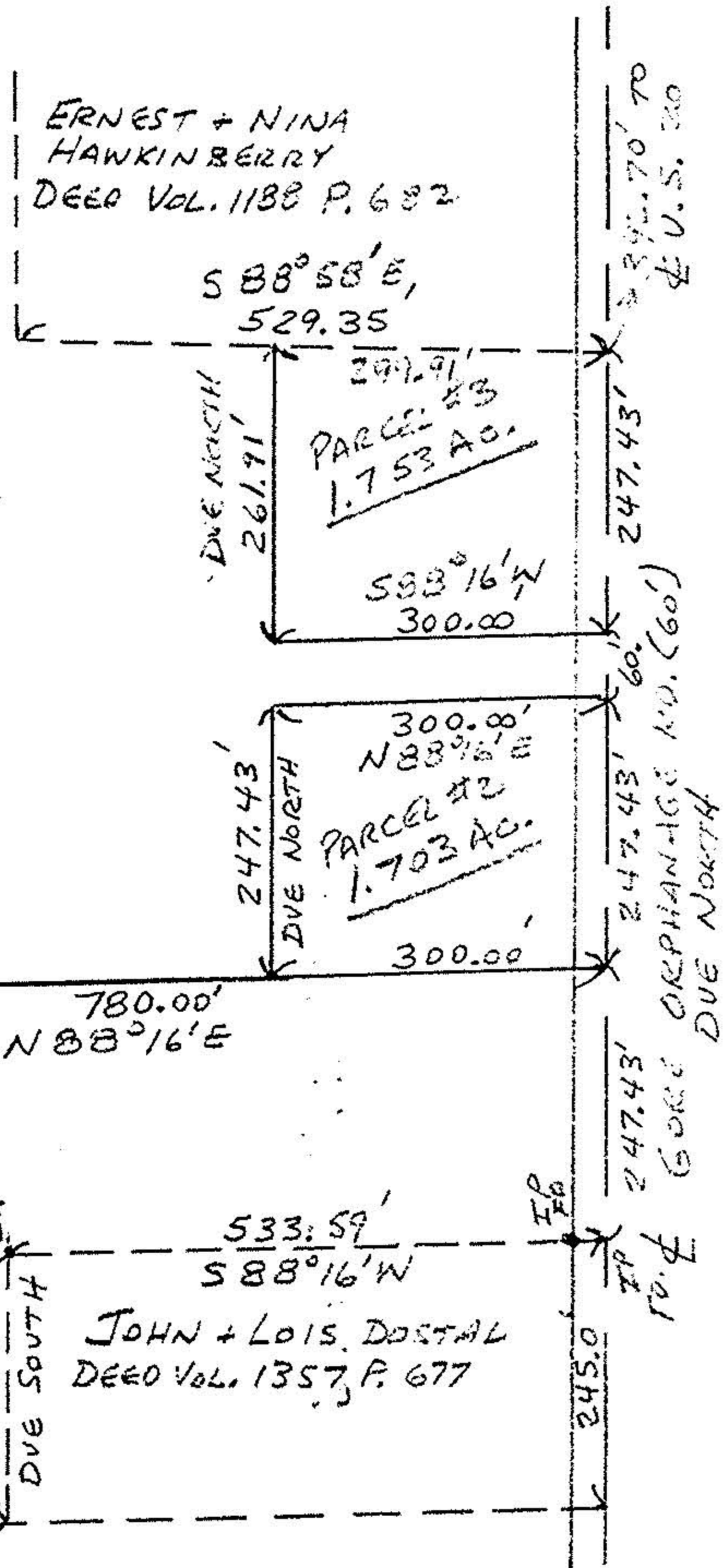


#18980

APPROVED	
LORAIN CO.	
MAP DEPT.	
DATE 6-11-90	
PAGE 13-A	
BY CAROLYN FRANCIS	
VOID AFTER	18980

NORTH
SCALE 1"=200'

ROBERT C. + GERMAINE MATUS
 DEED VOL. 920 P. 465
 48.52 AC. ORIG.
 39.05 AC. REM.



MIKE I. + CARRIE M. HOZALSKI
 DEED VOL. 944, P. 704

MAP OF PART OF CAMDEN TWP. O.L. #1 TRACT #10
 FOR BOB MATUS
 FEB. 1990 SCALE 1"=200'
 JOHN R. HAMILTON - REG. SURV. #6861