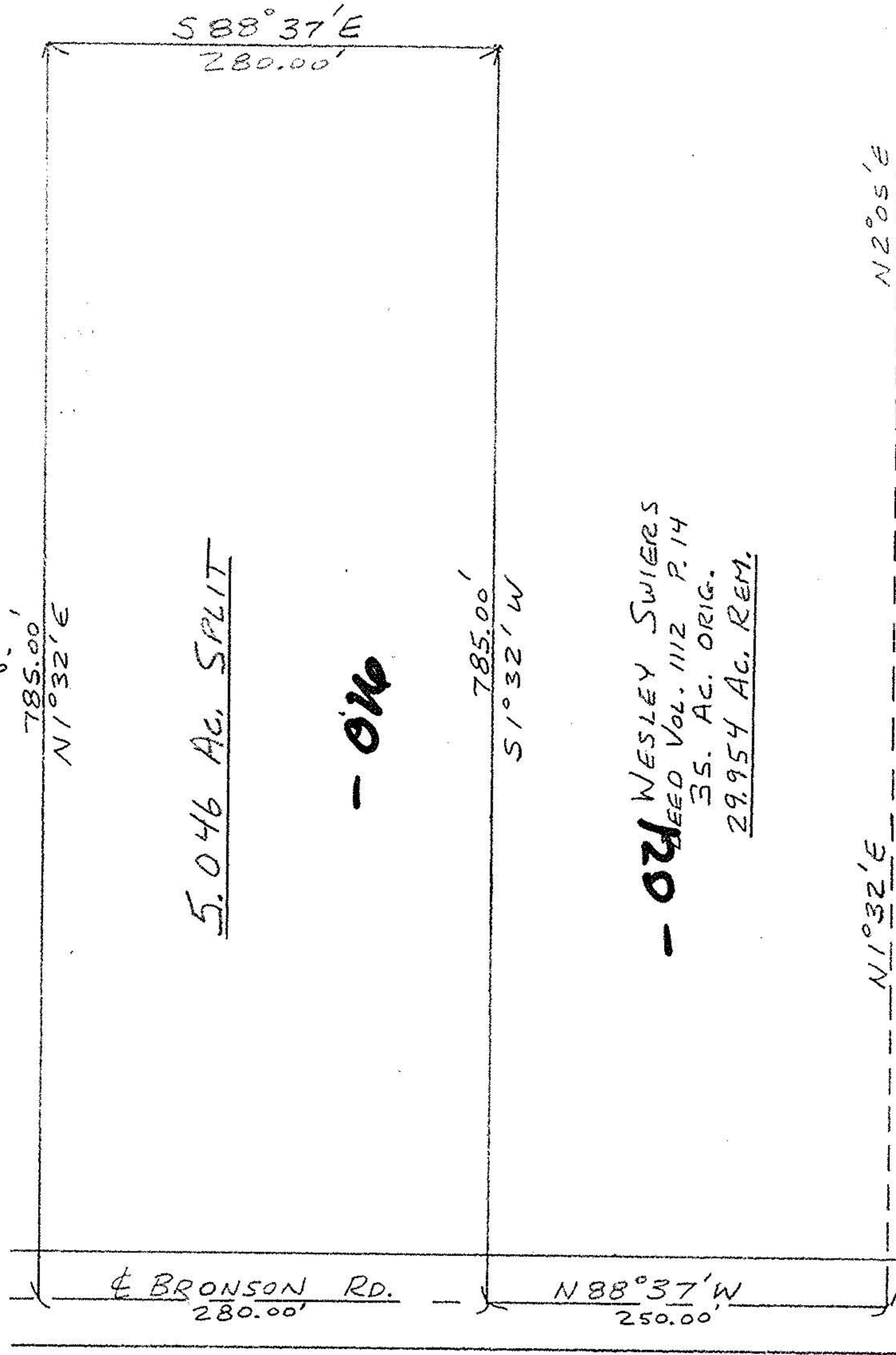


13-09-013-000

#18136
O.L. 13, TRACT 9
CAMDEN TWP.

13-G



5.046 AC. SPLIT

- ONE

- 021 -
WESLEY SWIERS
DEED VOL. 1112 P. 14
35. AC. ORIG.
29.954 AC. REM.

N2°05'E

N1°32'E

JAMES L. + MARIAN
WOODRUM DEED VOL. 1103 P. 14

BRENNER
18136
APPROVED
MORAIN CO.
MAP DEPT.

DATE	
PAGE	13-G
BY	Carol Francis
VOL	# 18136
AFTER	



MAP OF 5.046 AC. SPLIT FOR W. SWIERS
O.L. 13-TRACT 9-CAMDEN TWP.
SEPT. 1988

JOHN R. HAMILTON
REG. SURV. #6861