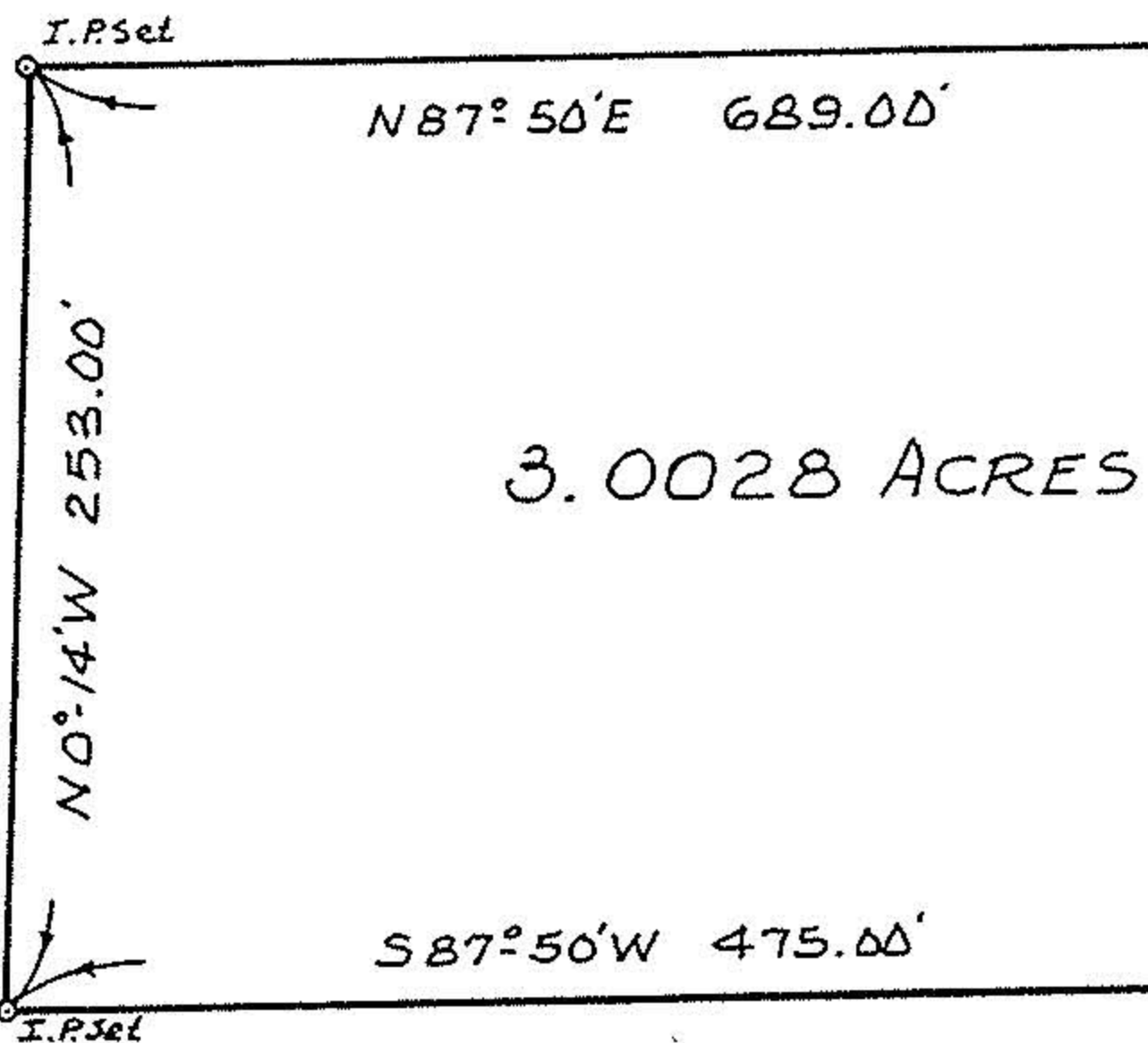


13-C

#19110

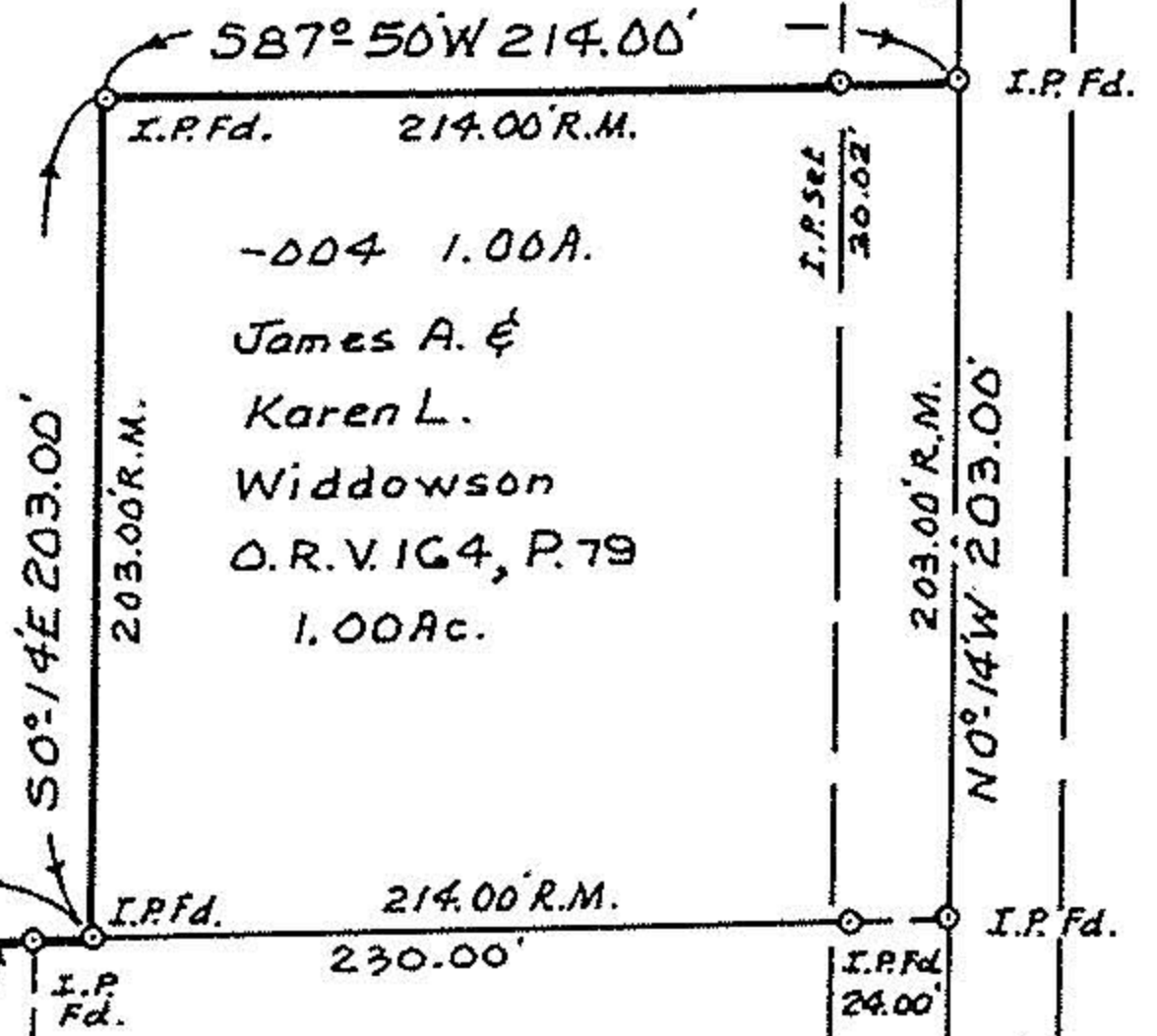
NORTH 13-11-007-000-

-009 21.62 A  
Dan Dudley Reed  
V. 1220, P. 62  
21.62 Ac.



3.0028 ACRES

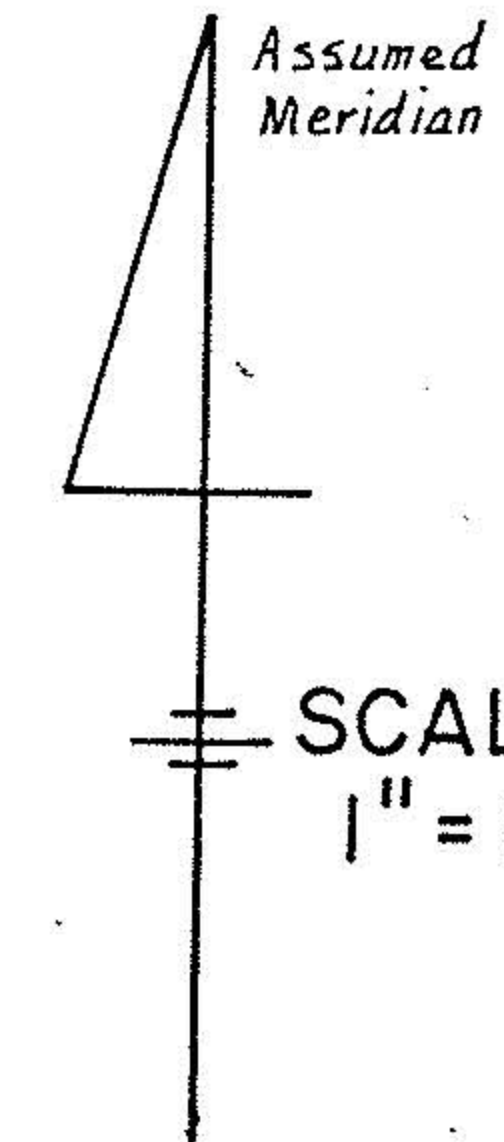
-011 16.31 A.  
John & Lavone Cherry Jr.  
V. 381, P. 320  
89.21 Ac.



-004 1.00 A.  
James A. &  
Karen L.  
Widdowson  
O.R.V. 164, P. 79  
1.00 Ac.

-007  
Dane L. Wolfe  
O.R.V. 113, P. 400  
1.26 Ac.

-010  
Dane Wolfe  
O.R.V. 245, P. 908  
0.713 Ac.



#19110

APPROVED
LORAIN CO.
MAP DEPT.
DATE 9-5-90
PAGE 13-C
BY CAROLYN FRANCIS
VOID AFTER #19110

MAP OF SURVEY OF 3.0028 ACRES OF  
LAND PART OF ORIG. LOT NO. 7, TRACT II,  
CAMDEN TWP., LORAIN COUNTY, OHIO  
Made at request of Dan Reed  
By Charles P. Waryu, Reg. Surveyor No. 5029  
August, 1990

Charles P. Waryu  
CHARLES P. WARYU, REG. SURVEYOR NO. 5029

1:10,000