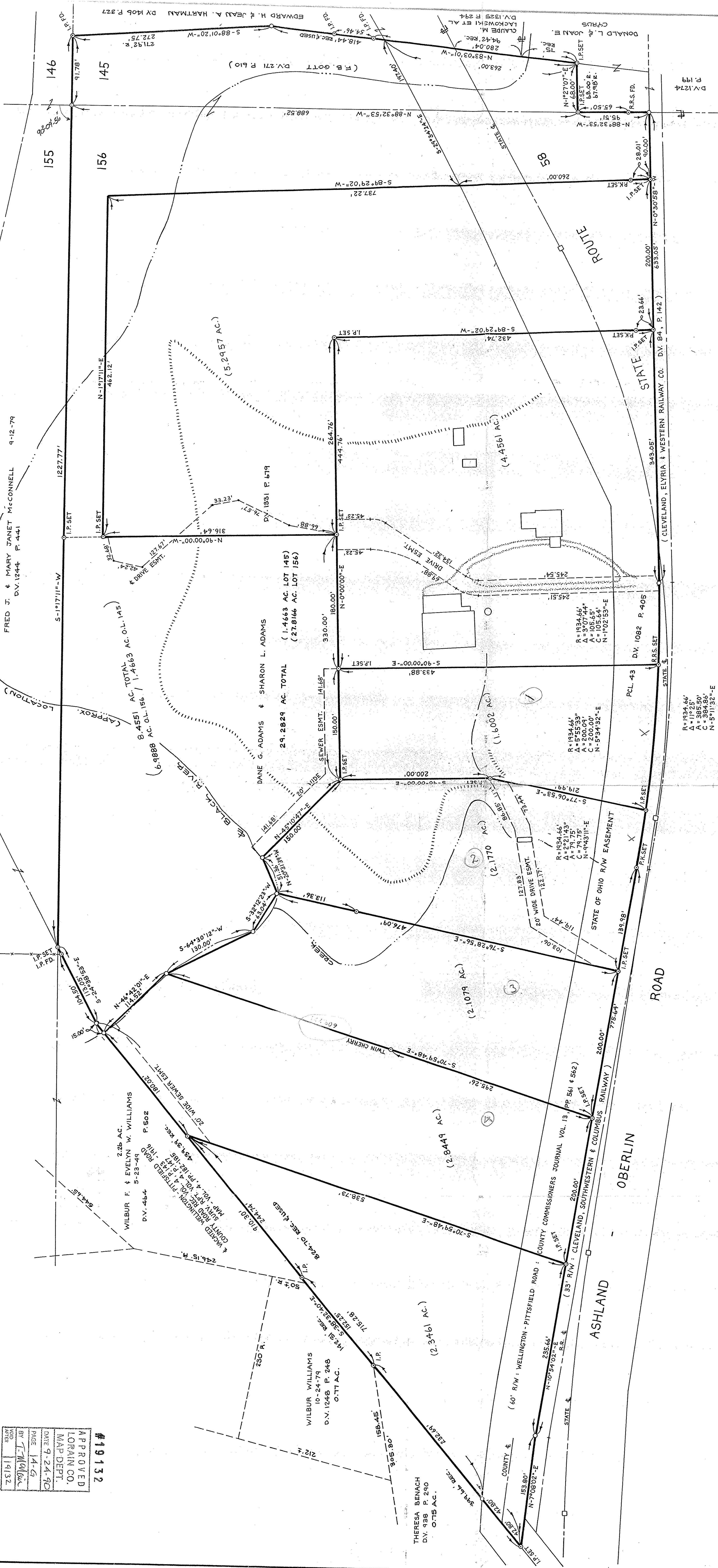


#19132
 APPROVED
 LORAIN CO.
 MAP DEPT.
 DATE 9-24-90
 PAGE 14-G
 BY Carolyn Francis
 WORD 19132



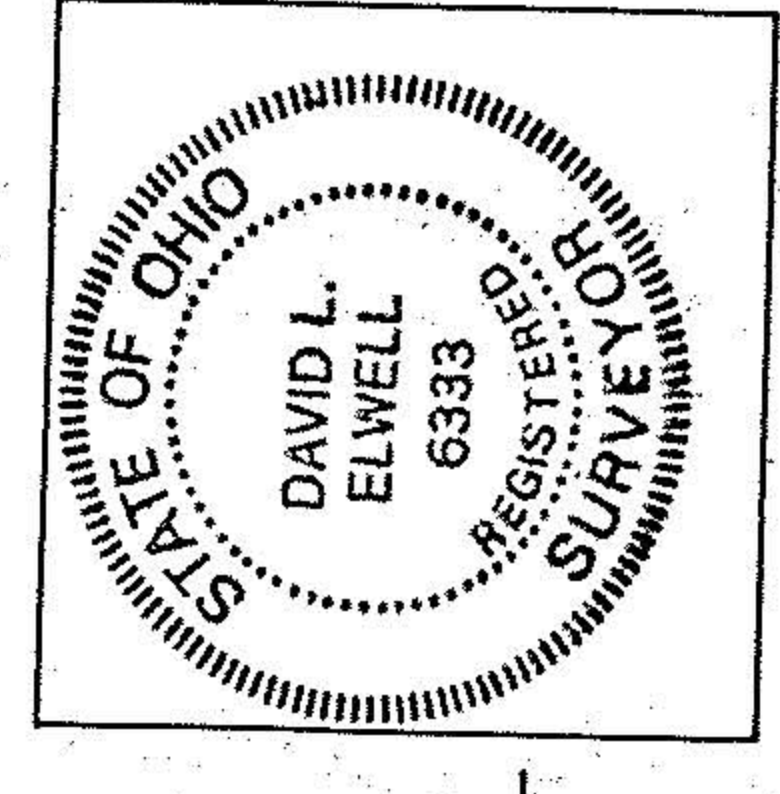
14-00-156-000

#19132
 APPROVED
 LORAIN CO.
 MAP DEPT.
 DATE 9-18-90
 PAGE 14-G
 BY CAROLYN FRANCIS
 WORD # 19132

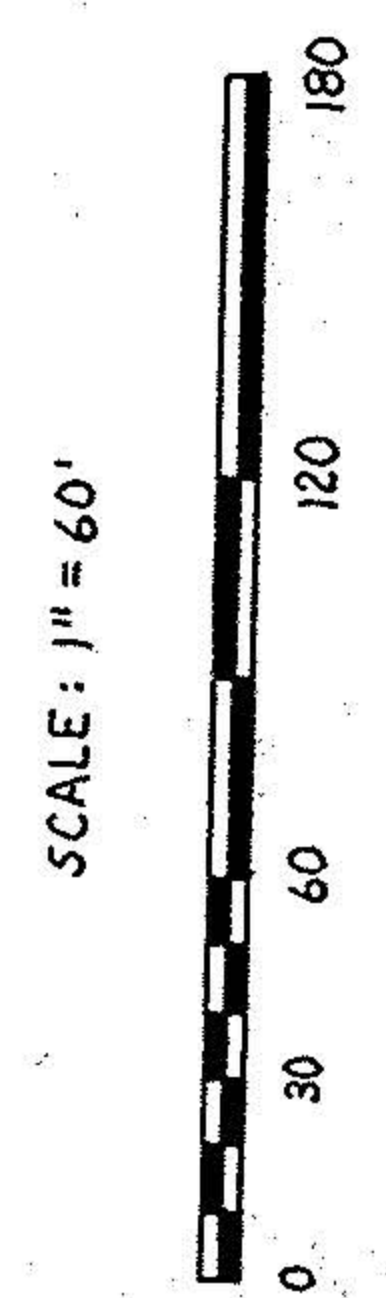
BOUNDARY SURVEY

PART OF
 PITTSFIELD TOWNSHIP ORIGINAL LOTS 145 & 156
 TOWNSHIP of PITTSFIELD • COUNTY of LORAIN • STATE of OHIO

PREPARED BY:
 KS ASSOCIATES INC.
 ENGINEERS SURVEYORS



DAVID L. ELWELL REG. SURVEYOR NO. 6333
 JUNE 25, 1990
 REV. JULY 30, 1990



R=1934.66'
 A=119°25'
 C=385.50'
 N=5°11'32"-E

R=1934.66'
 A=3°07'44"
 C=200.00'
 N=5°54'32"-E

R=1934.66'
 A=2°21'43"
 C=74.75'
 N=9°43'11"-E

THERESA BENACH
 D.V. 938 P. 240
 0-77 AC.

WILBUR WILLIAMS
 D.V. 1248 P. 248
 0-77 AC.

WILBUR F. & EVELYN W. WILLIAMS
 5-23-49
 P. 502

FRED J. & MARY JANET McCONNELL
 D.V. 1244 P. 441
 9-12-79

DANE G. ADAMS & SHARON L. ADAMS
 D.V. 1831 P. 519

29.2829 AC. TOTAL
 (1.4663 AC. LOT 145)
 (27.8166 AC. LOT 156)

8.4551 AC. TOTAL AC. O.L. 145
 1.4663 AC. TOTAL AC. O.L. 145

5.2357 AC.

4.4561 AC.

1.1002 AC.

2.1770 AC.

2.8449 AC.

2.3461 AC.

2.25 AC.

2.25 AC.

2.25 AC.

2.25 AC.

2.25 AC.

2.25 AC.

2.25 AC.

2.25 AC.

2.25 AC.

2.25 AC.

2.25 AC.

2.25 AC.

2.25 AC.

2.25 AC.

2.25 AC.

2.25 AC.

2.25 AC.

2.25 AC.

2.25 AC.

2.25 AC.

2.25 AC.

2.25 AC.

2.25 AC.

2.25 AC.

2.25 AC.

2.25 AC.

2.25 AC.

2.25 AC.

2.25 AC.

2.25 AC.

2.25 AC.

2.25 AC.

2.25 AC.

2.25 AC.

2.25 AC.

2.25 AC.

2.25 AC.

2.25 AC.

2.25 AC.

2.25 AC.

2.25 AC.

2.25 AC.

2.25 AC.

2.25 AC.

2.25 AC.

2.25 AC.

2.25 AC.

2.25 AC.

2.25 AC.

2.25 AC.

2.25 AC.

2.25 AC.

2.25 AC.

2.25 AC.

2.25 AC.

2.25 AC.

2.25 AC.

2.25 AC.

2.25 AC.

2.25 AC.

2.25 AC.

2.25 AC.

2.25 AC.

2.25 AC.

2.25 AC.

2.25 AC.

2.25 AC.

2.25 AC.

2.25 AC.

2.25 AC.

2.25 AC.

2.25 AC.

2.25 AC.

2.25 AC.

2.25 AC.

2.25 AC.

2.25 AC.

2.25 AC.

2.25 AC.

2.25 AC.

2.25 AC.

2.25 AC.

2.25 AC.

2.25 AC.

2.25 AC.

2.25 AC.

2.25 AC.

2.25 AC.

2.25 AC.

2.25 AC.

2.25 AC.

2.25 AC.

2.25 AC.