

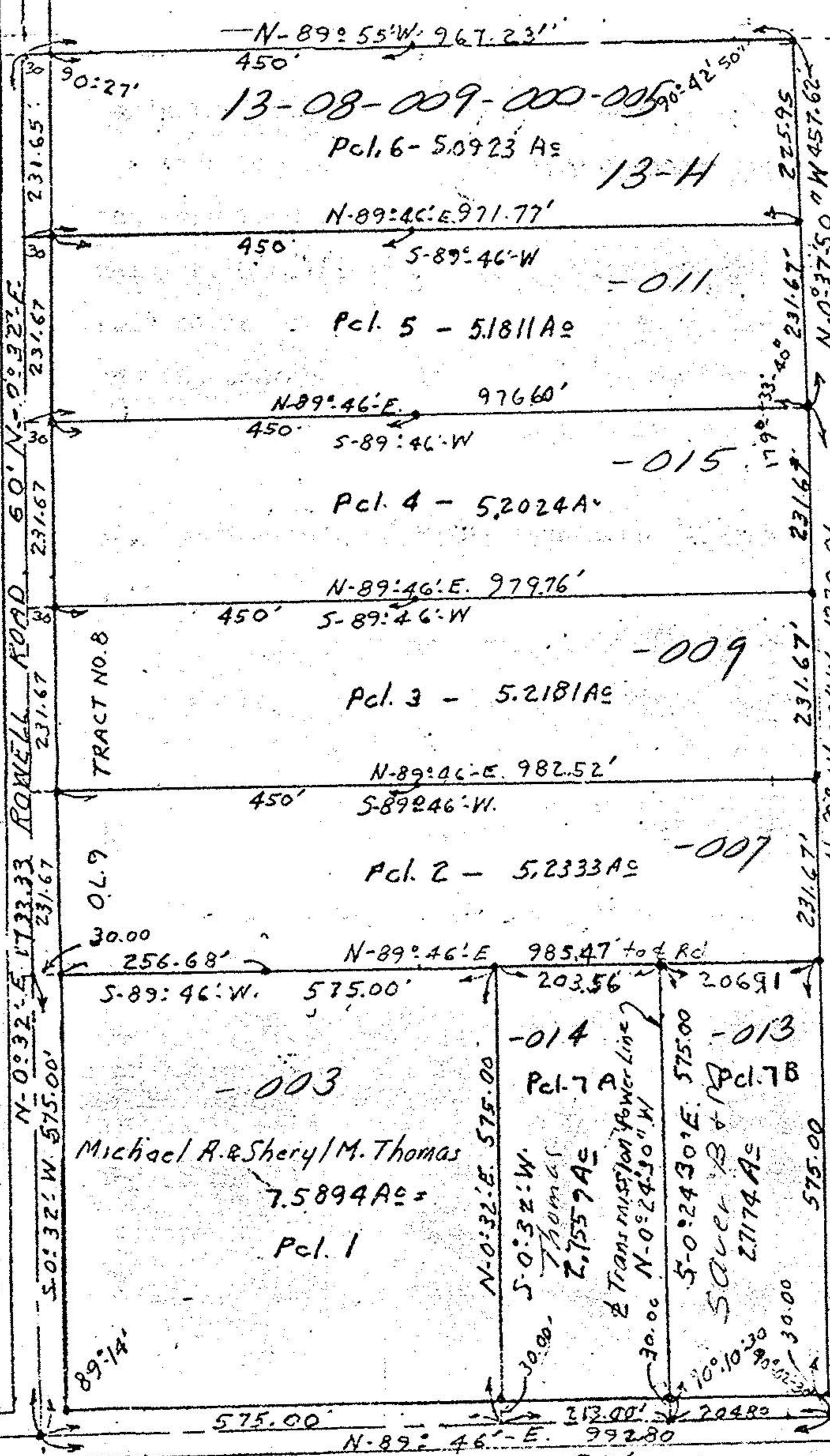
1.44
TR-9

O.L. 45 TR. 9

13-08-009-000

OL. 8 TRACT NO. 8

13-H



OL. 8 TR. 8

OL. 9

OL. 9

OL. 9

OL. 9 TRACT 8

CAMDEN TWP.
PITTSFIELD TWP.

N-89°55'W 967.23'

13-08-009-000-005

Pct. 6 - 5.0923 Ac

13-H

N-89°46'E 971.77'

Pct. 5 - 5.1811 Ac

N-89°46'E 976.60'

Pct. 4 - 5.2024 Ac

N-89°46'E 979.76'

Pct. 3 - 5.2181 Ac

N-89°46'E 982.52'

Pct. 2 - 5.2333 Ac

N-89°46'E 985.47' to Rd

Michael A. & Sheryl M. Thomas

7.5894 Ac

Pct. 1

-014

Pct. 7 A

N-0°32'E 575.00'

S-0°32'W 575.00'

Thomas

2.7557 Ac

Transmission Power Line

5-0°24'30"E 575.00'

S-0°24'30'W 575.00'

2.7174 Ac

-013

Pct. 7 B

30.00

30.00

30.00

30.00

30.00

30.00

30.00

30.00

Lewis R. & Jeannette I. Kolb
D. Volume 531 Pg. 81 Nov. 21-1951

MAP OF SURVEY OF 7.5894 ACRES
FOR FRANKLIN B. & ROSS J. McROBERTS
PART OF ORIGINAL LOT 9 TRACT NO. 8
CAMDEN TOWNSHIP - LORAIN COUNTY OHIO
Scale 1" = 200' MAY-10-1972 - 143431-1972

575.00' N-89°46'E 992.80'

AUSTIN ROAD 60'

60' N-0°32'E

60' N-0°32'E

60' N-0°32'E

60' N-0°32'E

60' N-0°32'E

231.67'

231.67'

231.67'

231.67'

231.67'

231.65'

231.67'

231.67'

231.67'

231.67'

231.67'

231.67'

231.67'

231.67'

231.67'

231.67'

231.67'

231.67'

231.67'

231.67'

231.67'

231.67'

231.67'

231.67'

231.67'

231.67'

231.67'

231.67'

231.67'

231.67'

231.67'

231.67'

231.67'

231.67'

231.67'

231.67'

231.67'

231.67'

231.67'

231.67'

231.67'

231.67'

231.67'

231.67'

231.67'

231.67'

231.67'

231.67'

231.67'

231.67'

231.67'

231.67'

231.67'

231.67'

231.67'

231.67'

231.67'

231.67'

231.67'

231.67'

231.67'

231.67'

231.67'

231.67'

231.67'

231.67'

231.67'

231.67'

231.67'

231.67'

231.67'

231.67'

231.67'

231.67'

231.67'

231.67'

231.67'

231.67'

231.67'

231.67'

231.67'

231.67'

231.67'

231.67'

231.67'

231.67'

231.67'

231.67'

231.67'

231.67'

231.67'

231.67'

231.67'

231.67'

231.67'

231.67'

231.67'

231.67'

231.67'

231.67'

231.67'

231.67'

231.67'

231.67'

231.67'

231.67'

231.67'

231.67'

231.67'

231.67'

231.67'

231.67'

231.67'

231.67'

231.67'

231.67'

231.67'

231.67'

231.67'

231.67'

231.67'

231.67'

231.67'

231.67'

231.67'

231.67'

231.67'

231.67'

231.67'

231.67'

231.67'

231.67'

231.67'

231.67'

231.67'

231.67'

231.67'

231.67'

231.67'

231.67'

231.67'

231.67'

231.67'

231.67'

231.67'

231.67'

231.67'

231.67'

231.67'

231.67'

231.67'

231.67'

231.67'

231.67'

231.67'

231.67'

231.67'

231.67'

231.67'

231.67'

231.67'

231.67'

231.67'

231.67'

231.67'

231.67'

231.67'

231.67'

231.67'

231.67'

231.67'

231.67'

231.67'

231.67'

231.67'

231.67'

231.67'

231.67'

231.67'

231.67'

231.67'

231.67'

231.67'

231.67'

231.67'

231.67'

231.67'

231.67'

231.67'

231.67'

231.67'

231.67'

231.67'

231.67'

231.67'

231.67'

231.67'

231.67'

231.67'

231.67'

231.67'

231.67'

231.67'

231.67'

231.67'

231.67'

231.67'

231.67'

231.67'

231.67'

231.67'

231.67'

231.67'

231.67'

231.67'

231.67'

231.67'

231.67'

231.67'

231.67'

231.67'

231.67'

231.67'

231.67'

231.67'

231.67'

231.67'

231.67'

231.67'

231.67'

231.67'

231.67'

231.67'

231.67'

231.67'

231.67'

231.67'

231.67'

231.67'