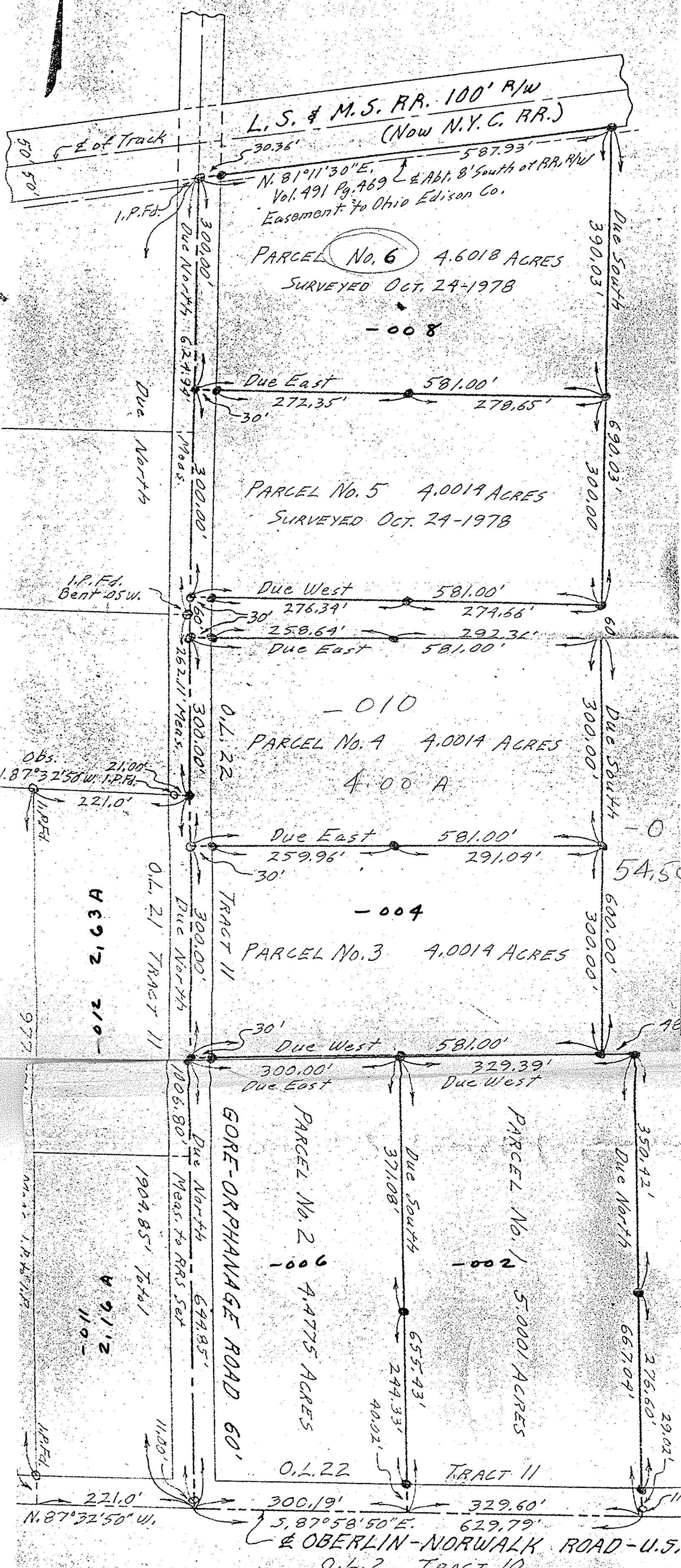


U indicates railroad spike set in pavement unless otherwise designated



L.S. & M.S. RR. 100' R/W
(Now N.Y.C. RR.)

N. 81°11'30"E. 587.93'
Vol. 491 Pg. 469 & Abt. 8' South of RR. R/W
Easement to Ohio Edison Co.

PARCEL No. 6 4.6018 ACRES
SURVEYED OCT. 24-1978

- 008

Due East 581.00'
272.35' 278.65'

PARCEL No. 5 4.0014 ACRES
SURVEYED OCT. 24-1978

Due West 581.00'
276.39' 274.66'

Due East 581.00'
258.64' 292.36'

PARCEL No. 4 4.0014 ACRES
4.00 A

Due East 581.00'
259.96' 291.04'

PARCEL No. 3 4.0014 ACRES

Due West 581.00'
300.00' Due East 329.39'

PARCEL No. 2 4.4775 ACRES

PARCEL No. 1 5.0001 ACRES

GORE-ORPHANAGE ROAD 60'

TRACT II

Due East 300.19' 329.60'
5.87°58'50"E. 629.79'

OBERLIN-NORWALK ROAD - U.S.
O.L. 2 TRACT 10

AC 210

AC 210

TRACT II

TRACT II

TRACT II

TRACT II

N. 87°32'50" W.

N. 87°32'50" W.

N. 87°32'50" W.