

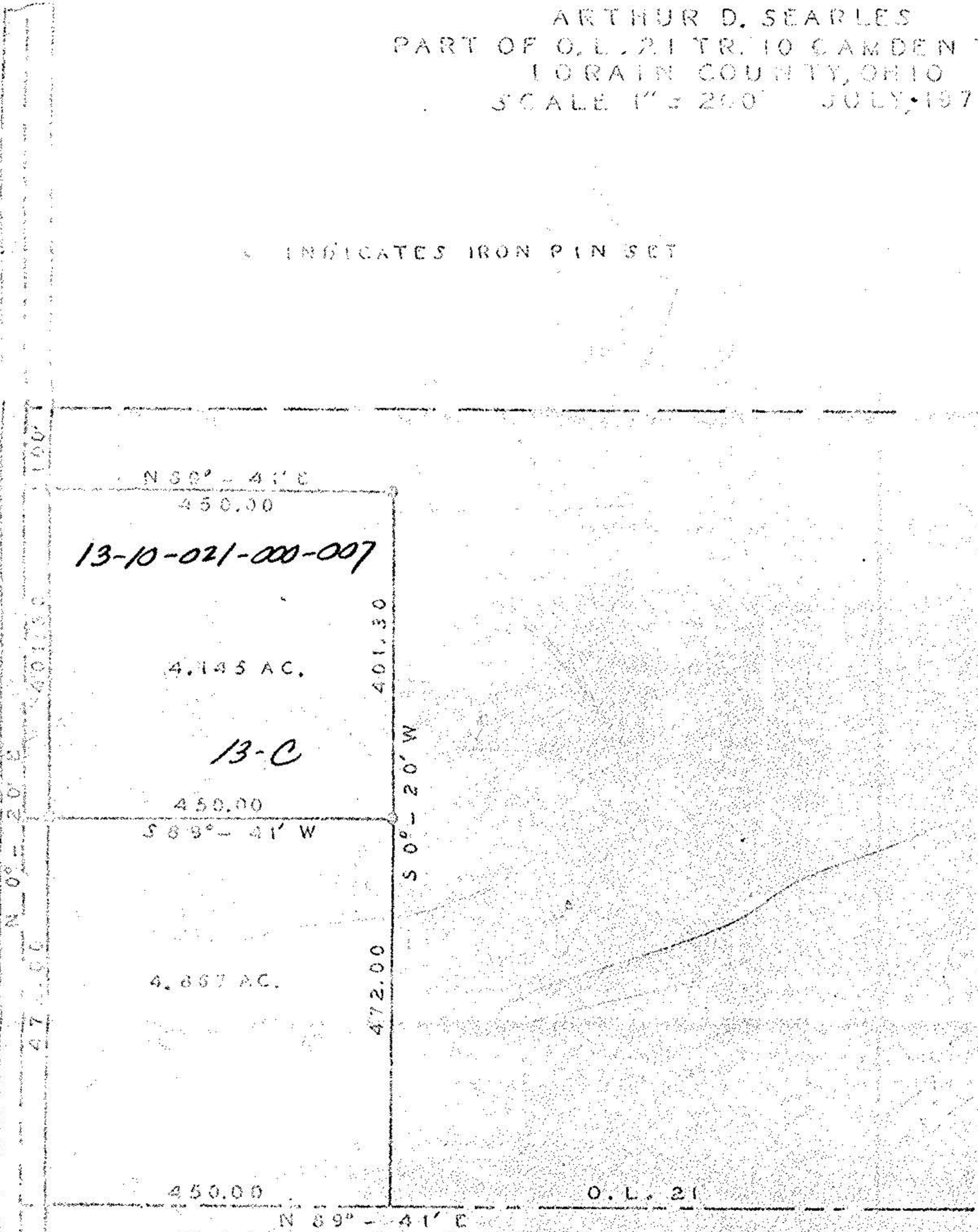
13-10-021-000

13-10-021
13-C

MAP OF SURVEY
ARTHUR D. SEARLES
PART OF O.L. 21 TR. 10 CAMDEN TWP.
LORAIN COUNTY, OHIO
SCALE 1" = 200' JULY, 1975

INDICATES IRON PIN SET

ASHLAND - KIPTON RD. S.R. 511



13-10-021-000-007

4.145 AC.

13-C

450.00

S 89° - 41' W

4.867 AC.

450.00

N 89° - 41' E

O.L. 21

JOB NO. 70-75-15

WILLIAM L. FOX, REG. SURVEYOR
NO. 5878

Neff & Associates, Inc.