

#14816

13 13 11 11

16.5 511
 RELOCATED
 ROUTE 20
 S 86° 24' E
 142.5163

#14816

APPROVED
 LORAIN CO.
 MAP DEPT.

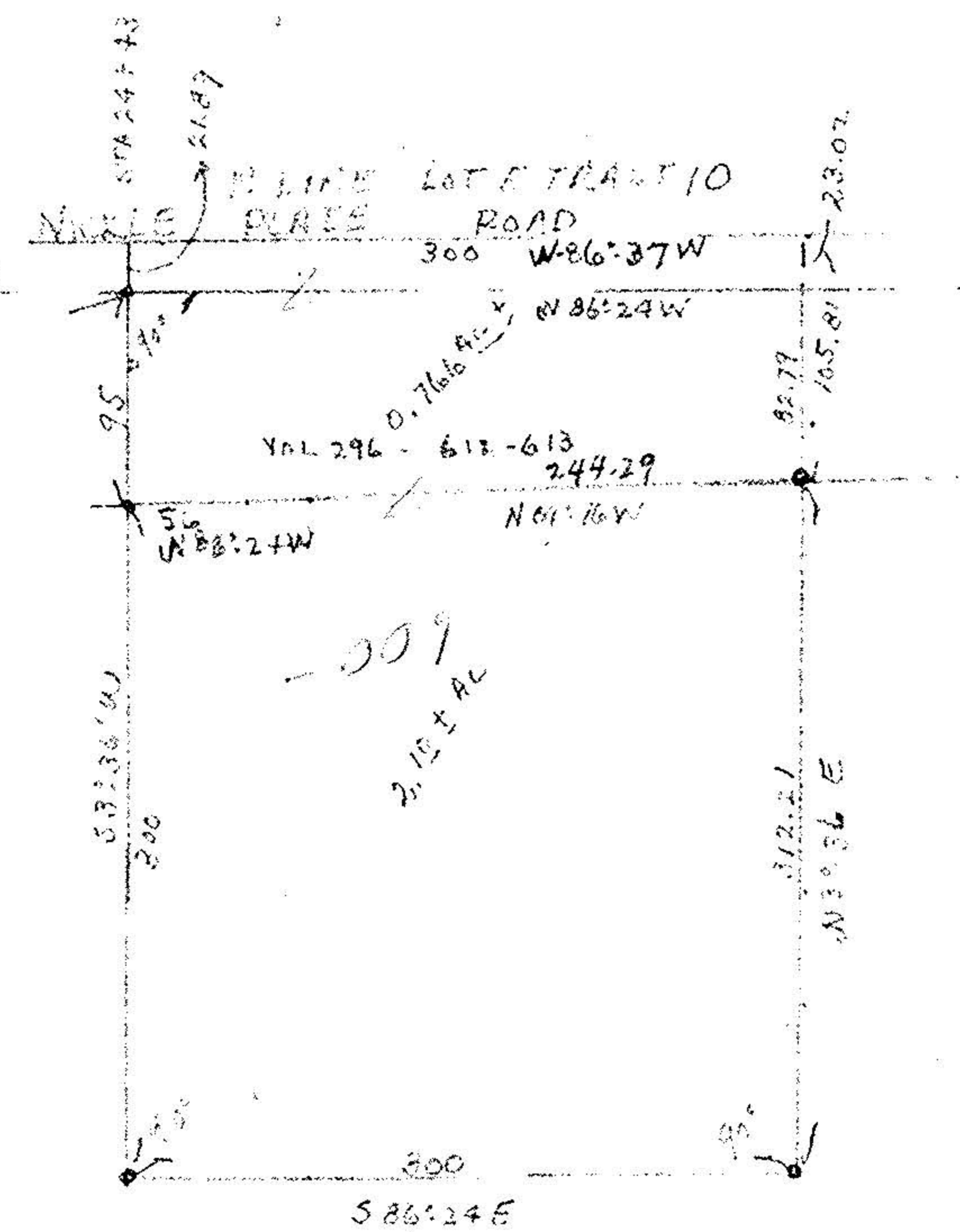
DATE 9-13-82

PAGE 13-C

BY C. Francis

VOID AFTER

VOID AFTER



Map of Part of Lot 5 Tract 10 Camden Twp. Lorain Co. Ohio
 Scale 1" = 200' June 18, 1982
 By Arnold F. Koeppe Reg. Surveyor No. 4306

