

Map of Part of Lot No. 11 Tract No. 10 Camden Twp. Lorain Co. Ohio
 May 15, 1981 By Arnold P. Koepp Reg. Surveyor
 Map from deed records. Scale 1" = 400'

13-10-011-000

13-D

#14259

13-10-011-000-

- 002

63.05A,

31.00

32.05A.

1773.00

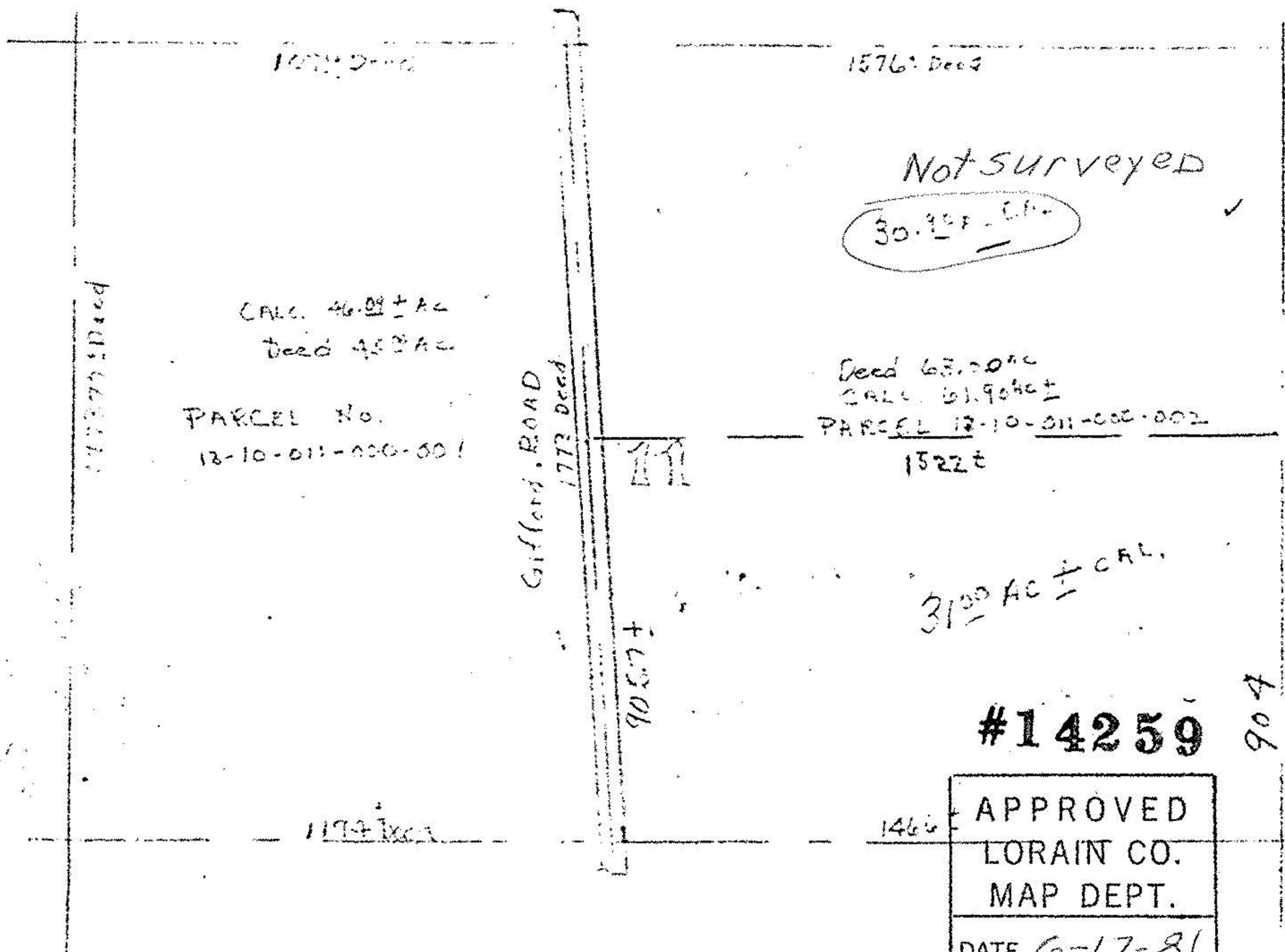
904.00

869.00

1773.70

905.70

868.100



PARCEL No.
13-10-011-000-001

Deed 63.00± AC
 CALC. 61.90± AC
 PARCEL 13-10-011-000-002
 1522±

31.00 AC ± CALC.

#14259

APPROVED	
LORAIN CO.	
MAP DEPT.	
DATE 6-17-81	
PAGE 13-D	
BY <i>Arnold P. Koepp</i>	
VOID	14259
AFTER	

Total Acreage Deed 107.99
 " Average CALC 107.99

13-D #14259