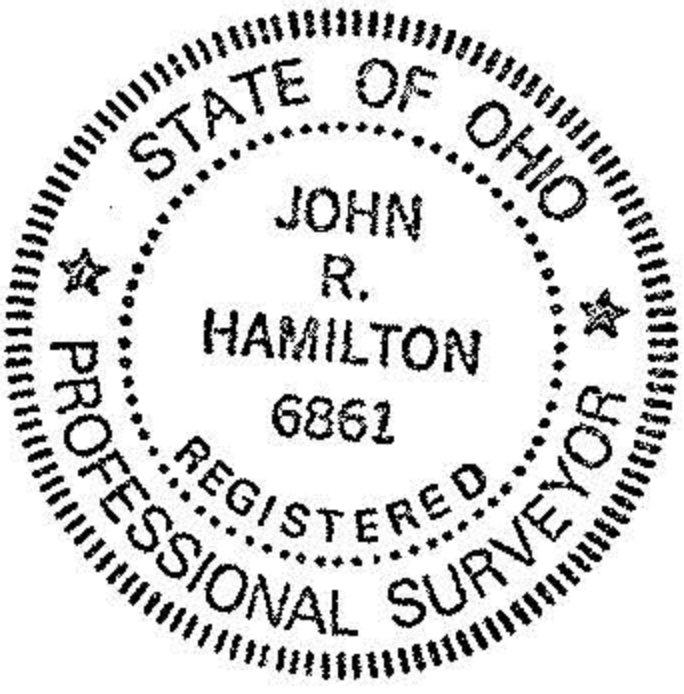
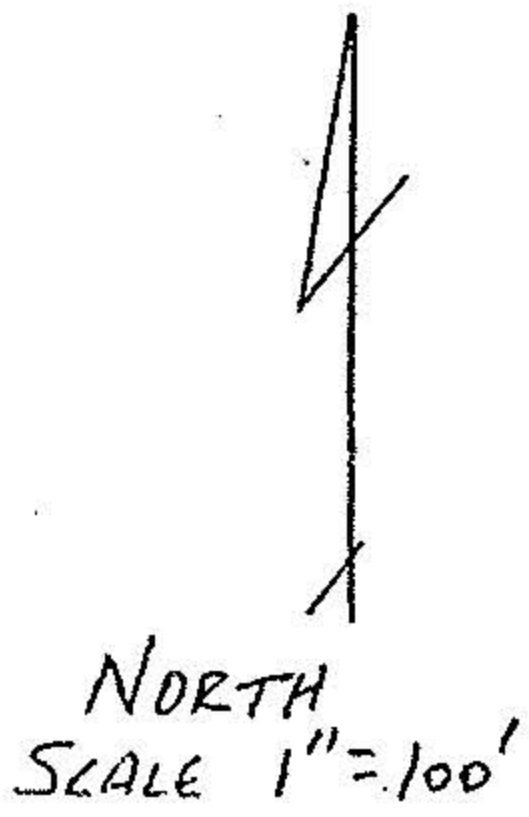


MAP OF PARCELS "A" + "B" FOR W. SWIGERS  
 D.L.#13-TRACT #9 - CAMDEN TWP.  
 OCT. 1988 SCALE 1"=100'

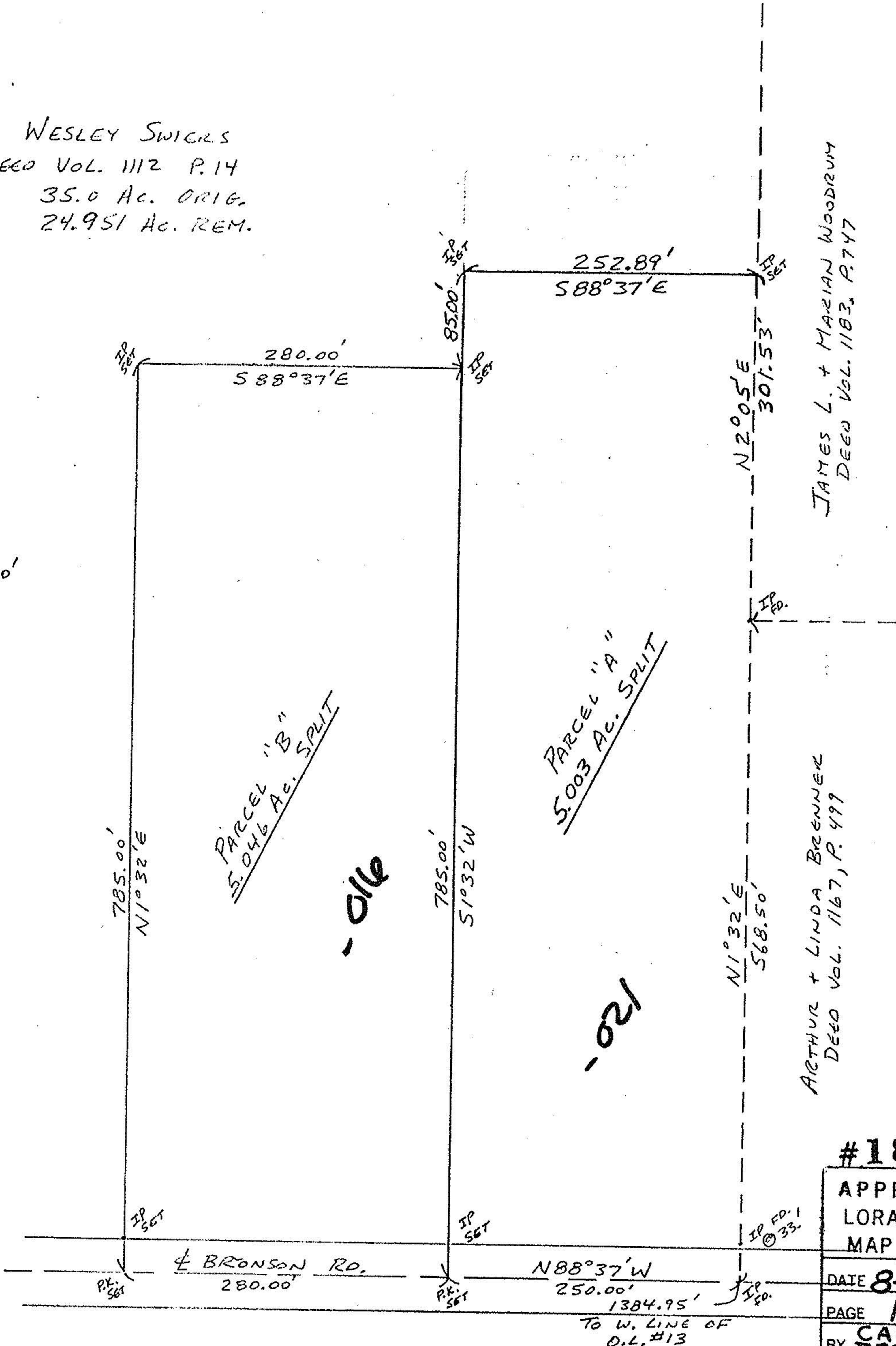
JOHN R. HAMILTON  
 REG. SURV. #6861



WESLEY SWIGERS  
 DEED VOL. 1112 P. 14  
 35.0 AC. ORIG.  
 24.951 AC. REM.



D.L.#13-TRACT #9  
 CAMDEN TWP.



#18579

APPROVED	LORAIN CO. MAP DEPT.
DATE	8-14-89
PAGE	13-G
BY	CAROLYN FRANCIS
VOID AFTER	#18579

13-09-013-000