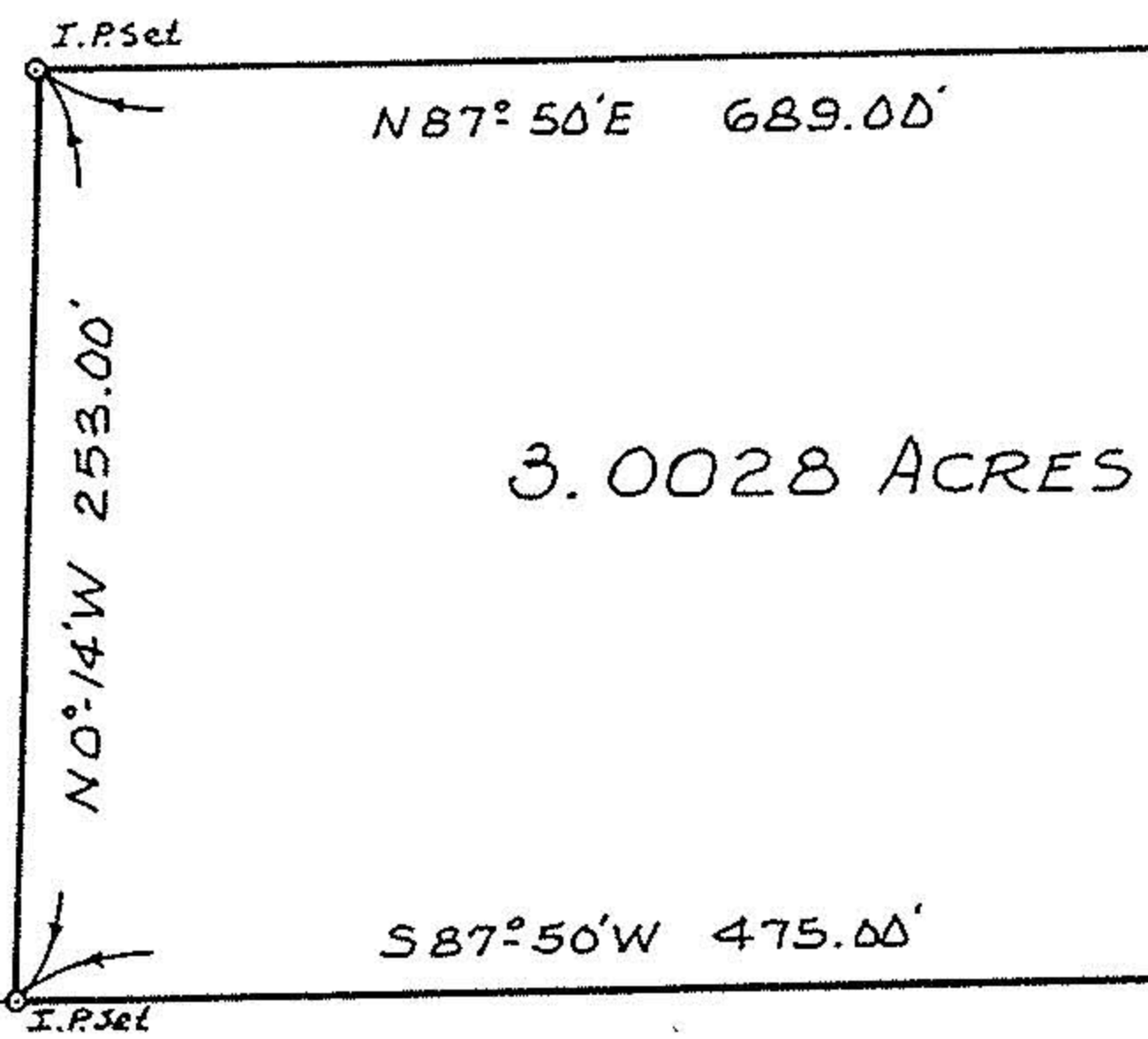


13-C

#19110

NORTH 13-11-007-000-

-009 21.62 A
Dan Dudley Reed
V. 1220, P. 62
21.62 Ac.



-004 1.00 A.
James A. &
Karen L.
Widdowson
O.R.V. 164, P. 79
1.00 Ac.

-011 16.31 A.
John & Lavone Cherry Jr.
Y. 381, P. 320
89.21 Ac.

-007
Dane L. Wolfe
O.R.V. 113, P. 400
1.26 Ac.

-010
Dane Wolfe
O.R.V. 245, P. 908
0.713 Ac.

Assumed Meridian

SCALE
1" = 100'

#19110

APPROVED
LORAIN CO.
MAP DEPT.

DATE 9-5-90

PAGE 13-C

BY CAROLYN FRANCIS

VOID AFTER # 19110

MAP OF SURVEY OF 3.0028 ACRES OF
LAND PART OF ORIG. LOT NO. 7, TRACT II,
CAMDEN TWP, LORAIN COUNTY, OHIO
Made at request of Dan Reed
By Charles P. Waryu, Reg. Surveyor No. 5029
August, 1990

Charles P. Waryu
CHARLES P. WARYU, REG. SURVEYOR NO. 5029

1:10,000