

13-A

MAP OF SURVEY FOR STEVE MATUS
CAMDEN TWP. - TRACT #11 - O. LOT # 21
JULY 1989
SCALE 1"=100'

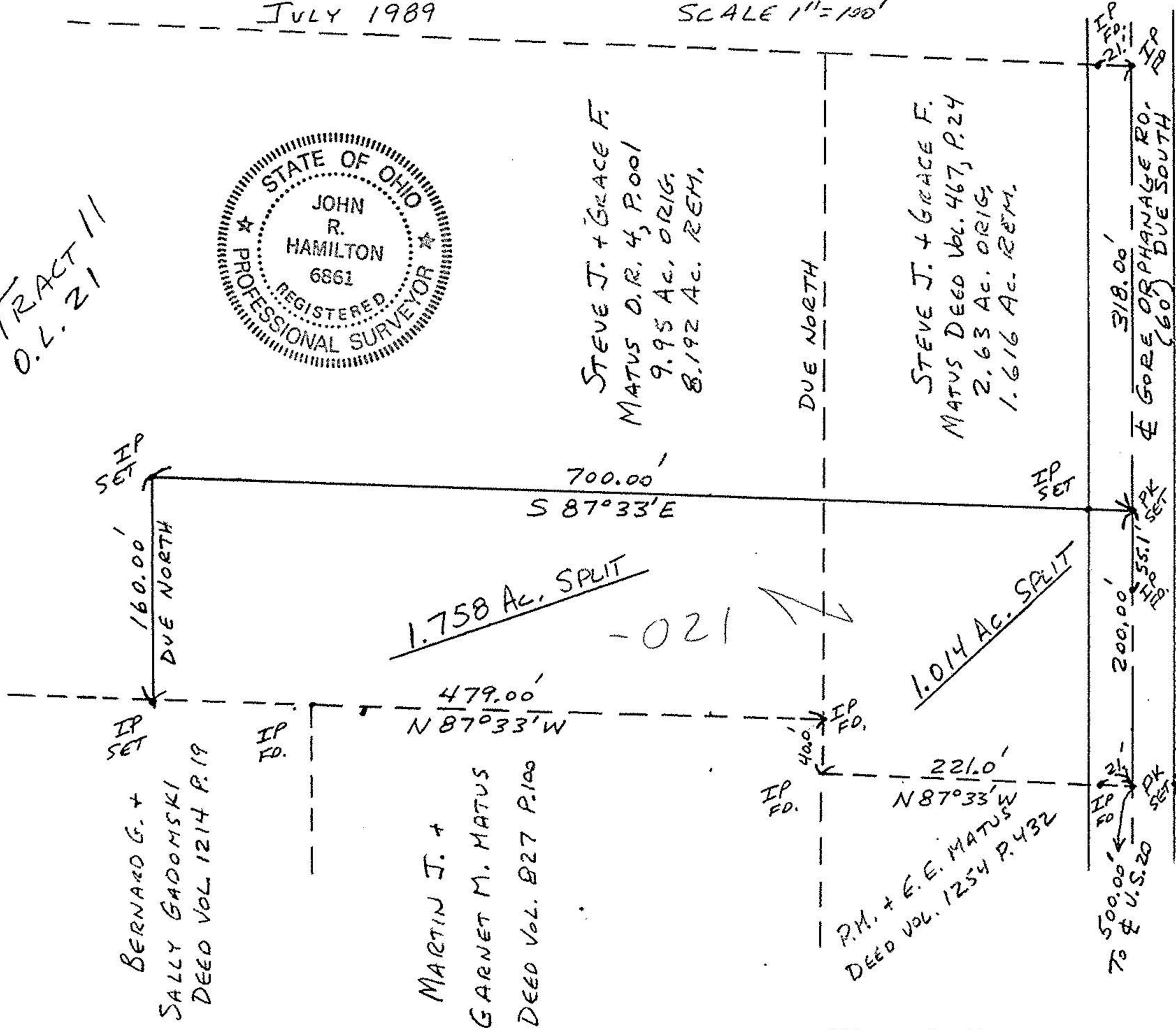
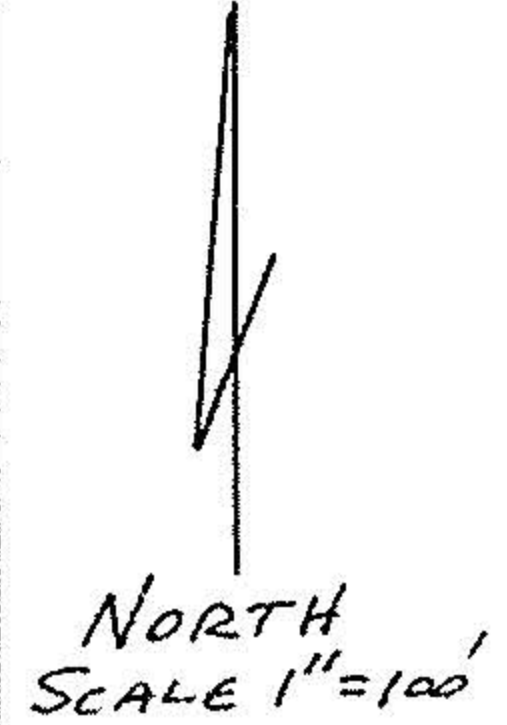
13-11-021-000-021

TRACT 11
O.L. 21



STEVE J. + GRACE F.
MATUS O.R. 4, P.001
9.95 AC. ORIG.
8.192 AC. REM.

STEVE J. + GRACE F.
MATUS DEED VOL. 467, P.24
2.63 AC. ORIG.
1.616 AC. REM.



160.00'
DUE NORTH
IP SET

700.00'
S 87° 33' E

1.758 AC. SPLIT

479.00'
N 87° 33' W

1.014 AC. SPLIT

221.0'
N 87° 33' W

200.00'
IP SET

318.00'
IP SET

IP SET
BERNARD G. +
SALLY GADOMSKI
DEED VOL. 1214 P.19

MARTIN J. +
GARNET M. MATUS
DEED VOL. B27 P.100

IP FD.
400'
IP FD.
P.H. + E.E. MATUS
DEED VOL. 1254 P.432

IP FD.
500.00'
To & U.S.20
IP SET

GORE OR PHANAGE RO.
(60') DUE SOUTH

#18562

APPROVED
LORAIN CO.
MAP DEPT.

DATE 8-4-89

PAGE 13-A

BY T-McNair

VOID AFTER 18562

JOHN R. HAMILTON
REG. SURV. #6861