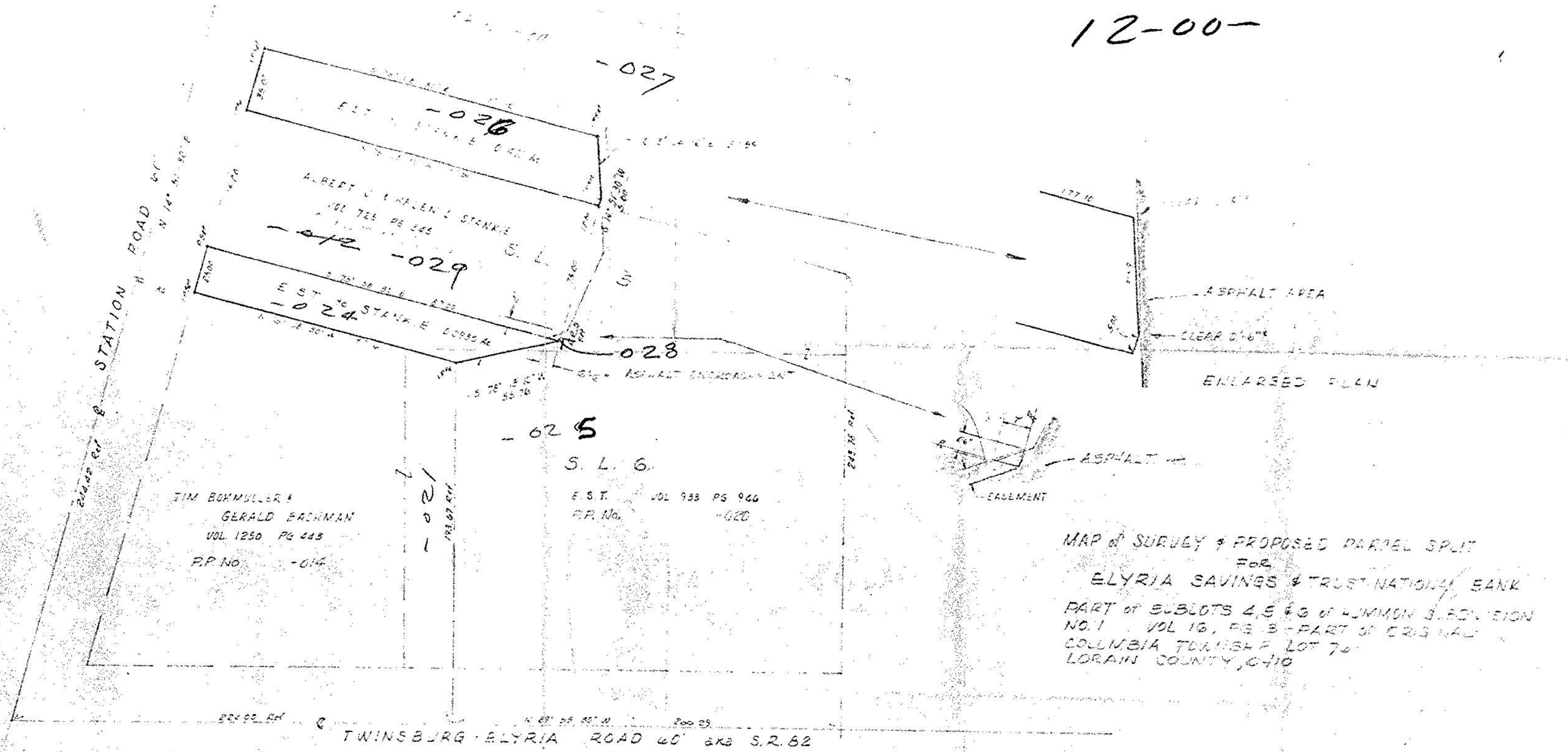


12-00-



MAP OF SURVEY & PROPOSED PARCEL SPLIT  
FOR  
ELYRIA SAVINGS & TRUST NATIONAL BANK  
PART OF SUBLOTS 4, 5 & 6 OF COMMON B. DIVISION  
NO. 1 VOL. 16, PG. 3 - PART OF ORIGINAL  
COLUMBIA TOWNSHIP LOT 70  
LORAIN COUNTY, OHIO

McGLINCHY & ASSOCIATES INC.  
REGISTERED ENGINEERS & SURVEYORS  
538 W. BROAD ST. ELYRIA, OHIO  
JAN. 18, 1930  
REV. FEB. 1950

JOB # 206109