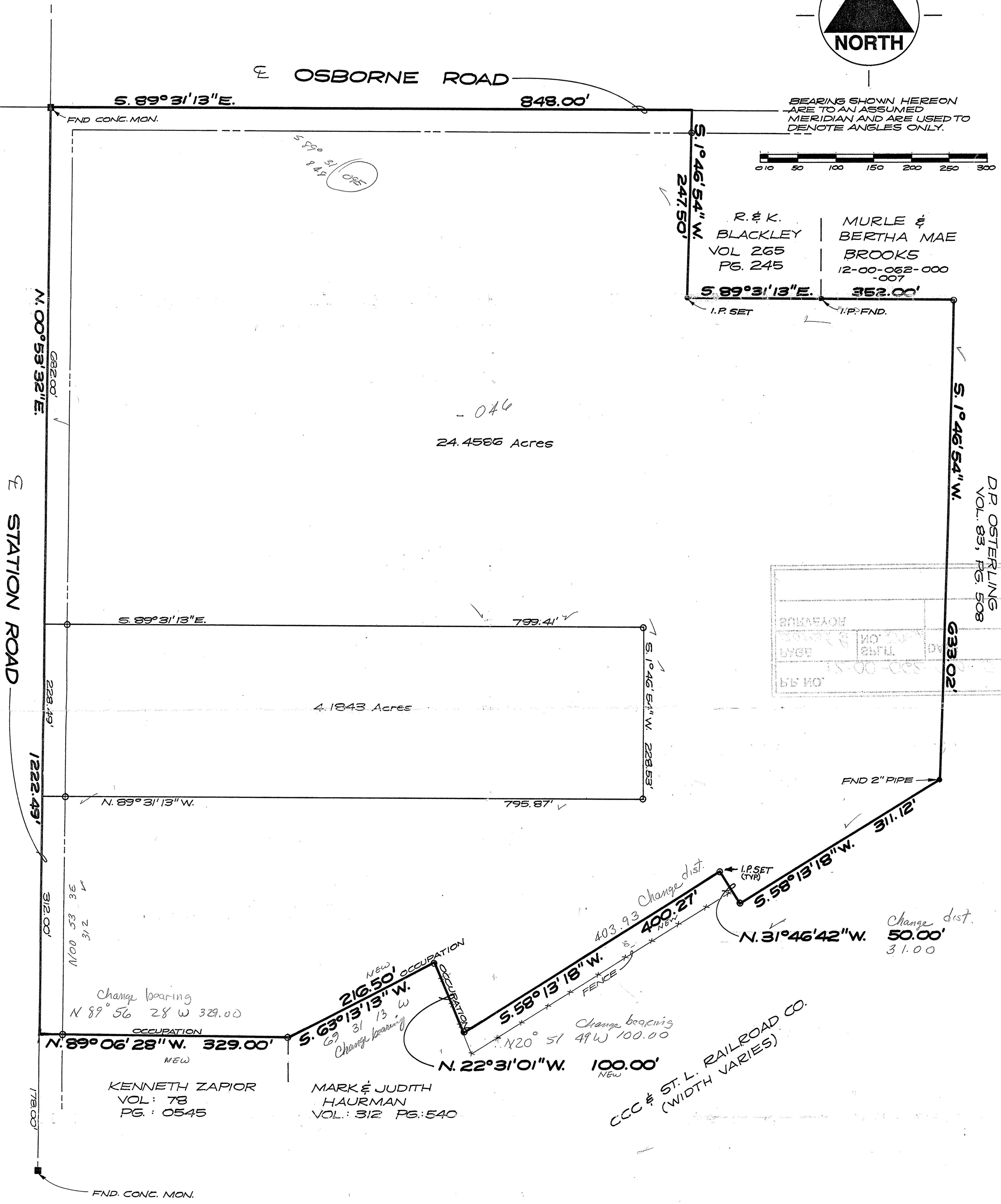




BEARING SHOWN HEREON ARE TO AN ASSUMED MERIDIAN AND ARE USED TO DENOTE ANGLES ONLY.



R. & K. BLACKLEY VOL 265 PG. 245
MURLE & BERTHA MAE BROOKS 12-00-062-000-007



DP. OSTERLING VOL. 83, PG. 508

Change bearing
N 89° 56' 28" W 329.00'
NEW

KENNETH ZAPIOR
VOL: 78
PG.: 0545

New OCCUPATION
216.50'
S. 63° 13' 13" W.
Change bearing
N 20° 51' 49" W 100.00'

MARK & JUDITH HAURMAN
VOL: 312 PG: 540

N. 22° 31' 01" W. 100.00'
NEW

Change bearing
N 20° 51' 49" W 100.00'

CCC & ST. L. RAILROAD CO.
(WIDTH VARIES)

Change dist.
50.00'
31.00'

SPLIT SURVEY DRAWING OF WALKER FARM PART OF LOT 62, COLUMBIA TWP. LORAIN COUNTY, OHIO MAY 1993

GROMLEY & ASSOCIATES
233 LIBERTY STREET
CONNEAUT, OHIO (216) 593-6321



Ralph W. Gromley
RALPH W. GROMLEY R.S.# 7431