

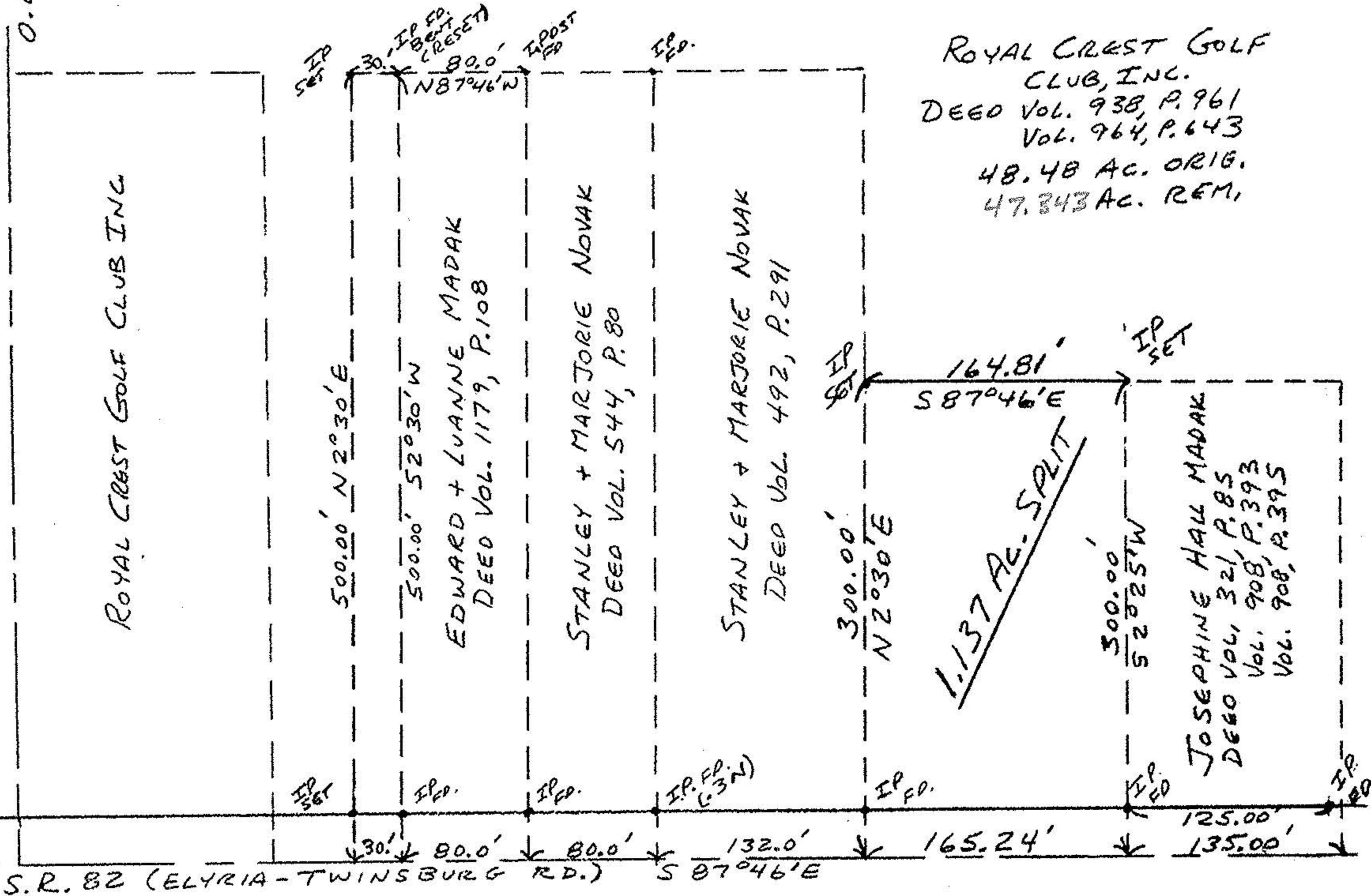
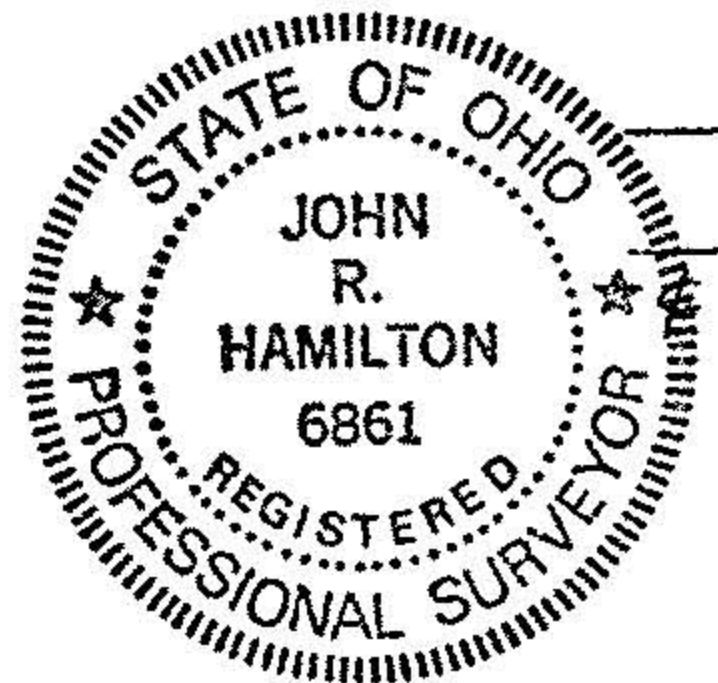
D.L. 16
D.L. 5

ROYAL CREST GOLF CLUB, INC.
DEED Vol. 938, P. 961
Vol. 964, P. 643
48.48 AC. ORIG.
47.843 AC. REM.

#18717

APPROVED
LORAIN CO. MAP DEPT.
DATE 11-8-89
PAGE 12-00-005A
BY CAROLYN FRANCIS
VOID # 18717
AFTER

NORTH
SCALE 1"=100'



MAP OF SURVEY OF 1.137 AC.
SPLIT FOR RUSS MADAK
D.L. 5 - COLUMBIA TWP.
JOHN R. HAMILTON - REG. SURV. #6861
MAY, 1988 REV. 9/89 SCALE 1"=100'