

LOT SPLIT FOR ROBERT THOMPSON

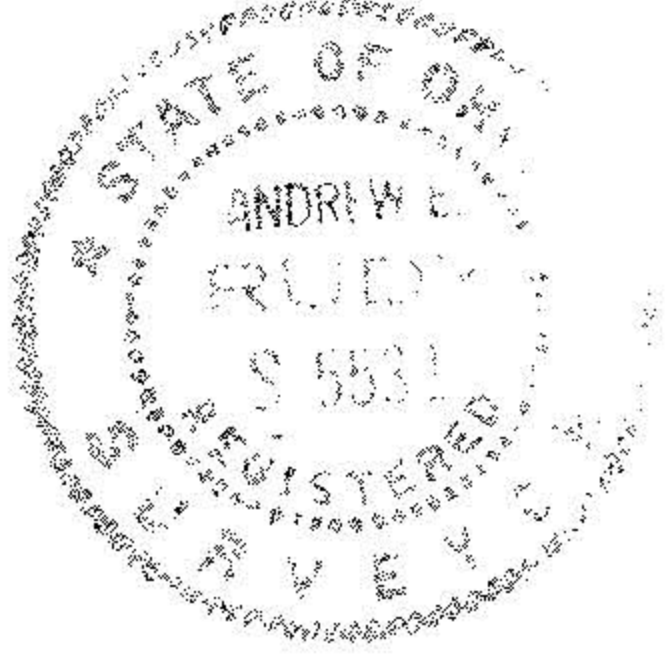
SITUATED IN THE TOWNSHIP OF COLUMBIA, COUNTY OF LORAIN AND STATE OF OHIO
BEING PART OF ORIGINAL COLUMBIA TOWNSHIP NO. 5

DIMENSIONS SHOWN ON THIS PLAT ARE EXPRESSED IN FEET AND DECIMAL PARTS THEREOF.
PERMANENT MONUMENTS ARE SET AT ALL POINTS INDICATED HEREON, ALL OF WHICH I CERTIFY
TO BE CORRECT.

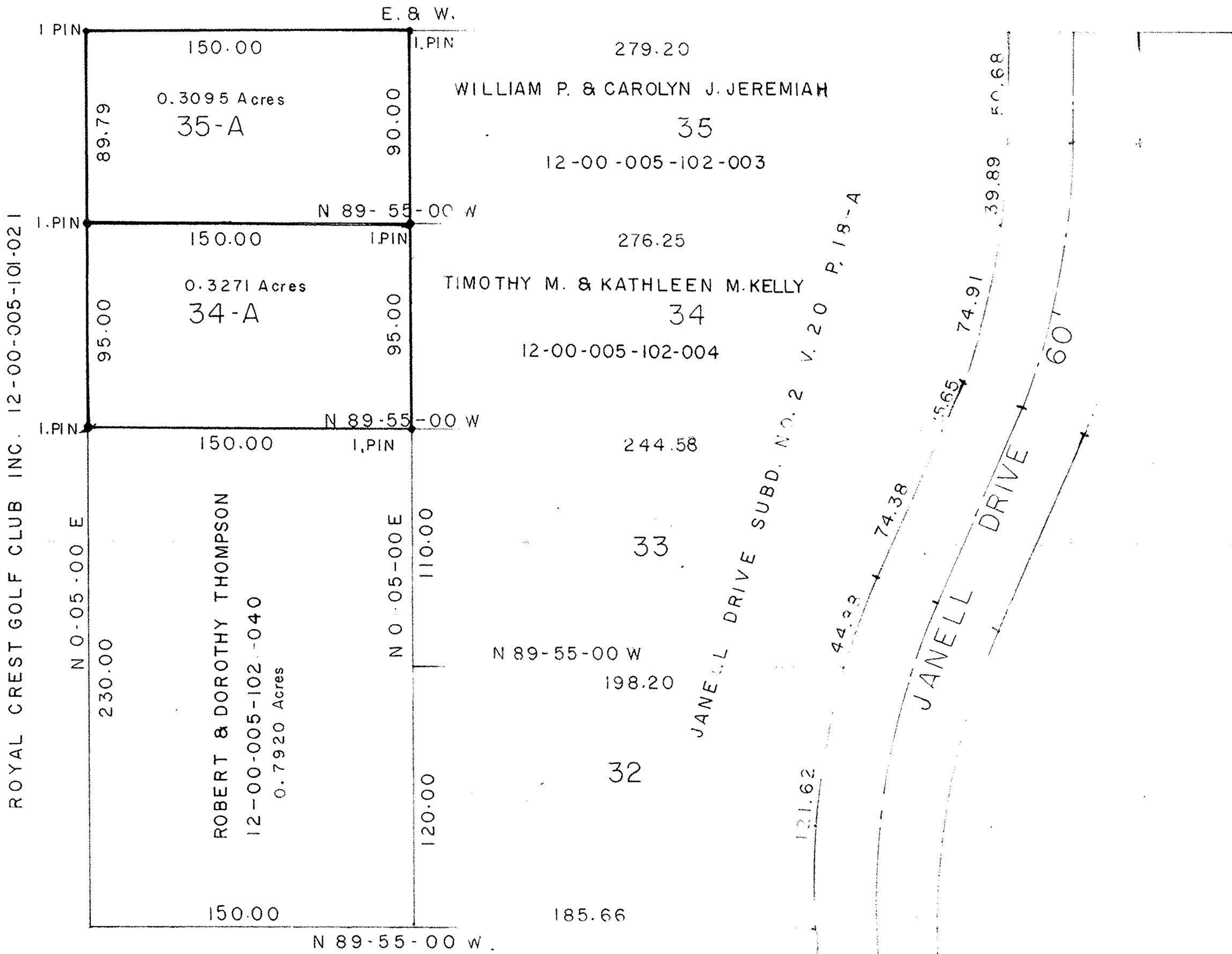
SCALE = 50' = 1"

Andrew E. Rudy
ANDREW E. RUDY REG. SURVEYOR NO. 5531

NOVEMBER, 1990



ROYAL CREST GOLF CLUB INC. 12-00-005-102-001



APPROVALS

THIS PLAT APPROVED BY THE TRUSTEES OF COLUMBIA TOWNSHIP
THIS _____ DAY OF _____ 1990

THIS PLAT APPROVED AND ACCEPTED BY THE COUNTY ENGINEER
OF LORAIN COUNTY, THIS _____ DAY OF _____ 1990

COUNTY ENGINEER

THIS PLAT APPROVED AND ACCEPTED BY COMMISSIONERS OF THE
COUNTY OF LORAIN, THIS _____ DAY OF _____ 1990
COMMISSIONERS

#19248

APPROVED
LORAIN CO.
MAP DEPT.
DATE 1-4-91
PAGE 12-00-005-B
BY CAROLYN FRANCIS
VOID AFTER #19243

12-00-005
-102-