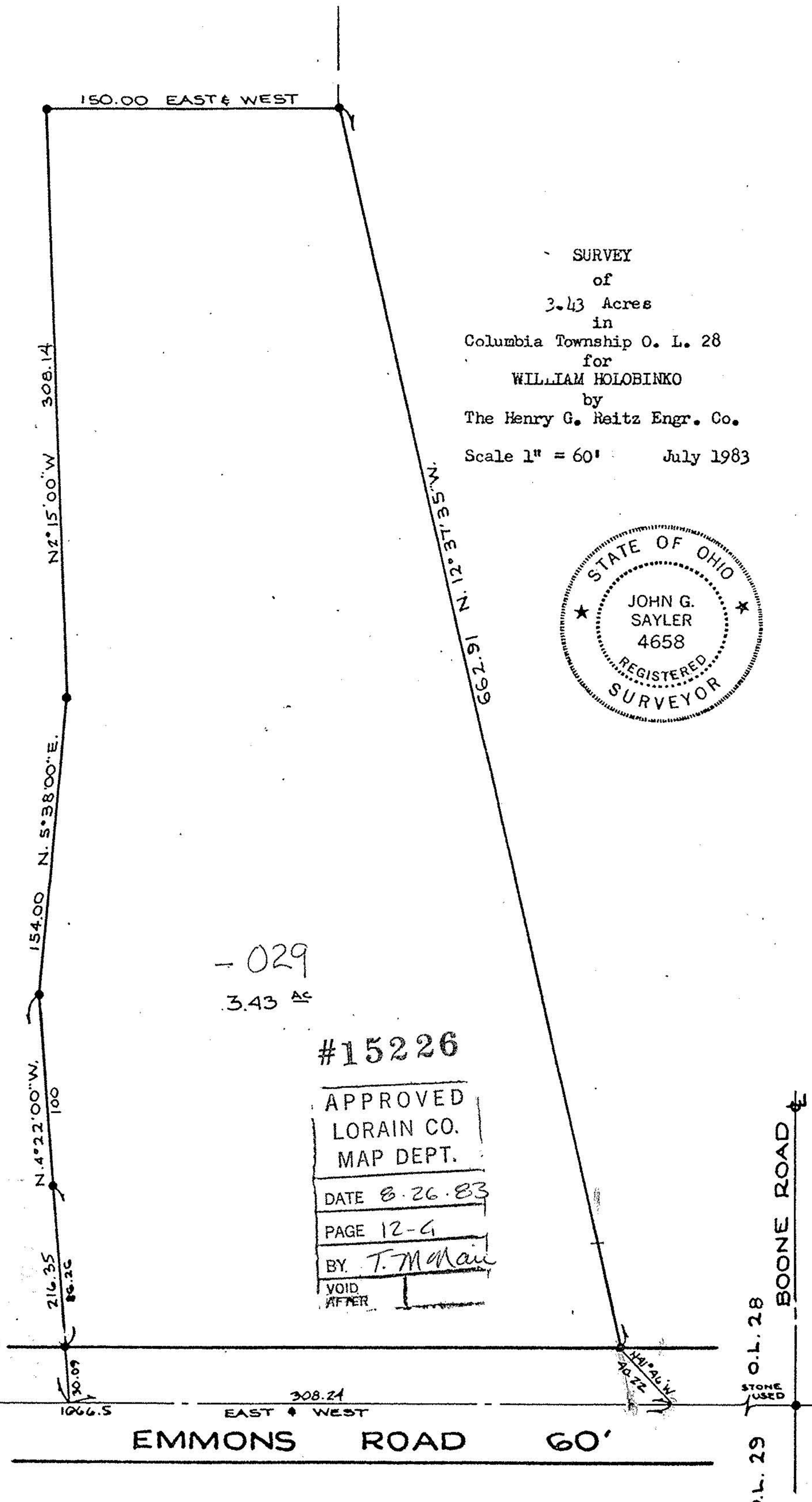


12-00-028-000 12-6

#15226

O.L. 28
O.L. 28

12-6



SURVEY
 of
 3.43 Acres
 in
 Columbia Township O. L. 28
 for
 WILLIAM HOLOBINKO
 by
 The Henry G. Reitz Engr. Co.
 Scale 1" = 60' July 1983



- 029
 3.43 AC

#15226
 APPROVED
 LORAIN CO.
 MAP DEPT.
 DATE 8.26.83
 PAGE 12-6
 BY T. McNeil
 VOID
 AFTER

1. MON. USED

STONE USED

O.L. 29
O.L. 28

BOONE ROAD

O.L. 12
O.L. 13