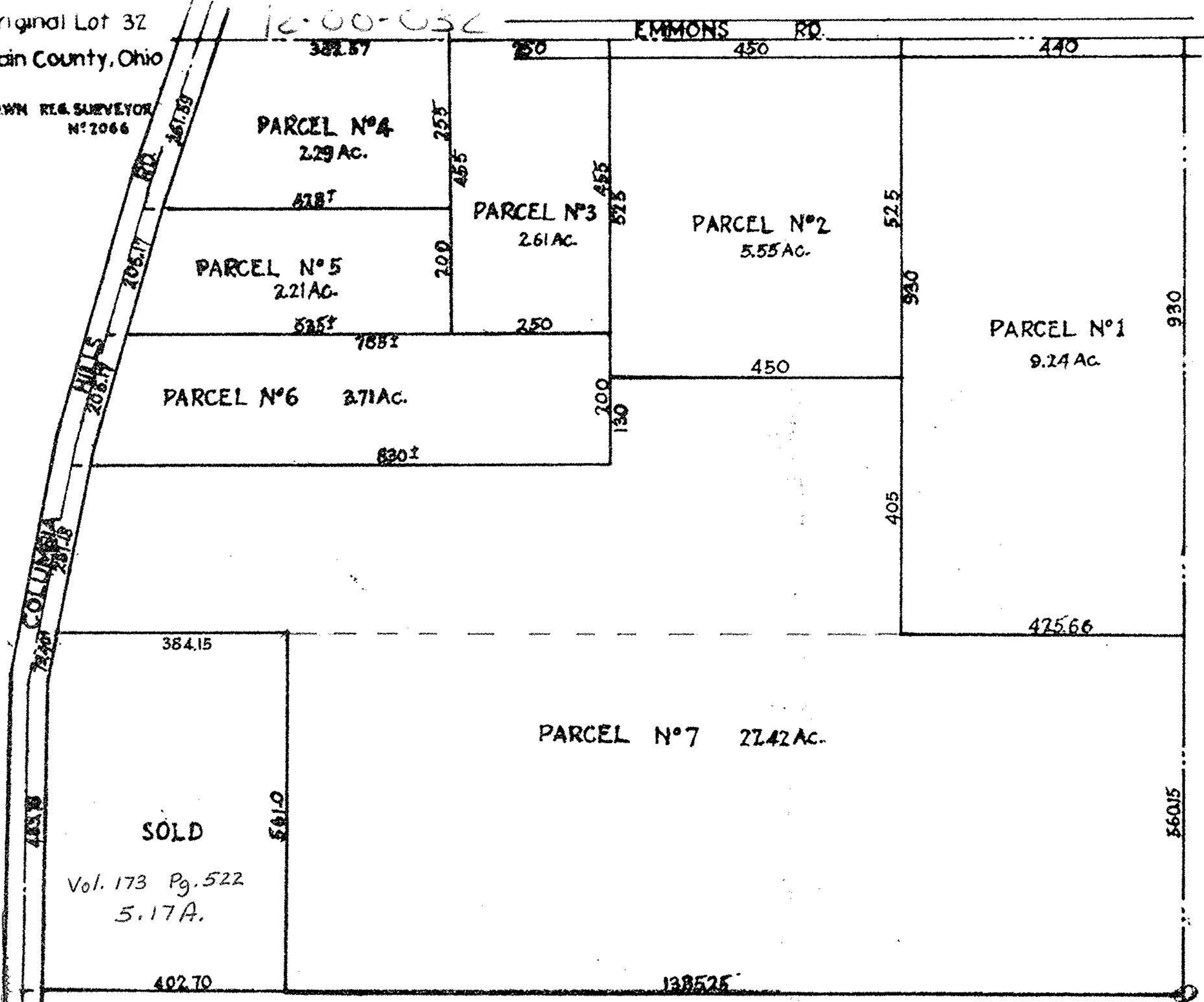


g part of Original Lot 32
 ibia Twp. Lorain County, Ohio

12-00-032

EMMONS RD.

H.A. BROWN REG. SURVEYOR
 N° 2066



34 Rods
 = 561.4

$$43560 \times 5.17 \text{ ac} = \frac{225,205.20 \text{ sq ft}}{561} = 401.43$$

$$\text{Vol. 173} \times 561 = \frac{225,202.23 \text{ sq ft}}{43560} = 5.16 \text{ A}$$