

CITY OF SHEFFIELD LAKE, OHIO  
PLANNING COMMISSION

Picns Revised 3/6/91  
Approved *[Signature]*

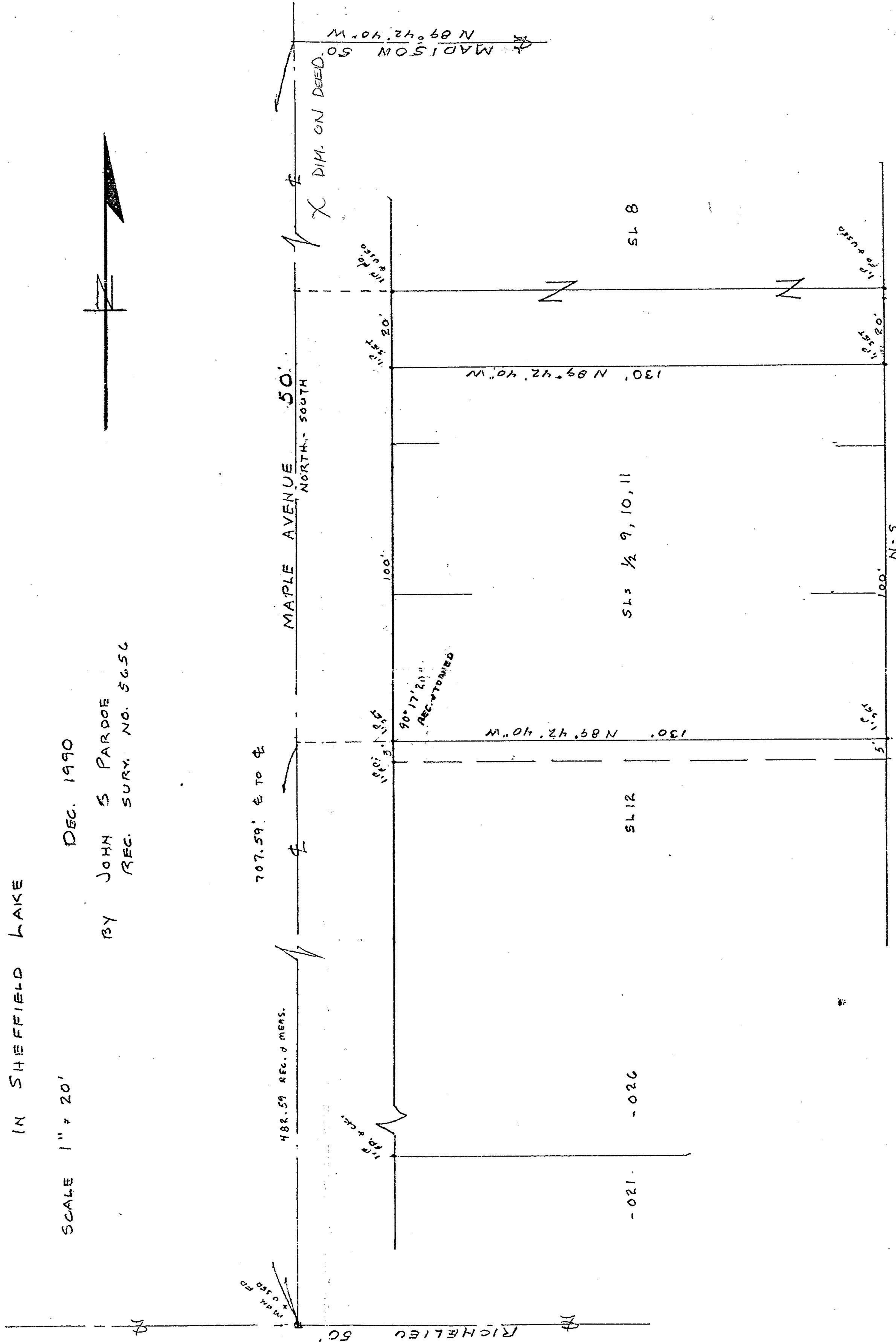
Disapproved \_\_\_\_\_

# SURVEY OF SUB LOTS 1/2 9, 10, 11 OF BORDER CITIES COMPANY SHORE SUBDIVISION IN SHEFFIELD LAKE

SCALE 1" = 20'

DEC. 1990

BY JOHN S PARDOE  
REC. SURY. NO. 5656



1/2 13

RICHFIELD AVENUE 50' WEST

488.59 REC. DIMENS.

707.59' E TO E

MAPLE AVENUE 50' NORTH-SOUTH

MADISON 50' N 89° 42' 40" W

1/2 DIM. ON DEED.

110' 35' 20"

110' 35' 20"

90° 17' 20" REC. DIMENS.

130' N 89° 42' 40" W

130' N 89° 42' 40" W

SL 8

SL 9, 10, 11

SL 12

- 026

- 021

110' 35' 20"

110' 35' 20"

100' N-S

5'