

APPROVED
LORAIN CO.
MAP DEPT.

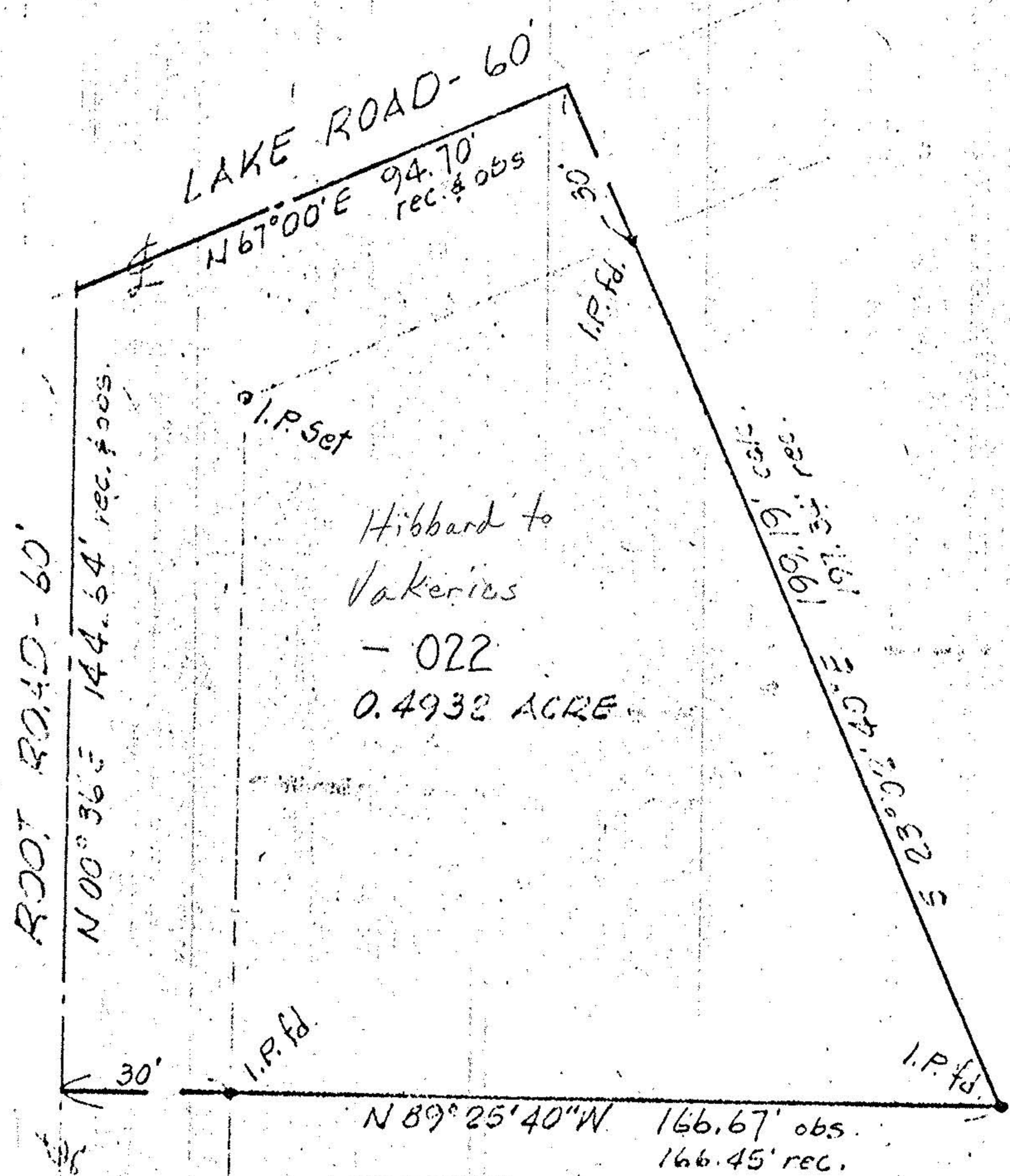
DATE 1-25-79

PAGE 3-00-045

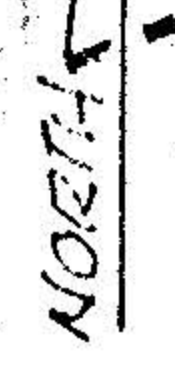
BY Carolyn J.

VOID AFTER 12410

03-00-045-102



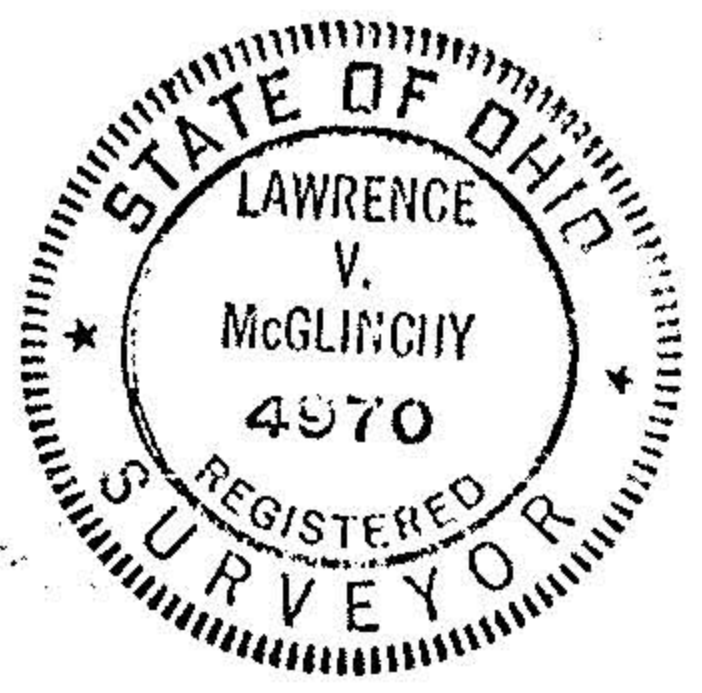
SCALE: 1" = 30'



APPROVED BY THE LORAIN CITY PLANNING COMMISSION... NO PLAT REQUIRED

Long B. Rodgers (RN)

SECRETARY LORAIN CITY PLANNING COMMISSION



MAP of SURVEY
PREPARED FOR PAUL VAKERICS
PART of ORIG. SHEFFIELD TWP. LOT No. 45
CITY of LORAIN, LORAIN COUNTY, OHIO

APPROVED
as to description only

Lowell H. Knissl Engr. Dept.

McGLINCHY & ASSOCIATES
PROFESSIONAL ENGINEER & SURVEYORS
ELYRIA OHIO
NOVEMBER 2, 1978 #784581

3-00-045