

# PLAT OF SURVEY

AS REQUESTED BY

## TOWN & SUBURB DEVELOPMENT CO.

SITUATED IN THE CITY OF SHEFFIELD LAKE,  
COUNTY OF LORAIN, AND STATE OF OHIO AND  
KNOWN AS BEING A PART OF ORIGINAL  
LOT NO. 45.



PREPARED BY:  
**Ciuni & Lynn Associates**  
CONSULTING ENGINEERS CLEVELAND, OHIO 44131

CURVE DATA TABLE

CURVE	RADIUS	LENGTH	TANGENT	CHORD	BEARING	DELTA
1	735.62'	256.78'	129.71'	255.48'	S13°43'13"E	200°00'00"
2	347.13'	258.11'	135.35'	252.21'	S17°54'52"W	42°36'10"
3	55.00'	234.79'	87.02'	92.88'	S83°24'47"E	244°35'28"
4	125.00'	131.86'	72.81'	125.83'	N69°06'10"E	60°26'24"
5	55.00'	86.39'	55.00'	77.78'	N06°07'03"W	90°00'00"
6	55.00'	23.48'	11.92'	23.31'	S13°28'35"E	242°7'52"
7	50.00'	45.92'	24.72'	44.32'	S00°35'59"W	52°37'00"
8	407.13'	105.95'	53.07'	105.26'	N19°28'53"E	145°11'13"
9	50.00'	41.47'	24.82'	38.25'	N51°39'16"E	79°12'00"
10	384.40'	155.75'	78.95'	154.67'	N79°38'53"E	231°2'46"
11	50.00'	24.32'	12.16'	24.16'	N84°42'24"W	381°19'57"
12	50.00'	24.32'	12.16'	24.16'	S24°42'24"W	282°12'51"
13	50.00'	41.48'	20.74'	40.97'	S80°45'08"W	182°17'51"
14	334.40'	113.22'	57.16'	112.88'	S80°16'07"W	192°23'56"
15	30.00'	45.66'	28.76'	41.53'	N48°14'10"W	87°55'31"
16	407.13'	9.10'	4.55'	9.10'	N03°04'49"W	01°16'49"
17	765.62'	267.25'	135.00'	265.90'	S13°43'13"E	200°00'00"

LINE DATA TABLE

LINE	DIRECTION	DISTANCE
L1	S03°43'13"E	2.36'
L2	S03°43'13"E	2.36'
L3	S45°31'16"E	53.85'

SUMMARY

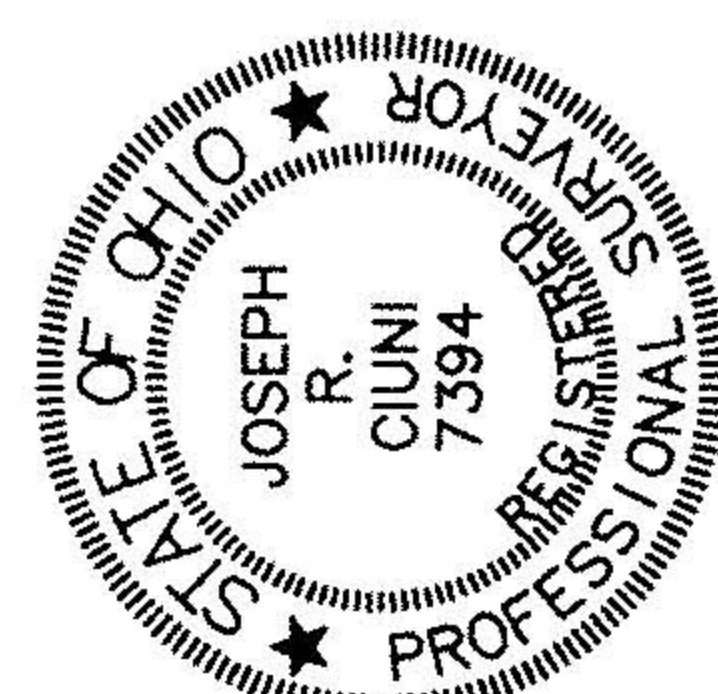
PARCEL 1	0.9897 AC
PARCEL 2	3.8014 AC
PARCEL 3	8.0687 AC
TOTAL	12.8598 AC

21069

APPROVED	LORAIN CO. MAP DEPT.
DATE	10-14-94
PAGE	3-00-045
BY	CAROLYN FRANKLIN
#	21069

CERTIFICATION:

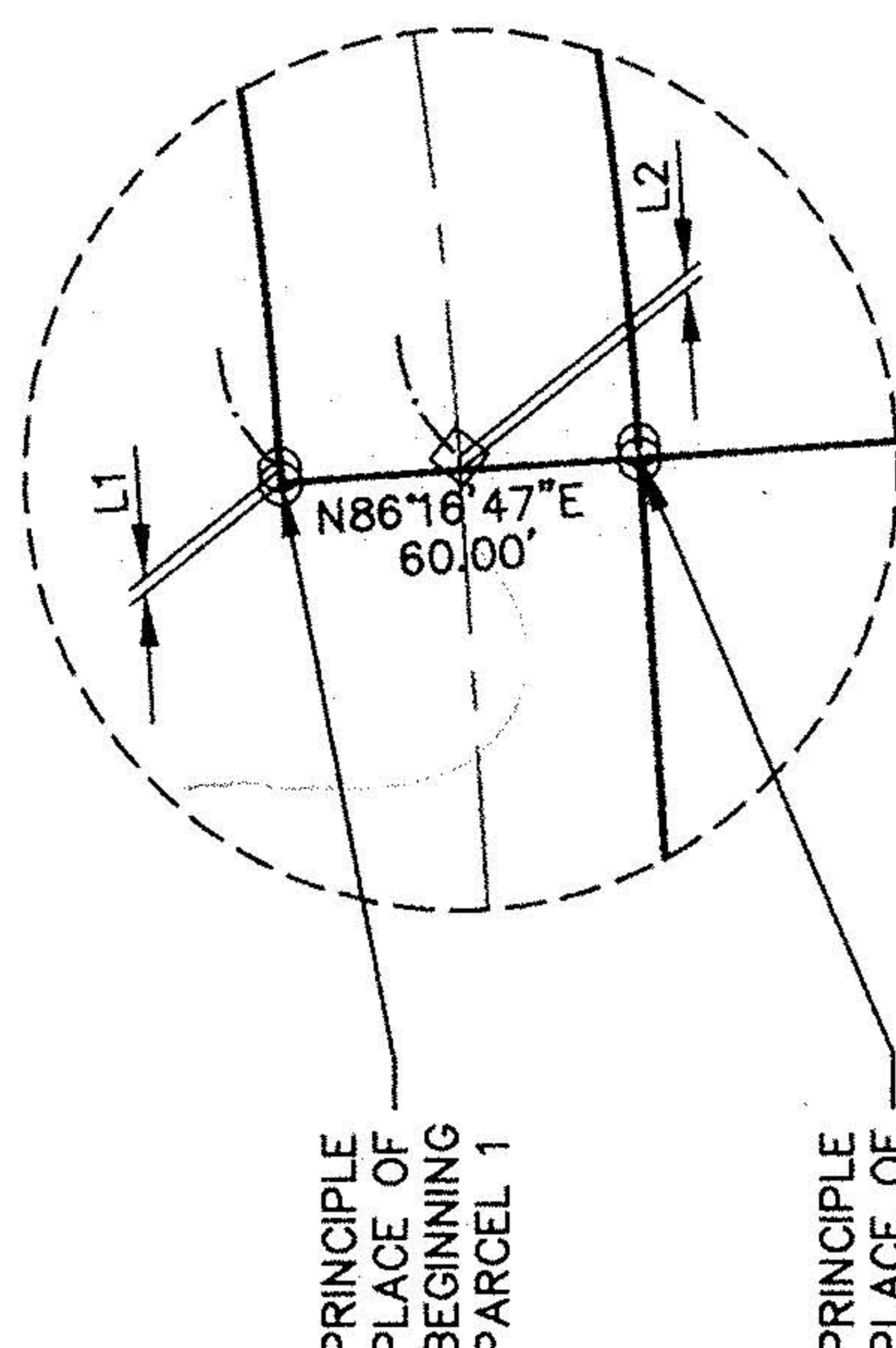
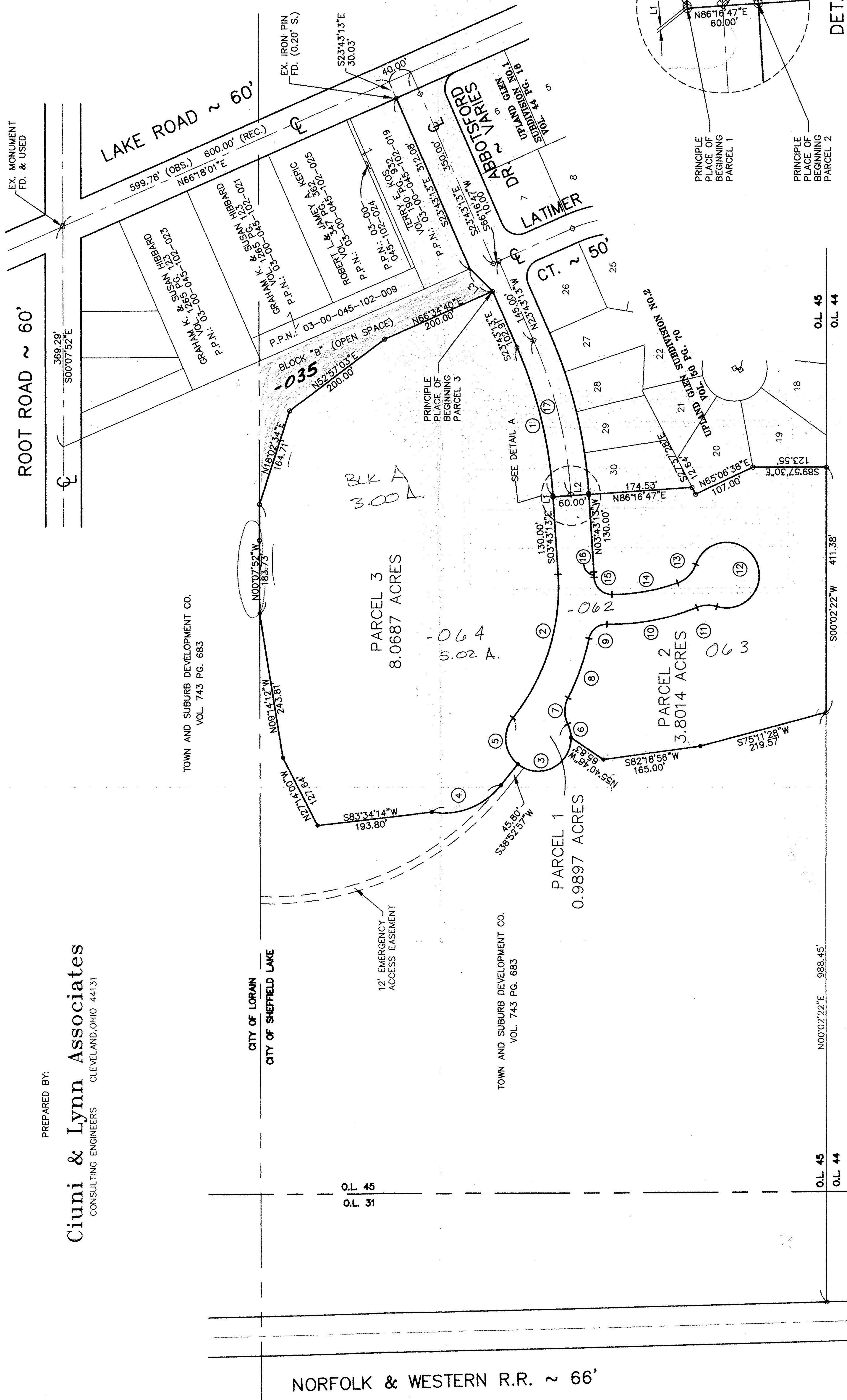
I HEREBY CERTIFY THAT I HAVE SURVEYED THE LAND SHOWN ON THIS SURVEY PLAT, AND THAT THIS IS A CORRECT REPRESENTATION OF THE LAND SURVEYED AND THAT I HAVE FOUND OR SET THE PINS AND MONUMENTS SHOWN.



JOSEPH R. CIUNI  
REGISTERED SURVEYOR  
NO. 7394

9/22/94

DATE



DETAIL A

LEGEND

- ◊ EXISTING MONUMENT BOX
- IRON PIN SET
- IRON PIN FOUND

FRANK J. BERG  
VOL. 670 PG. 786  
P.P. # 03-00-044-102-030

NORFOLK & WESTERN R.R. ~ 66'