

**LOT SPLIT FOR ROBERT THOMPSON**

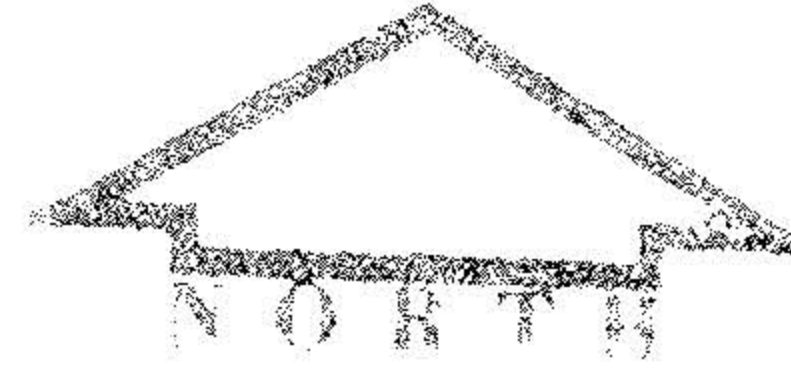
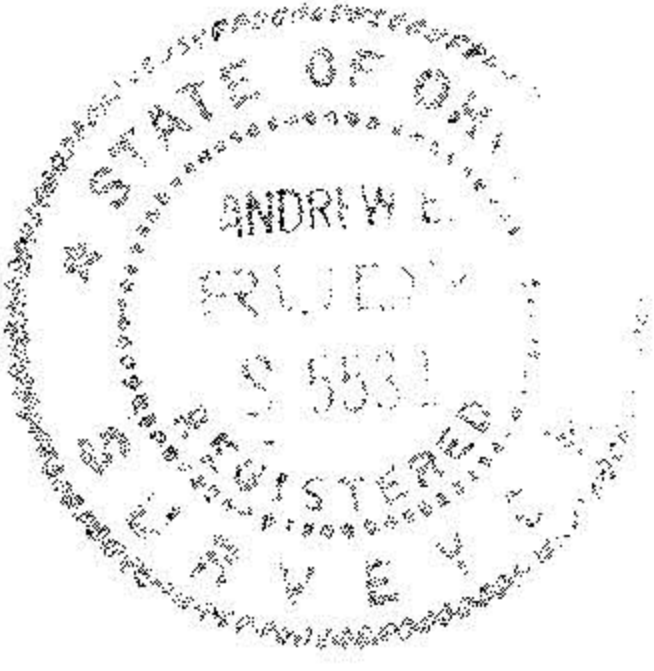
SITUATED IN THE TOWNSHIP OF COLUMBIA, COUNTY OF LORAIN AND STATE OF OHIO  
BEING PART OF ORIGINAL COLUMBIA TOWNSHIP NO. 5

DIMENSIONS SHOWN ON THIS PLAT ARE EXPRESSED IN FEET AND DECIMAL PARTS THEREOF.  
PERMANENT MONUMENTS ARE SET AT ALL POINTS INDICATED HEREON. ALL OF WHICH I CERTIFY  
TO BE CORRECT.

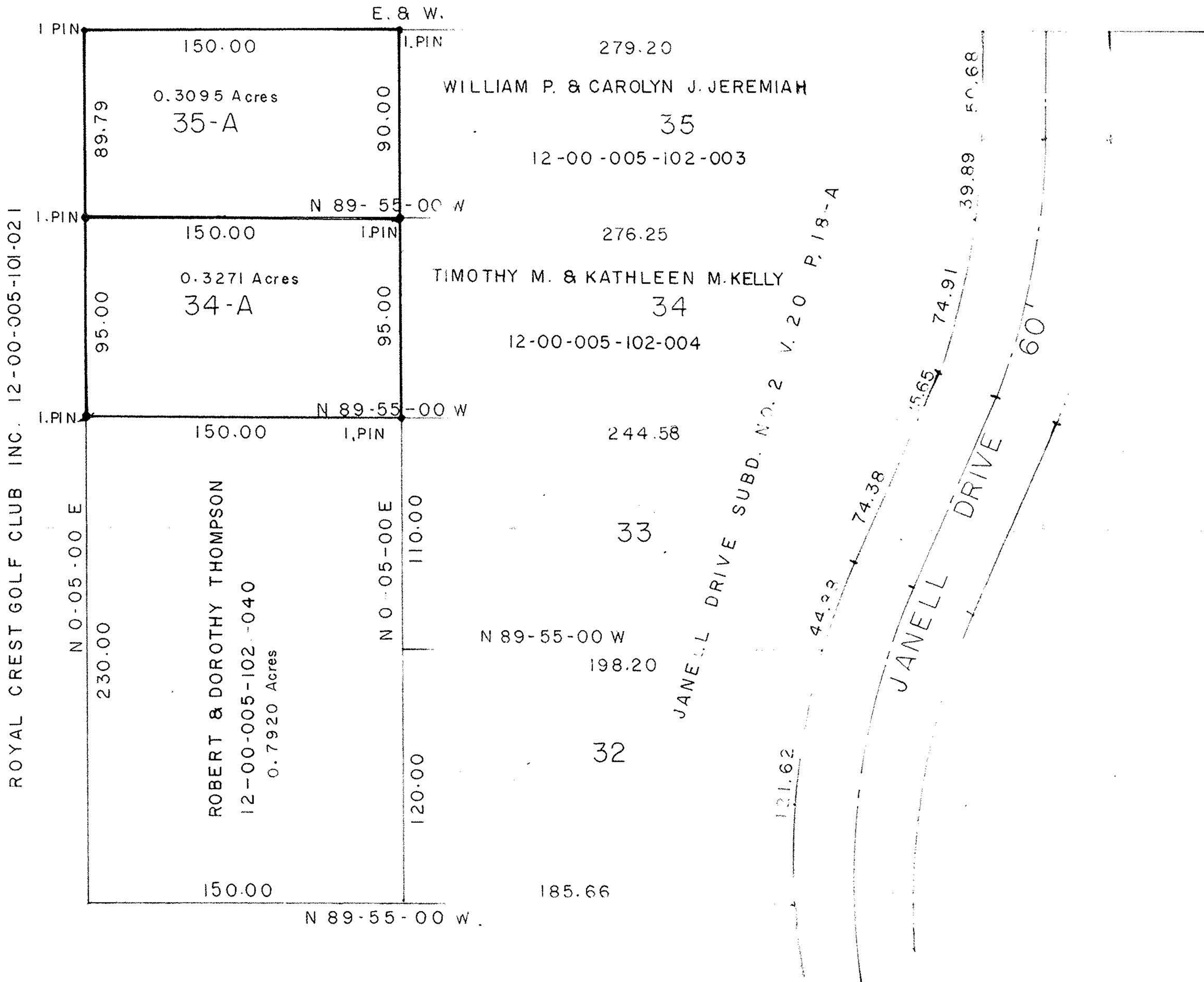
SCALE = 50' = 1"

*Andrew E. Rudy*  
ANDREW E. RUDY REG. SURVEYOR NO. 5531

NOVEMBER, 1990



ROYAL CREST GOLF CLUB INC. 12-00-005-102-001



**APPROVALS**

THIS PLAT APPROVED BY THE TRUSTEES OF COLUMBIA TOWNSHIP  
THIS \_\_\_\_\_ DAY OF \_\_\_\_\_ 1990

\_\_\_\_\_  
\_\_\_\_\_

THIS PLAT APPROVED AND ACCEPTED BY THE COUNTY ENGINEER  
OF LORAIN COUNTY, THIS \_\_\_\_\_ DAY OF \_\_\_\_\_ 1990

COUNTY ENGINEER

THIS PLAT APPROVED AND ACCEPTED BY COMMISSIONERS OF THE  
COUNTY OF LORAIN, THIS \_\_\_\_\_ DAY OF \_\_\_\_\_ 1990  
COMMISSIONERS

\_\_\_\_\_  
\_\_\_\_\_

**#19248**

APPROVED
LORAIN CO.
MAP DEPT.
DATE 1-4-91
PAGE 12-00-005-B
BY CAROLYN FRANCIS
VOID AFTER #19243

12-00-005  
-102-