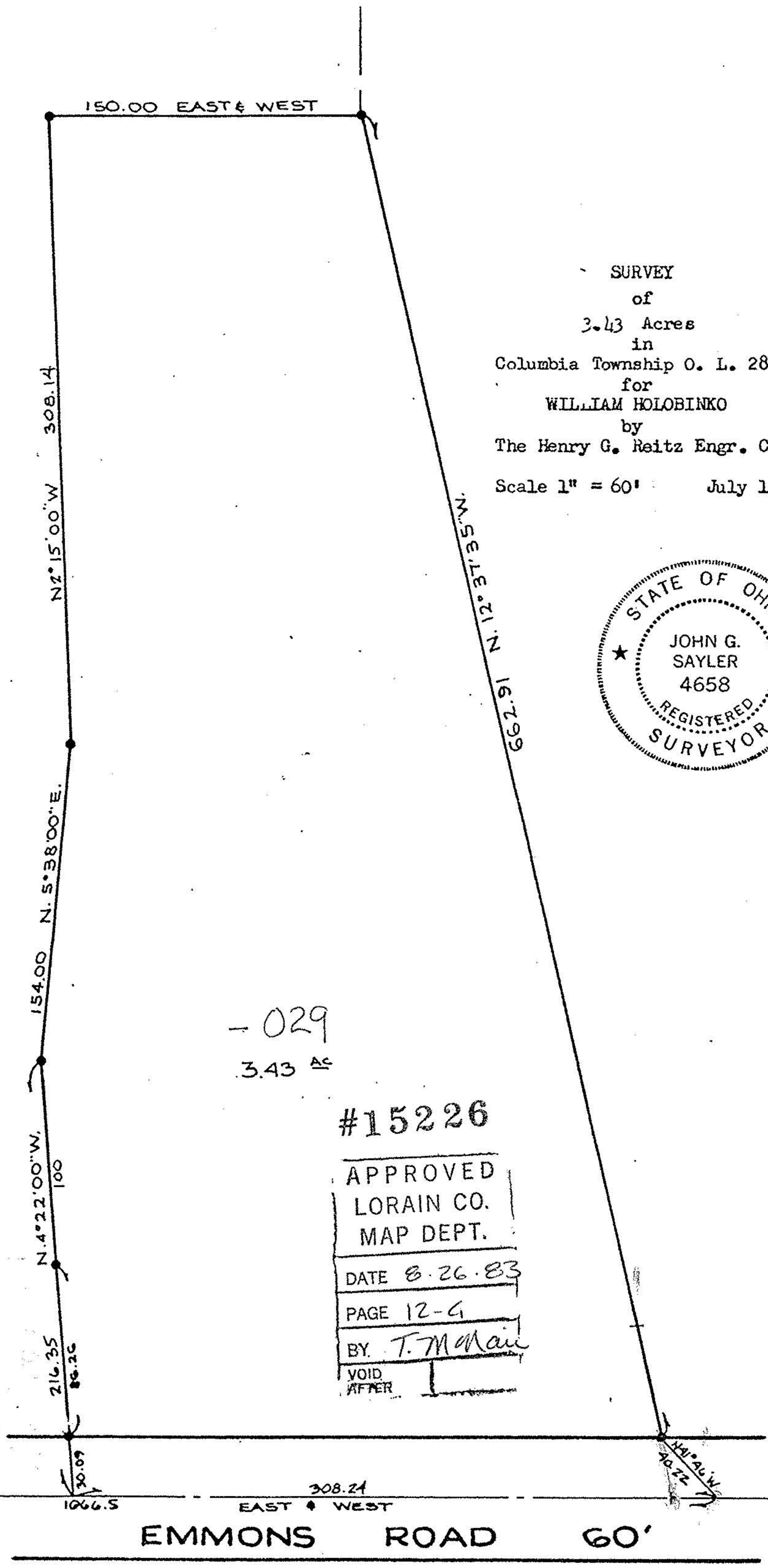


12-00-028-000 12-4

#15226

O.L. 28
O.L. 28

12-4



150.00 EAST & WEST

N 2° 15' 00\" W 308.14

N 5° 38' 00\" E 154.00

N 4° 22' 00\" W 216.35

216.35
88.26

30.09
1066.5

- 029
3.43 AC

#15226

APPROVED
LORAIN CO.
MAP DEPT.
DATE 8.26.83
PAGE 12-4
BY T. McMan
VOID AFTER

SURVEY
of
3.43 Acres
in
Columbia Township O. L. 28
for
WILLIAM HOLOBINKO
by
The Henry G. Reitz Engr. Co.
Scale 1" = 60' July 1983



1. MON. USED

EMMONS ROAD 60'

O.L. 29
O.L. 28
BOONE ROAD
O.L. 13
O.L. 12