

NE COR LOT 36
E MON BOX
USED

CHESTNUT RIDGE RD.

N 50°15'36" E 1174.35 R.F.U.

EAST LINE O.L. 36
S 01°25'52" E

S. LINE RIDGEVILLE TWP. LOT NO. 36
N 89°45'38" W
S. LINE EATON
TWP LOT. 70

3.9788 Ac.

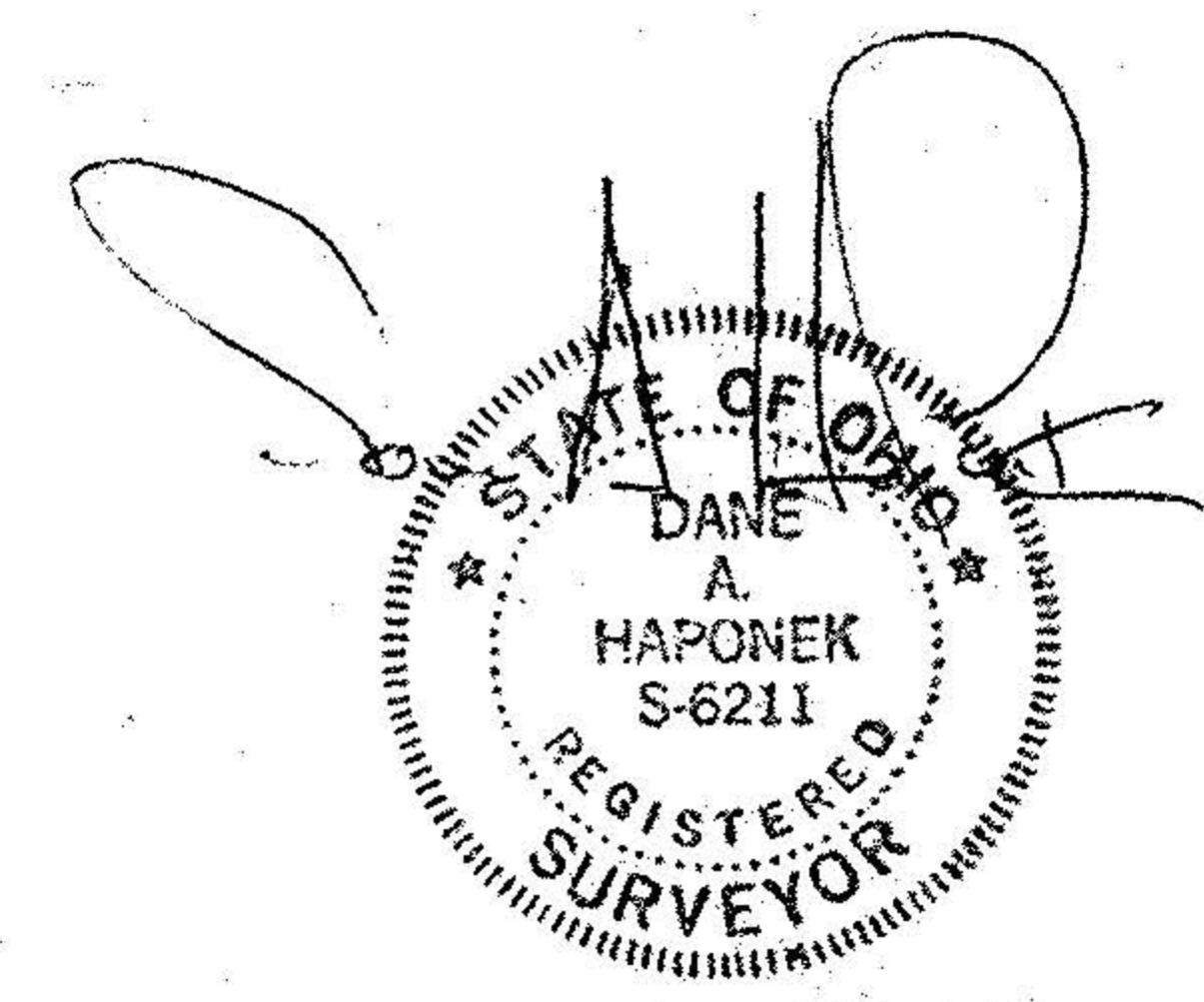
DATE: MAY 1987
SCALE: 1"=100'

**SURVEY
OF PART OF
ORIGINAL EATON TWP.
LOT NO. 70
TOWNSHIP OF EATON COUNTY OF LORAIN
STATE OF OHIO**

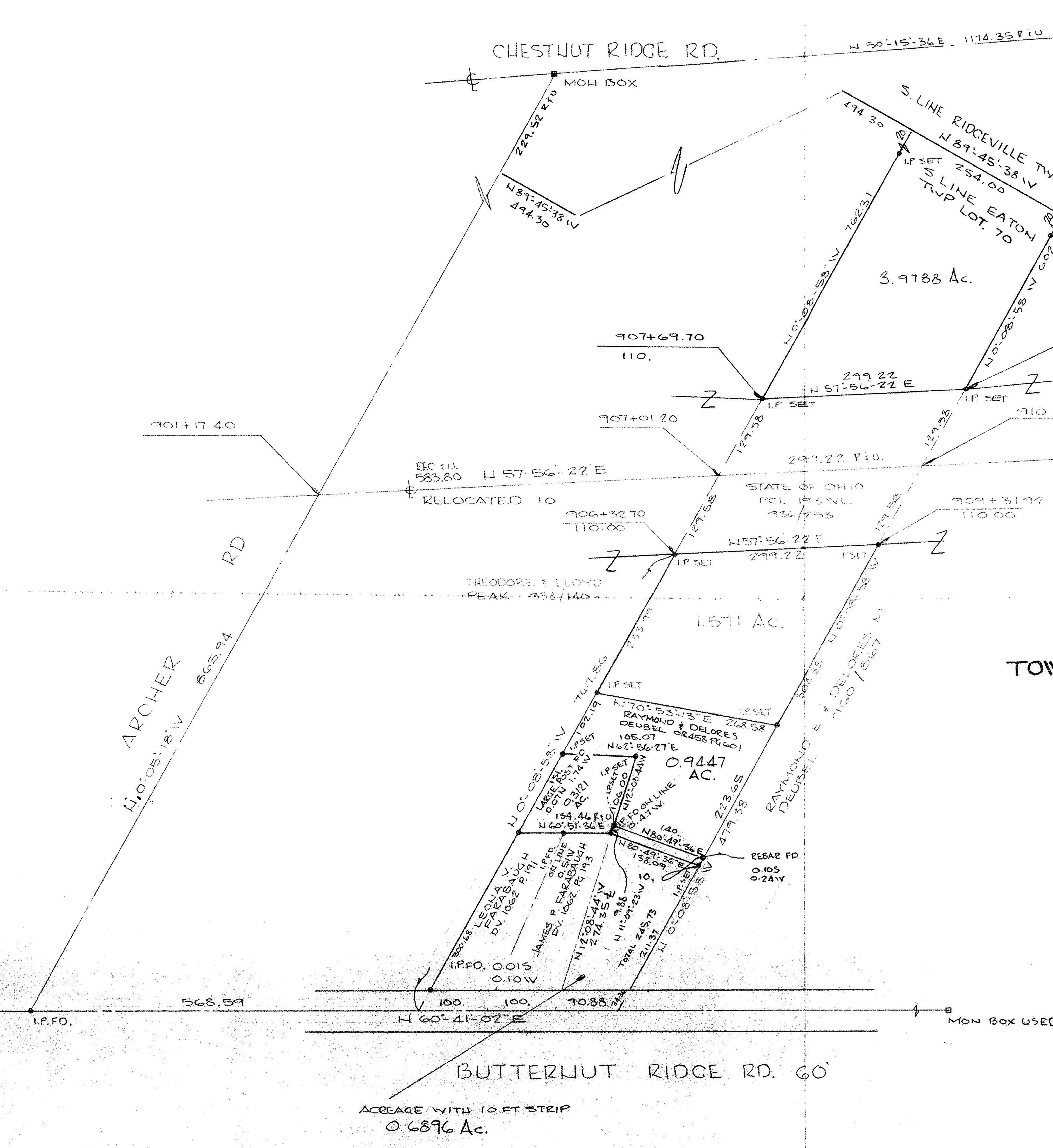
PREPARED FOR:
RAYMOND DEUBEL
36574 BUTTERNUT RIDGE RD.
ELYRIA, O
AND
CAROL & BOB STRUCK

PREPARED BY:
HAPONEK AND ASSOC.
34100 CENTER RIDGE RD.
N. RIDGEVILLE, O

#22202
APPROVED
LORAIN CO.
MAP DEPT
DATE 10/4/97
PAGE 11-00-070-B
BY K. Colbert



REVISED 1-24-96 ADDED BACKLAND & PINNED 1.002 AC
REVISED 7-13-91 ADDED 1.2884 ACRES 87-13



ACREAGE WITH 10 FT STRIP
0.6896 Ac.

BUTTERNUT RIDGE RD. 60'

568.59

N 60°41'02" E

MON BOX USED

907+69.70

907+01.70

REC 10.
583.80

RELOCATED 10

906+32.70
110.00

N 57°56'22" E

299.22

I.P. SET

909+31.97
110.00

1.571 Ac.

7607.86

I.P. SET

N 70°53'13" E 268.58

RAYMOND & DELORES
DEUBEL GR 458 R 601

105.07

N 62°56'27" E

0.9447
AC.

106.00

N 12°08'44" V

274.35

I.P. SET

N 80°49'36" E

479.38

I.P. SET

N 11°01'23" V

211.37

I.P. SET

N 0°08'58" V

223.65

I.P. SET

N 12°08'44" V

274.35

I.P. SET

STATE OF OHIO
PCL IP SNL
236/253

THEODORE & LLOYD
PEAK - 358/140

RAYMOND & DELORES
DEUBEL
7160 / 1867 M

REBAR PD
0.105
0.24 V

299.22 R.F.U.

129.58

I.P. SET

129.58

I.P. SET

129.58

I.P. SET

129.58

I.P. SET

129.58

I.P. SET

129.58

I.P. SET

129.58

I.P. SET

129.58

I.P. SET

129.58

I.P. SET

129.58

I.P. SET

129.58

I.P. SET

129.58

I.P. SET

901+17.40

ARCHER RD

865.94

N 10°05'18" V

568.59

I.P. FD.

100

100

90.88

568.59

I.P. FD.

568.59

110.

110.

110.00

110.00

110.00

110.00

110.00

110.00

110.00

110.00

110.00

110.00

110.00

907+69.70

907+01.70

906+32.70

906+32.70

906+32.70

906+32.70

906+32.70

906+32.70

906+32.70

906+32.70

906+32.70

906+32.70

906+32.70

907+69.70

907+01.70

906+32.70

906+32.70

906+32.70

906+32.70

906+32.70

906+32.70

906+32.70

906+32.70

906+32.70

906+32.70

906+32.70

907+69.70

907+01.70

906+32.70

906+32.70

906+32.70

906+32.70

906+32.70

906+32.70

906+32.70

906+32.70

906+32.70

906+32.70

906+32.70

907+69.70

907+01.70

906+32.70

906+32.70

906+32.70

906+32.70

906+32.70

906+32.70

906+32.70

906+32.70

906+32.70

906+32.70

906+32.70

907+69.70

907+01.70

906+32.70

906+32.70

906+32.70

906+32.70

906+32.70

906+32.70

906+32.70

906+32.70

906+32.70

906+32.70

906+32.70

907+69.70

907+01.70

906+32.70

906+32.70

906+32.70

906+32.70

906+32.70

906+32.70

906+32.70

906+32.70

906+32.70

906+32.70

906+32.70

907+69.70

907+01.70

906+32.70

906+32.70

906+32.70

906+32.70

906+32.70

906+32.70

906+32.70

906+32.70

906+32.70

906+32.70

906+32.70

907+69.70

907+01.70

906+32.70

906+32.70

906+32.70

906+32.70

906+32.70

906+32.70

906+32.70

906+32.70

906+32.70

906+32.70

906+32.70

907+69.70

907+01.70

906+32.70

906+32.70

906+32.70

906+32.70

906+32.70

906+32.70

906+32.70

906+32.70

906+32.70

906+32.70

906+32.70

907+69.70

907+01.70

906+32.70

906+32.70

906+32.70

906+32.70

906+32.70

906+32.70

906+32.70

906+32.70

906+32.70

906+32.70

906+32.70

907+69.70

907+01.70

906+32.70

906+32.70

906+32.70

906+32.70

906+32.70

906+32.70

906+32.70

906+32.70

906+32.70

906+32.70

906+32.70

907+69.70

907+01.70

906+32.70

906+32.70

906+32.70

906+32.70

906+32.70

906+32.70

906+32.70

906+32.70

906+32.70

906+32.70

906+32.70

907+69.70

907+01.70

906+32.70

906+32.70

906+32.70

906+32.70

906+32.70

906+32.70

906+32.70

906+32.70

906+32.70

906+32.70

906+32.70

907+69.70

907+01.70

906+32.70

906+32.70

906+32.70

906+32.70

906+32.70