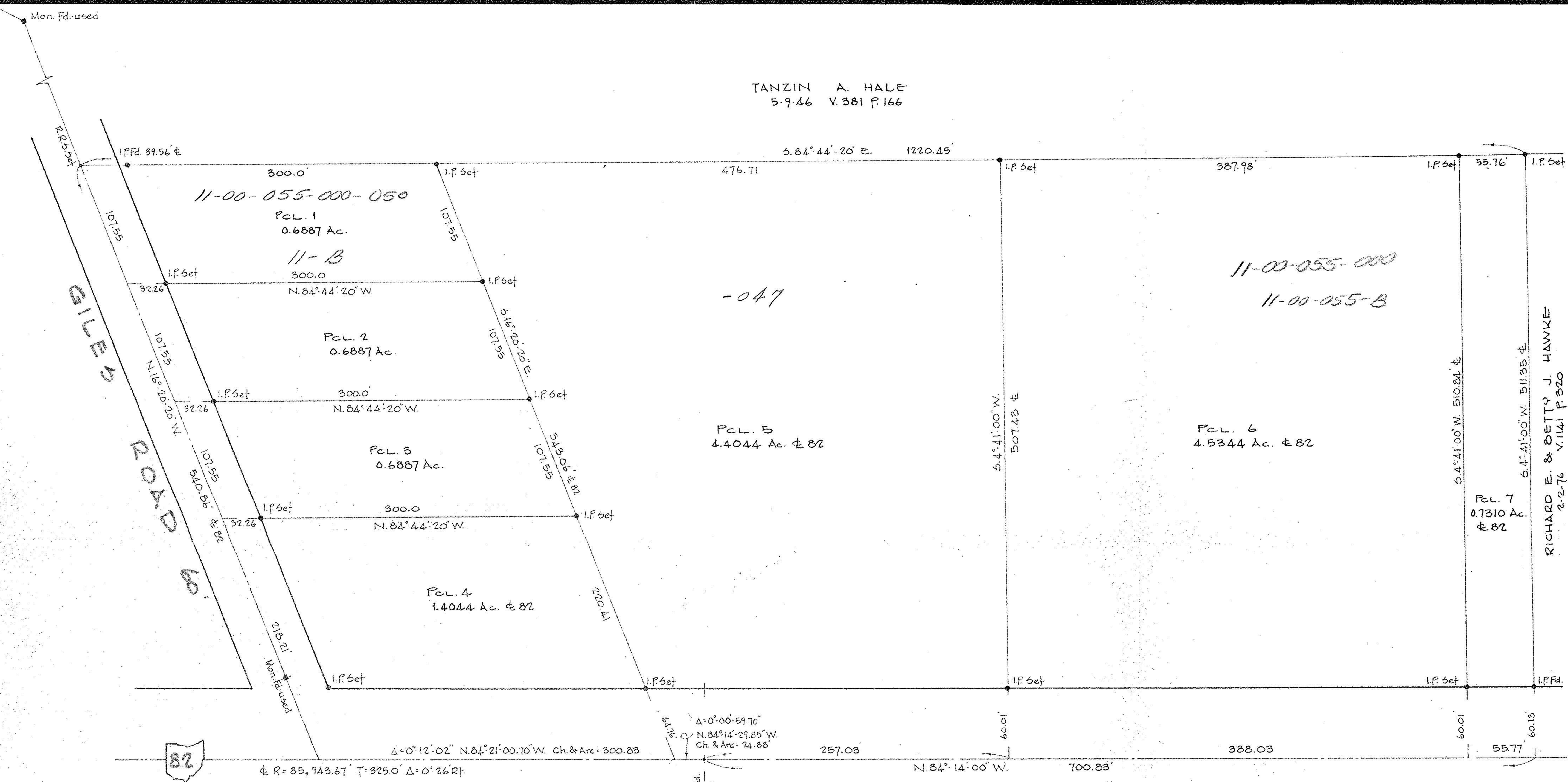
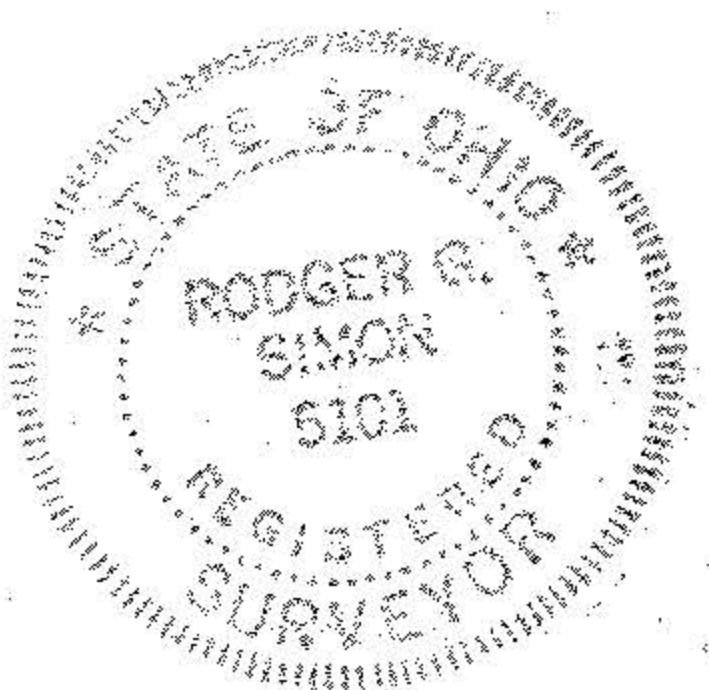
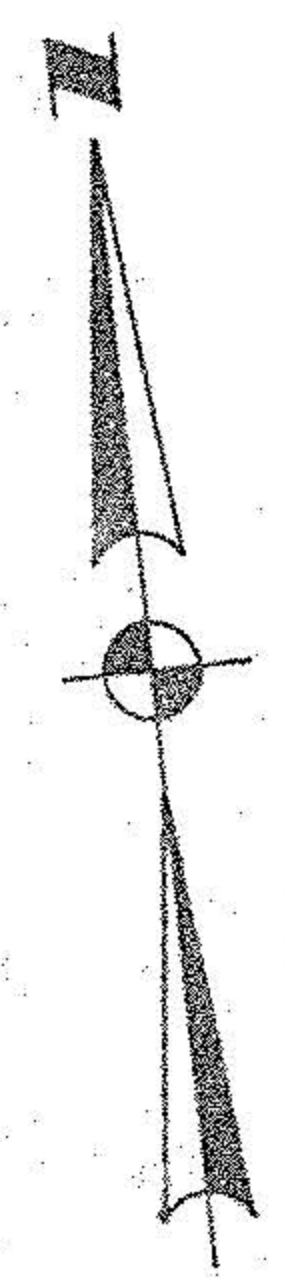


TANZIN A. HALE
5-9-46 V. 381 P. 166



ELYRIA - TWINSBURG ROAD



P.T. of curve spl. fd.
State # 510.373+88.65

#13405

APPROVED
LORAIN CO.
MAP DEPT.
DATE 2-13-80
PAGE 1100-055-B
BY T. McNeil
VOID AFTER

SURVEY FOR

NELLIE LYONS

PART OF O.L. 55 EATON TWP., LORAIN CO., OHIO
SCALE 1"=60'
JULY 3, 1979
LAUNDON - SIMON - CAHL & ASSOC. ENGINEERS - SURVEYORS

COPY

JUL 6 1979

JOB N° 79-890 FB. 160 P. 43