

0.000 Conv. Move. W/Crossbars Found & USED E STA 441+51.72

83

AVON BELDEN ROAD (PLAT VOL. 21 P. 24)

0.L.46

0.L.47

PHILIP & LINDA T. MAIORCA
V. 1982 P. 934

JAMES C & EITH L JONES
V. 1016 P. 579

ROBERT & RUBY BURDICK
V. 623 P. 435

ANDREW E & COLLEEN J KARP
V. 1404 P. 632

BESSIE GAYNE
V. 1329 P. 552

STERLING H & MARY L TITE
V. 286 P. 398

5.86-27.00 E. 571.85 E

PARCEL No 1
3.4731 AC.

PARCEL No 2
3.1157 AC.

PARCEL No 3
3.3237 AC.

PARCEL No 4
3.4731 AC.

PARCEL No 5
3.4731 AC.

PARCEL No 6
3.4731 AC.

PARCEL No 7
3.4731 AC.

PARCEL No 8
3.4731 AC.

PARCEL No 9
3.4731 AC.

PARCEL No 10
3.4731 AC.

PARCEL No 11
3.4731 AC.

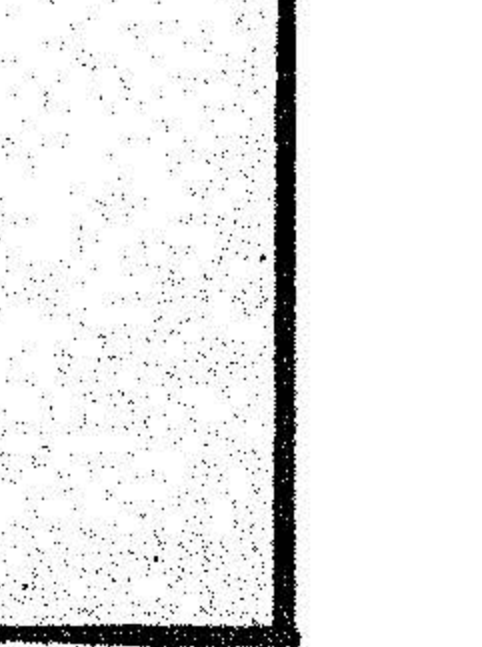
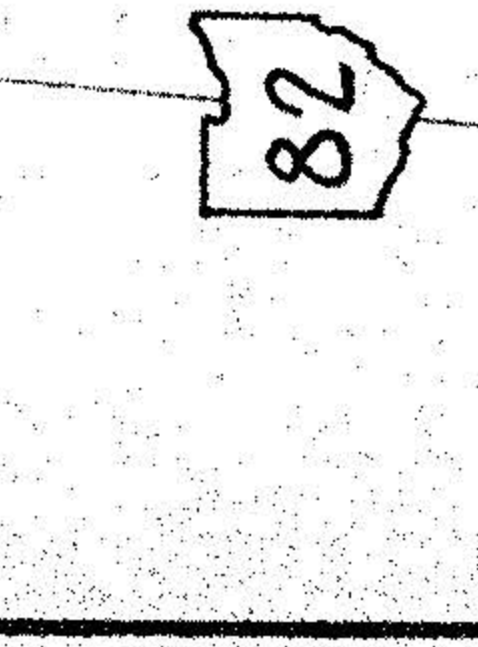
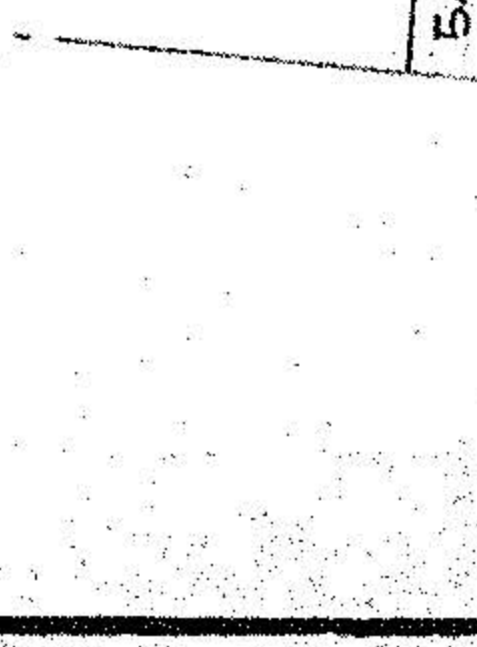
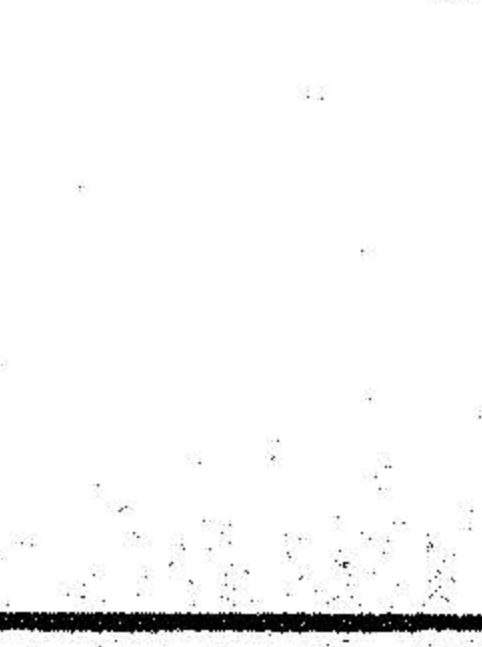
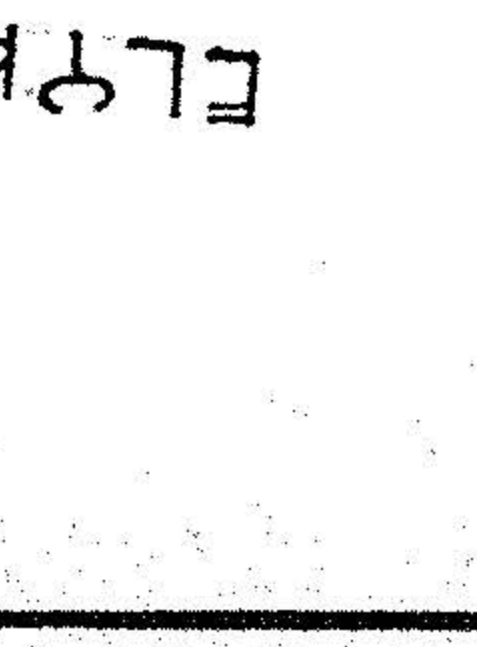
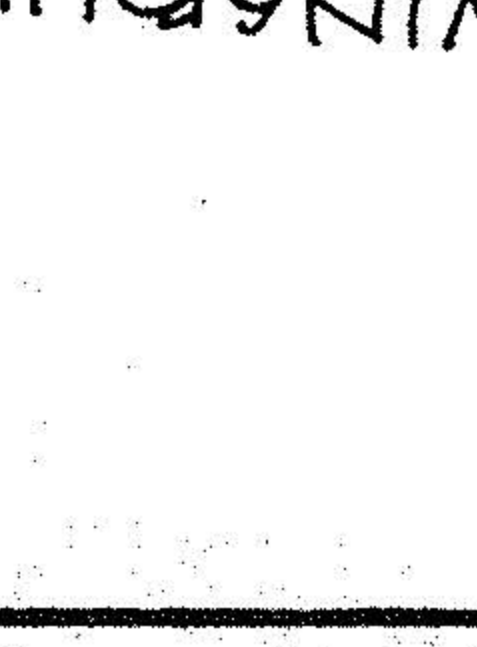
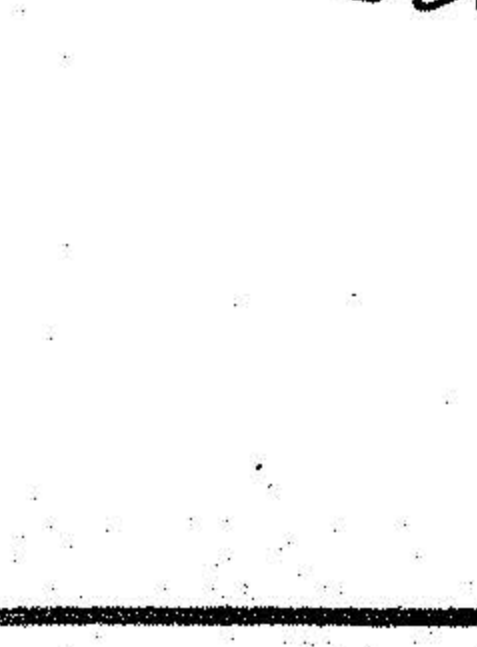
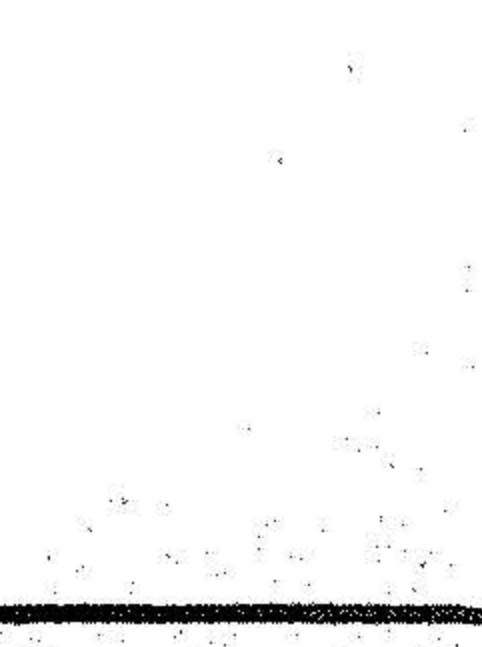
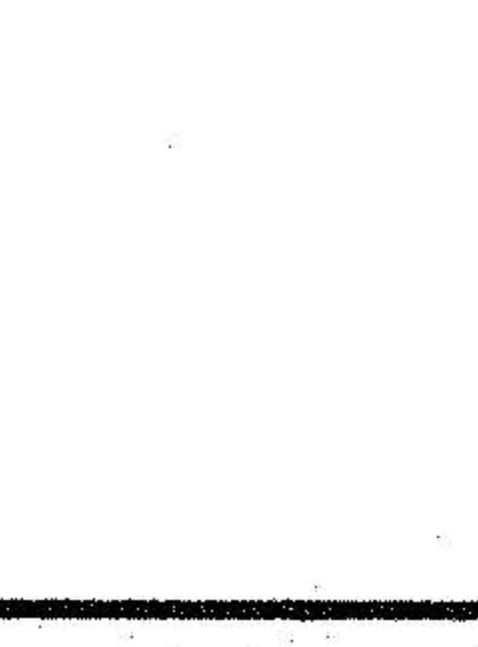
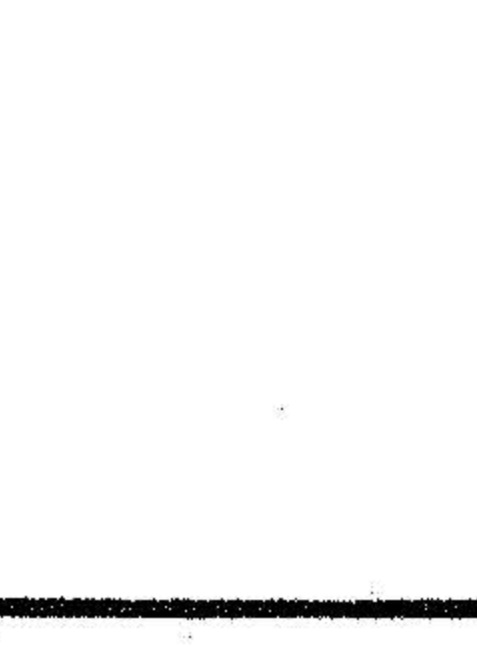
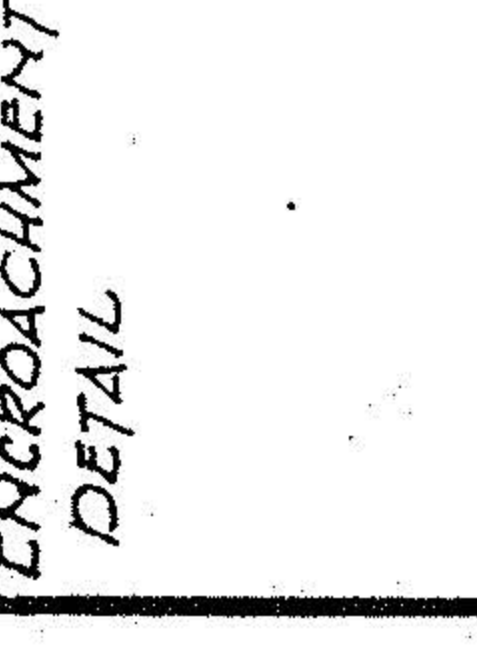
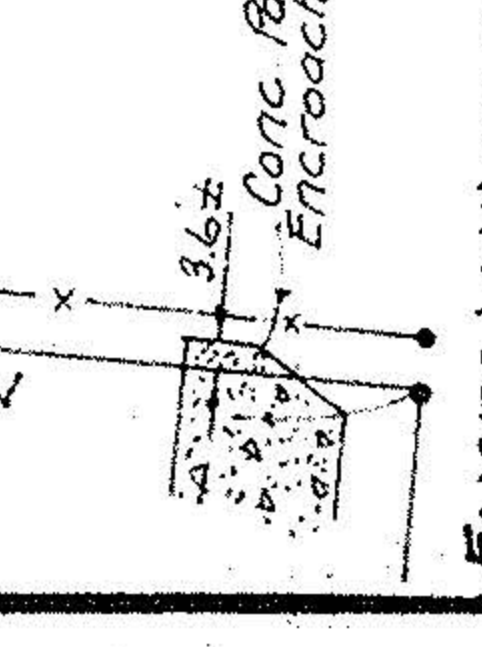
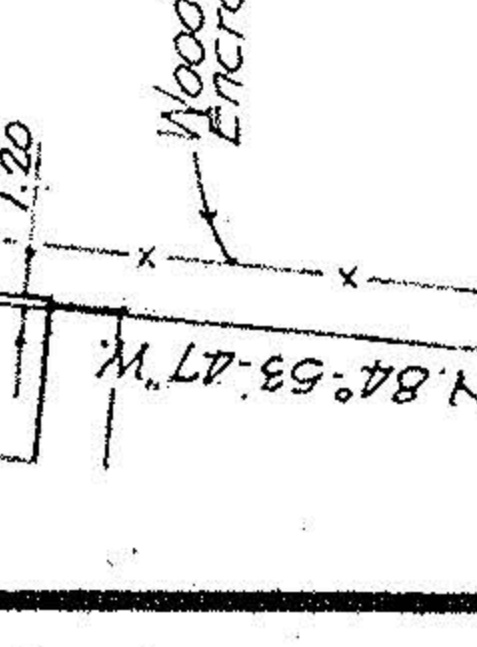
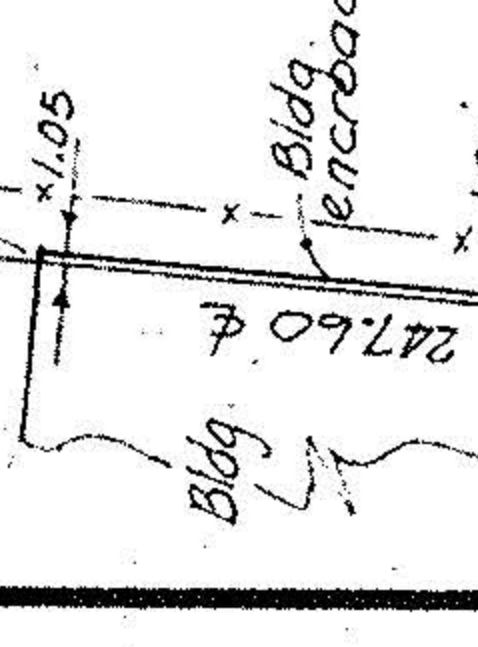
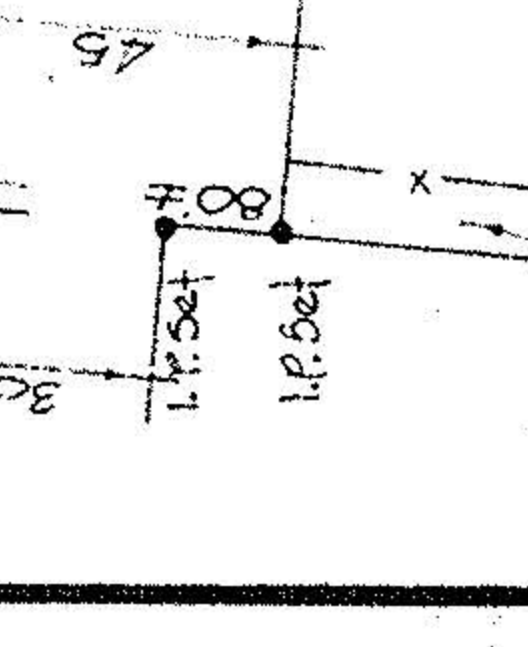
PARCEL No 12
3.4731 AC.

PARCEL No 13
3.4731 AC.

PARCEL No 14
3.4731 AC.

PARCEL No 15
3.4731 AC.

MORRIS BOX



147.60

147.60

147.60

147.60

147.60

147.60

147.60

147.60

147.60

147.60

147.60

147.60

147.60

147.60

147.60

147.60

147.60

147.60

147.60

147.60

147.60

147.60

147.60

147.60

147.60

147.60

147.60

147.60

147.60

147.60

147.60

147.60

147.60

147.60

147.60

147.60

147.60

147.60

147.60

147.60

147.60

147.60

147.60

147.60

147.60

147.60

147.60

147.60

147.60

147.60

147.60

147.60

147.60

147.60

147.60

147.60

147.60

147.60

147.60

147.60

147.60

147.60

147.60

147.60

147.60

147.60

147.60

147.60

147.60

147.60

147.60

147.60

147.60

147.60

147.60

147.60

147.60

147.60

147.60

147.60

147.60

147.60

147.60

147.60

147.60

147.60

147.60

147.60

147.60

147.60

147.60

147.60

147.60

147.60

147.60

147.60

147.60

147.60

147.60

147.60

147.60

147.60

147.60

147.60

147.60

147.60

147.60

147.60

147.60

147.60

147.60

147.60

147.60

147.60

147.60

147.60

147.60

147.60

147.60

147.60

147.60

147.60

147.60

147.60

147.60

147.60

147.60

147.60

147.60

147.60

147.60

147.60

147.60

147.60

147.60

147.60

147.60

147.60

147.60

147.60

147.60

147.60

147.60

147.60

147.60

147.60

147.60

147.60

147.60

147.60

147.60

147.60

147.60

147.60

147.60

147.60

147.60

147.60

147.60

147.60

147.60

147.60

147.60

147.60

147.60

147.60

147.60

147.60

147.60

147.60

147.60

147.60

147.60

147.60

147.60

147.60

147.60

147.60

147.60

147.60

147.60

147.60

147.60

147.60

147.60

147.60

147.60

147.60

147.60

147.60

147.60

147.60

147.60

147.60

147.60

147.60

147.60

147.60

147.60

147.60

147.60

147.60

147.60

147.60

147.60

147.60

147.60

147.60

147.60

147.60

147.60

147.60

147.60

147.60

147.60

147.60

147.60

147.60

147.60

147.60

147.60

147.60

147.60

147.60

147.60

147.60

147.60

147.60

147.60

147.60

147.60

147.60

147.60

147.60

147.60

147.60

147.60

147.60

147.60

147.60

147.60

147.60

147.60

147.60

147.60

147.60