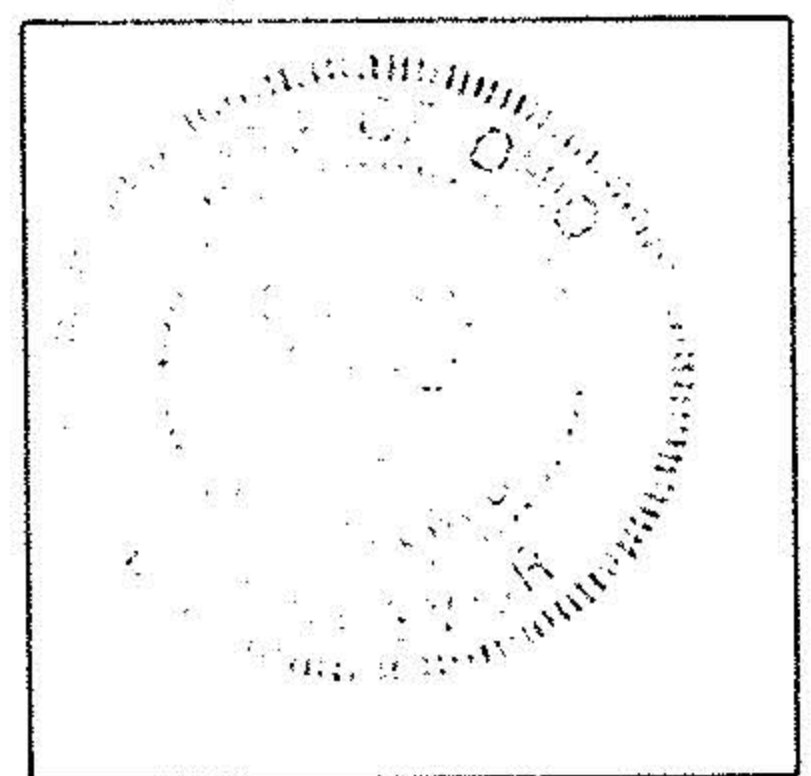


JOHN W. TERNES D.V. 767 P. 84

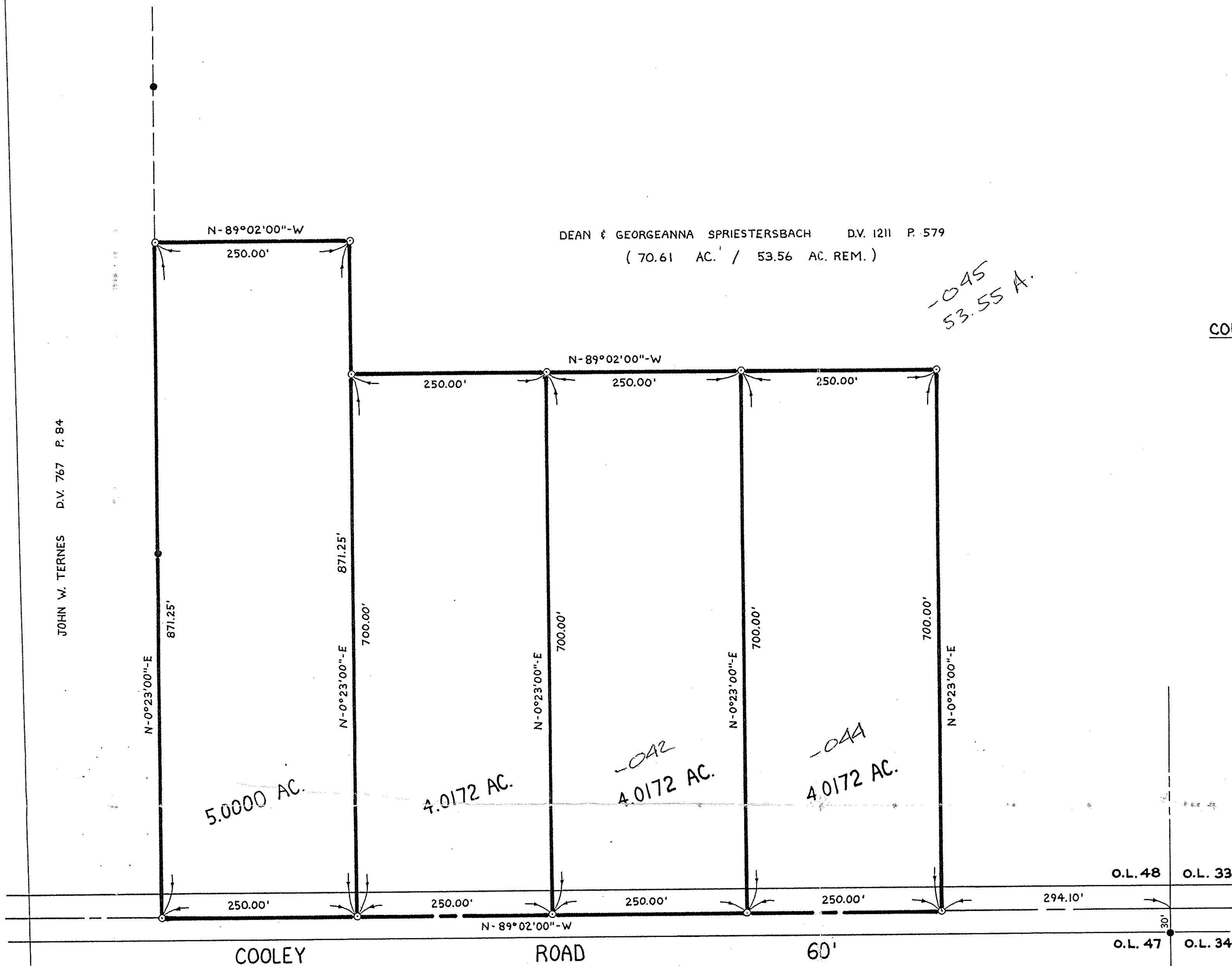
DEAN & GEORGEANNA SPRIESTERSBACH D.V. 1211 P. 579  
(70.61 AC. / 53.56 AC. REM.)

-045  
53.55 A.

**BOUNDARY SURVEY**  
PART OF EATON TOWNSHIP  
ORIGINAL LOT NUMBER 48  
TOWNSHIP OF EATON  
COUNTY OF LORAIN STATE OF OHIO



*David L. Elwell*  
DAVID L. ELWELL REG. SURV. #6333



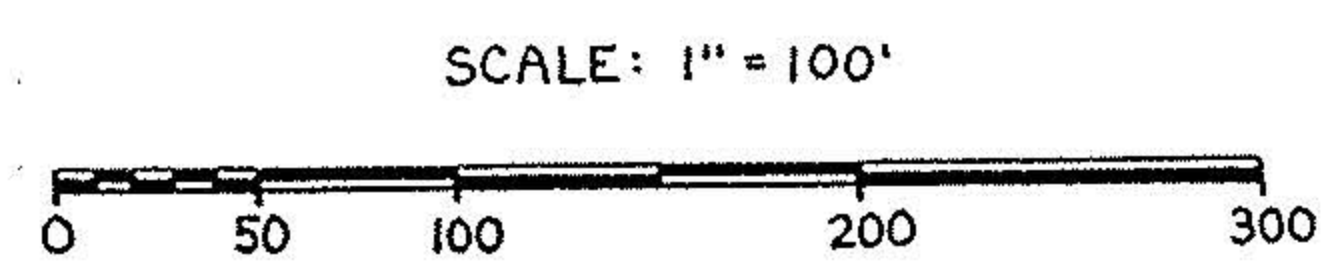
5.0000 AC.

4.0172 AC.

-042  
4.0172 AC.

-044  
4.0172 AC.

● ..... I.P. FOUND  
○ ..... I.P. SET



PREPARED BY:  
**KS ASSOCIATES INC.**  
ENGINEERS SURVEYORS  
AUG. 11, 1989