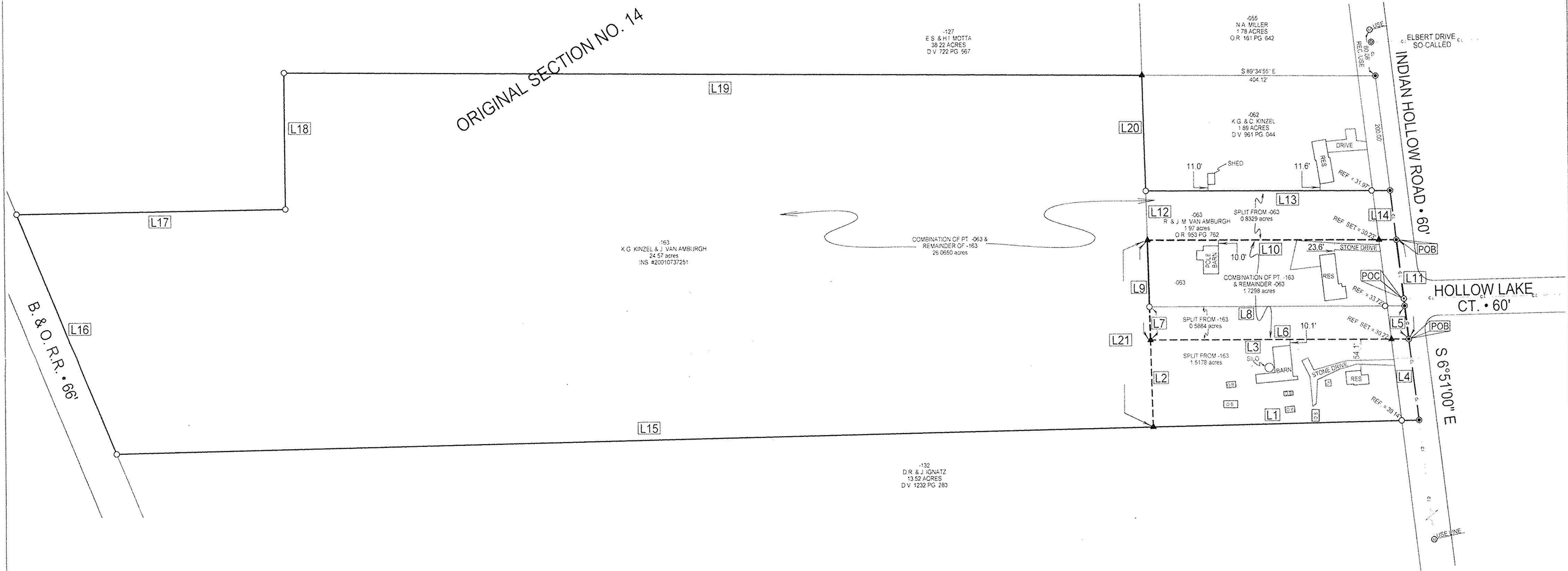


PLAT OF BOUNDARY SURVEY
RONALD & JOYCE VAN AMBURGH
 PT. OF ORIGINAL SECTION NO. 14
 TOWNSHIP OF CARLISLE, LORAIN COUNTY, OHIO

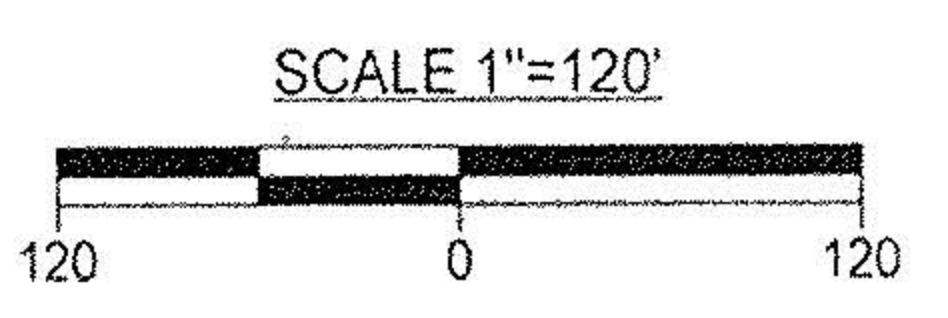
Legend

- Iron Pipe Found
- ⊙ PK Nail Found
- ⊙ Iron Pin In Monument Box Found
- ⊙ Magnetic PK Spike Set
- ▲ 5/8" Iron Pin Set with Cap Stamped "Kelsner 7871"
- Nail Set



ERROR OF CLOSURE IS LESS THAN 1:10,000.

BEARINGS ARE ASSUMED.



LINE TABLE SPLIT FROM -163

Id	Bearing	Distance
L5	S 6°51'00" E	58.12'
L6	N 89°56'46" W	446.94'
L7	N 1°28'46" W	57.72'
L8	S 89°56'46" E	441.50'

LINE TABLE 1.5178 acre PARCEL FROM -163

Id	Bearing	Distance
L1	S 88°46'03" W	460.03'
L2	N 1°28'46" W	150.91'
L3	S 89°56'46" E	446.94'
L4	S 6°51'00" E	141.56'

LINE TABLE SPLIT FROM -063

Id	Bearing	Distance
L10	N 89°49'17" W	430.81'
L12	N 1°28'46" W	85.04'
L13	S 89°49'17" E	422.80'
L14	S 6°51'00" E	85.64'

LINE TABLE COMBINATION OF PT. -163 & REMAINDER -063

Id	Bearing	Distance
L6	N 89°56'46" W	446.94'
L9	N 1°28'46" W	172.23'
L10	S 89°49'17" E	430.81'
L11	S 6°51'00" E	172.48'

POC TO POB TABLE

PARCEL	DISTANCE	BEARING
SPLIT FROM -163	70.45'	S 6°51'00" E
SPLIT FROM -063	102.03'	N 6°51'00" W
COMBINATION OF PT. -163 & REMAINDER OF -063	70.45'	S 6°51'00" E
COMBINATION OF PT. -063 & REMAINDER OF -163	102.03'	N 6°51'00" W
1.5178 acre PARCEL FROM -163	70.45'	S 6°51'00" E

LINE TABLE COMBINATION OF PT. -063 & REMAINDER -163

Id	Bearing	Distance
L14	S 6°51'00" E	85.64'
L10	N 89°49'17" W	430.81'
L21	S 1°28'46" E	323.14'
L15	S 88°46'03" W	1796.36'
L16	N 22°25'35" W	448.95'
L17	N 89°09'08" E	466.46'
L18	N 0°09'22" W	235.82'
L19	S 89°34'55" E	1485.79'
L20	S 1°28'46" E	200.27'
L13	S 89°49'17" E	422.80'



#00727

APPROVED
 LORAIN CO.
 MAP DEPT.
 DATE 5/8/01
 PAGE 10-00-01-G & H
 BY T. SPILLMAN
 WORD # 01-00727

LAUNDON • SIMON • KELSNER & ASSOC., INC.
 PROFESSIONAL LAND SURVEYORS
 110 MIDDLE AVE. • ELYRIA, OHIO • 44035
 PHONE (440) 322-7625
 Alex Kelsner
 RLS #7871

DATE:	03/27/01
JOB NO.:	013351