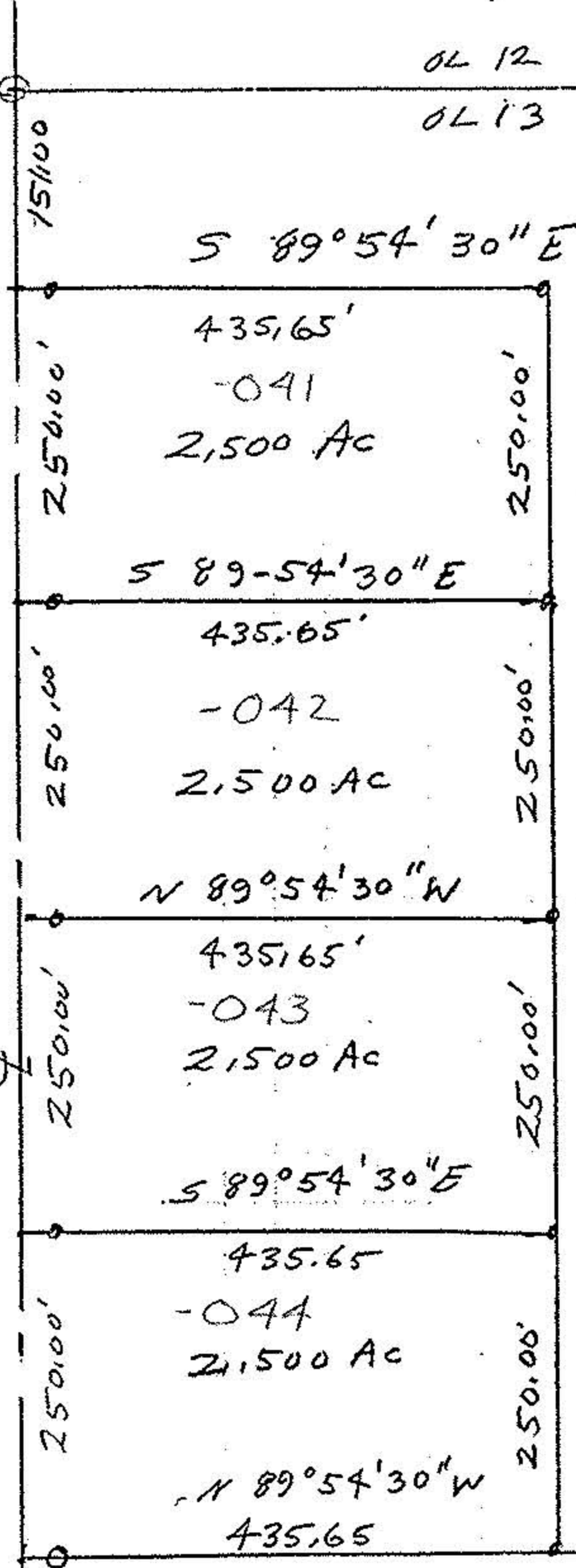


Carpenter Farms Inc
 DIV 905 Pg 954

40' ϕ Dye Rd

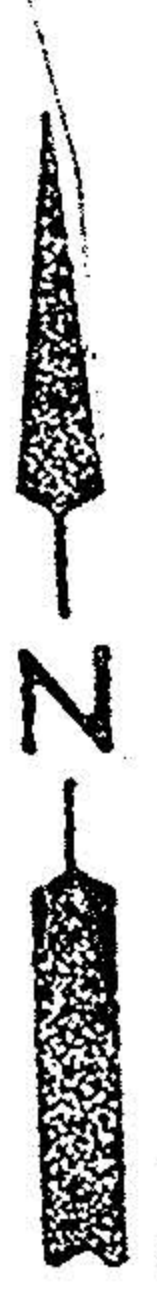
OL 12
 OL 13

S 0°44'30" E Reed Rd 60'



Carpenter Farms Inc
 DIV 905 Pg 954
 40,000 Ac by Deed

Carpenter Farms Inc
 DIV 1358 Pg 516

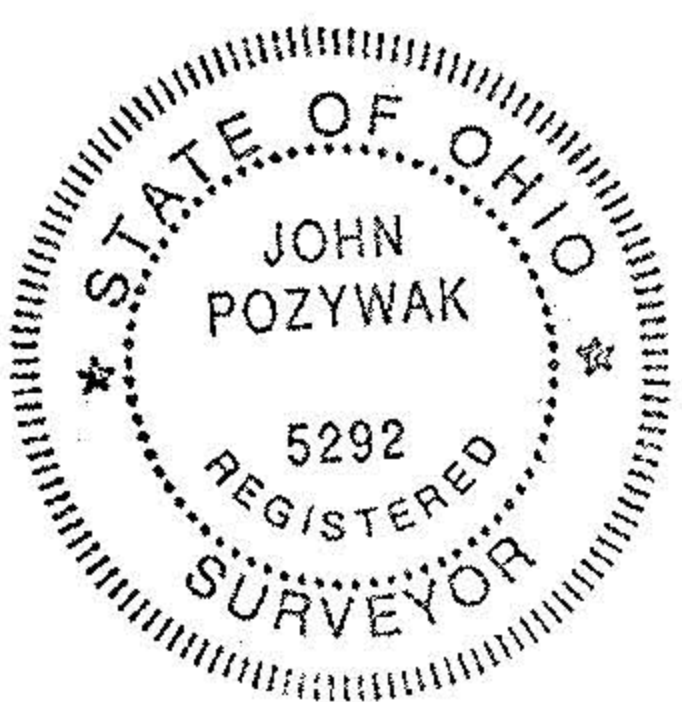


#00034
 APPROVED
 LORAIN CO.
 MAP DEPT.
 3-12-99
 11-00-013-A&B
 T. Spitz
 00034

- o iron pins fd
- o iron pins set
- 3010 fr ϕ

Sublot 19
 Homesite No 1
 P. Vol 16 Pg 19

Sublot 4



Survey of Parcel Splits
 Original Lot 13
 Eaton Township
 Lorain County Ohio
 Scale 1"=200' Jan 1998
 John Pozywak
 Reg Surveyor 5292