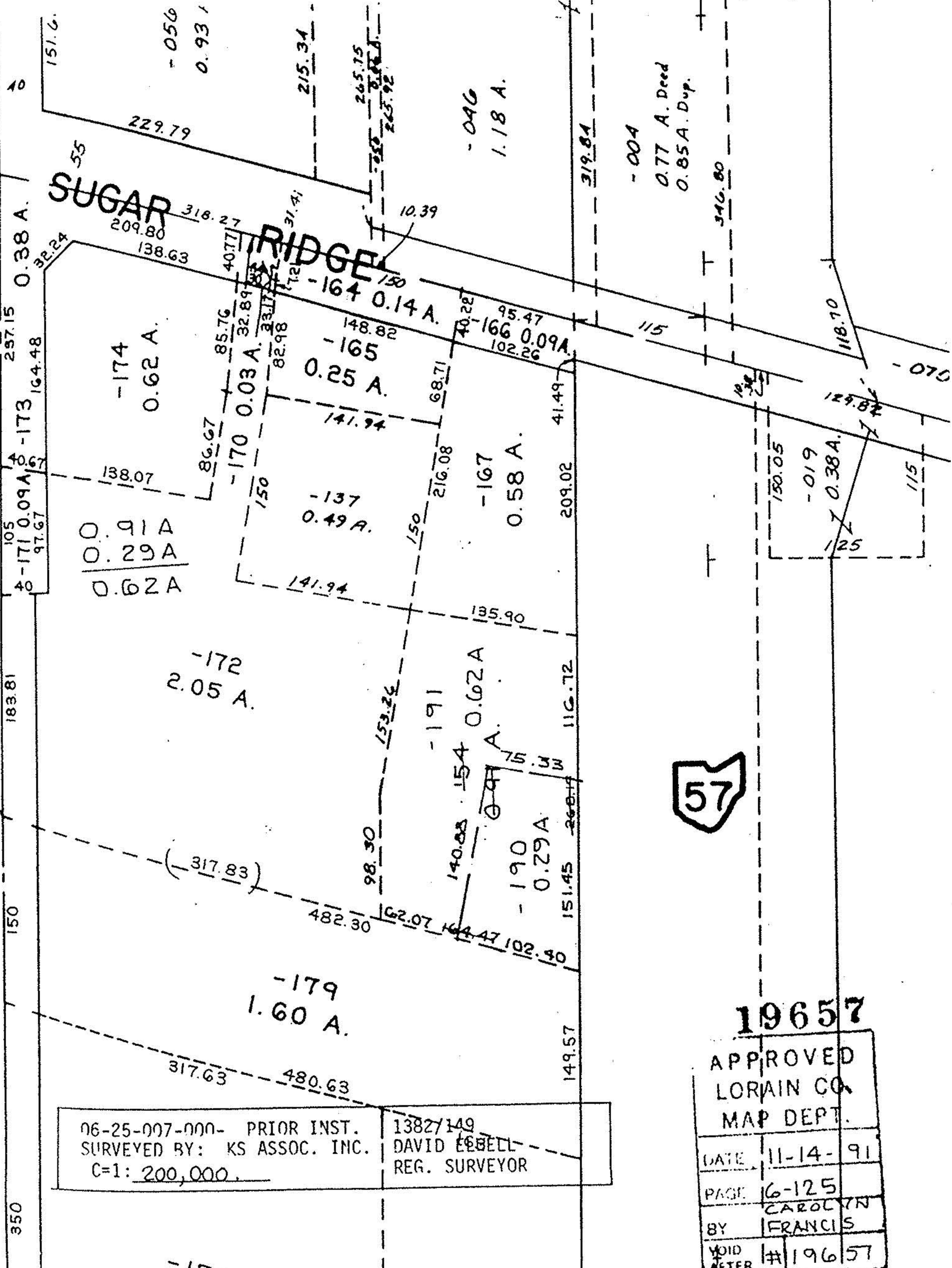


SEE 6-124
525.96

ABBEE RD



06-25-007-000- PRIOR INST.
 SURVEYED BY: KS ASSOC. INC.
 C=1: 200,000.

13827149
 DAVID EBBELL
 REG. SURVEYOR



19657

APPROVED LORAIN CO. MAP DEPT.		
DATE	11-14-	91
PAGE	6-125	
BY	FRANCIS	
VOID AFTER	#	19657

-170