

ELANOR M. PRYCE
VOL. 1035 PG. 324

N 89° 56' 32" W 2007.22'

1873.43 1P TO 1P

LOT SPLIT PARCEL 21.5716 AC.

RESIDUAL LANDS 3.4284 AC.

BOARD OF PARK COMMISSIONERS LORAIN COUNTY METROPOLITAN PARK DISTRICT
VOL 1393 PGS. 74-75-76

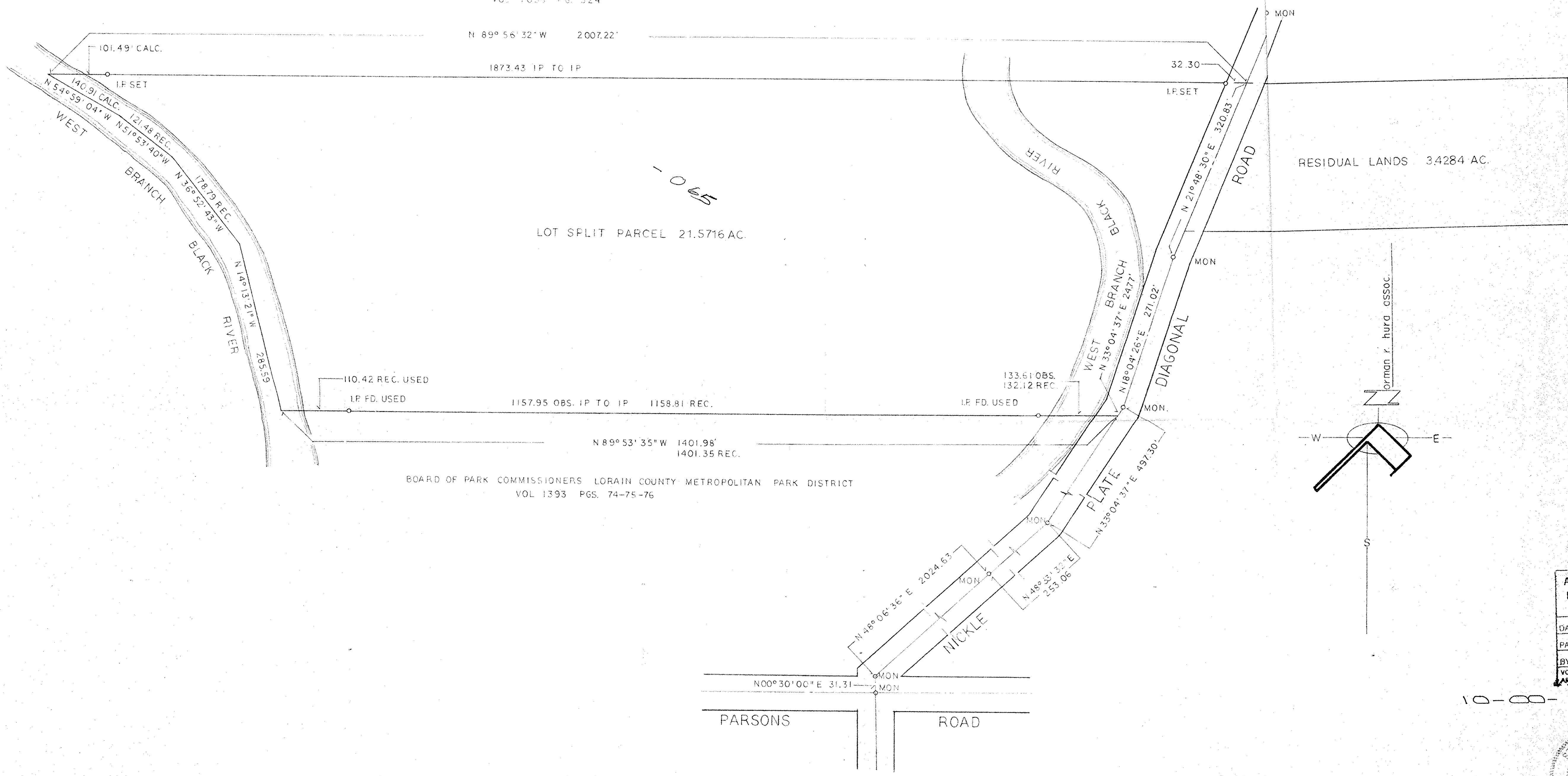
N 89° 53' 35" W 1401.98'
1401.35 REC.

LORAIN COUNTY METROPOLITAN PARK DISTRICT

LOT SPLIT FROM PPN 10 00 021 000 022
MARIAN H HORVATH
VOL. 0029 PG 0320

PART OF ORIGINAL LOT NO. 21
CARLISLE TOWNSHIP
LORAIN COUNTY OHIO

FEBRUARY 1993
SCALE 1"=100'



20325
 APPROVED
 LORAIN CO.
 MAP DEPT.
 DATE 4-14-93
 PAGE 10-E
 BY CAROLYN FRANCIS
 VOID AFTER # 20325

