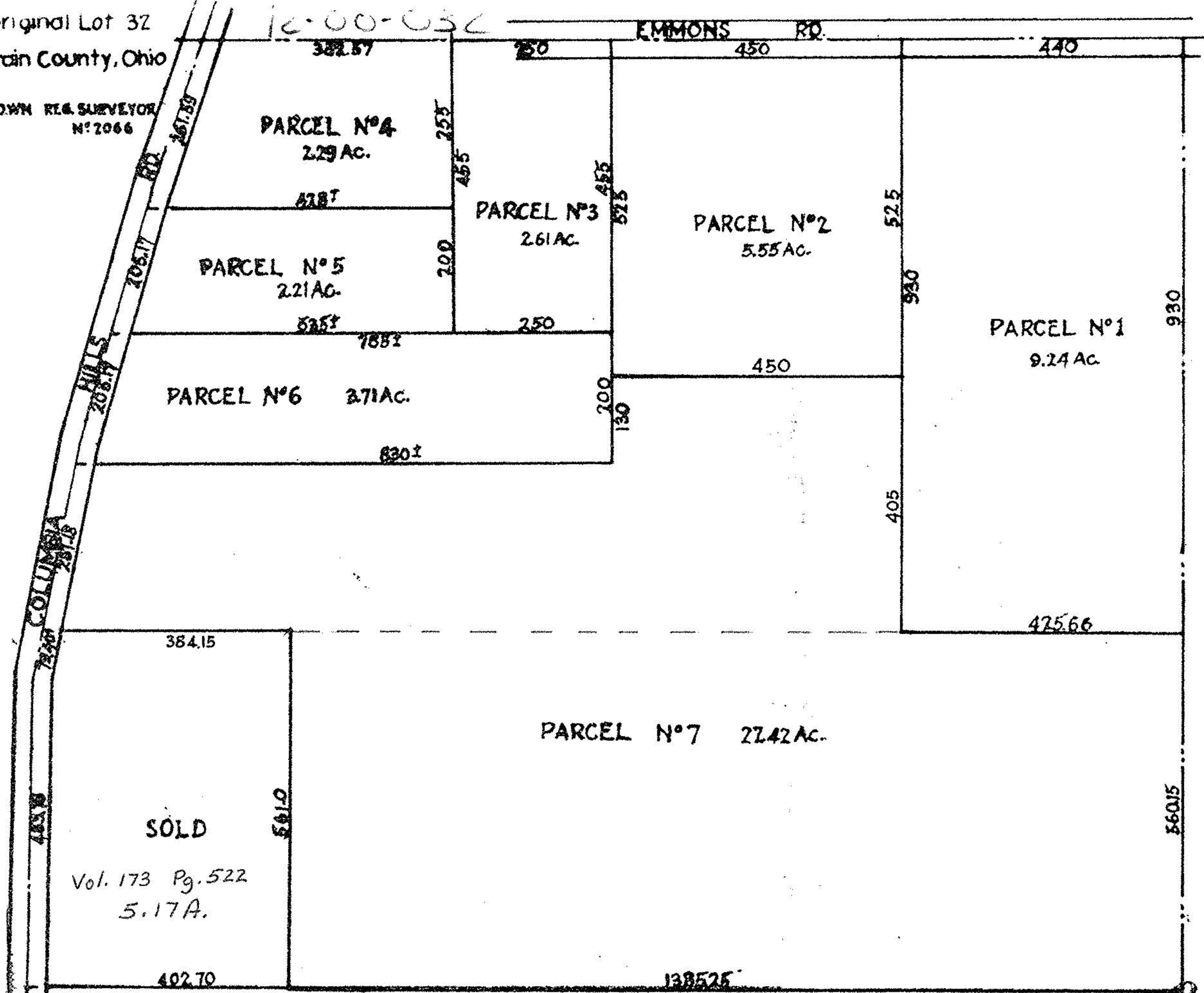


g part of Original Lot 32  
 ibia Twp. Lorain County, Ohio

H.A. BROWN REG. SURVEYOR  
 N: 2066

12-00-052

EMMONS RD.



34 Rods  
 = 561.4

$$43560 \times 5.17 \text{ ac} = \frac{225,205.20 \text{ sq ft}}{561} = 401.43$$

$$401.43 \times 561 = \frac{225,202.23 \text{ sq ft}}{43560} = 5.1699 \text{ ac}$$