

10698  
10699  
10700

-022  
1.00A.

-024  
1.00A.

-023  
1.00A.

-025  
1.00A.

-026  
1.00A.

-027  
1.23A.

APPROVED
LORAIN CO.
MAP DEPT.
DATE 7/1/77
PAGE 14-00-C14ND
BY [Signature]
VOID AFTER

pt. -036  
pt. 6.00A.

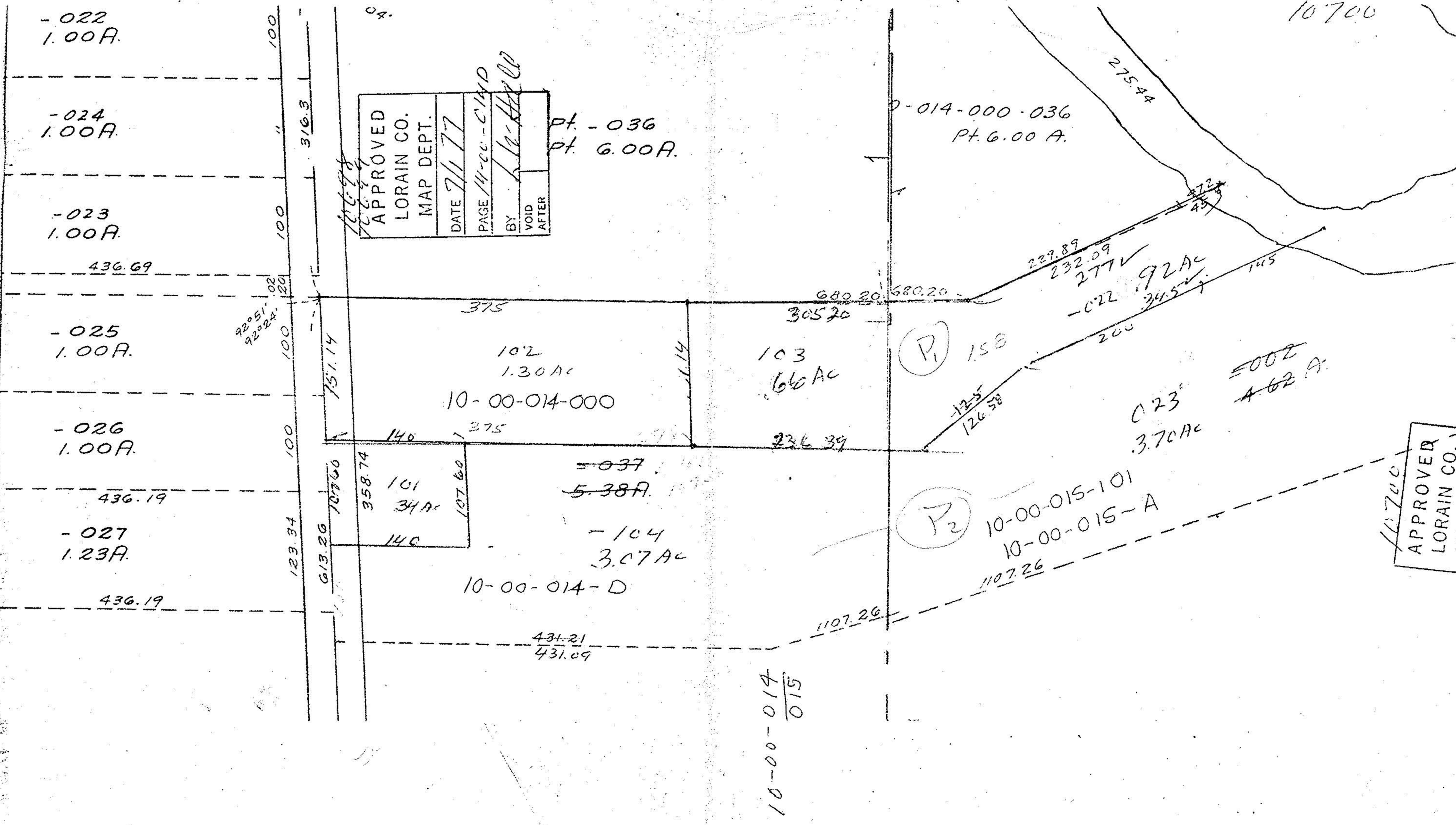
0-014-000-036  
pt. 6.00A.

10-00-014-000

10-00-014-D

10-00-015-101  
10-00-015-A

APPROVED
LORAIN CO.
MAP DEPT.



10-00-014  
015

10700