



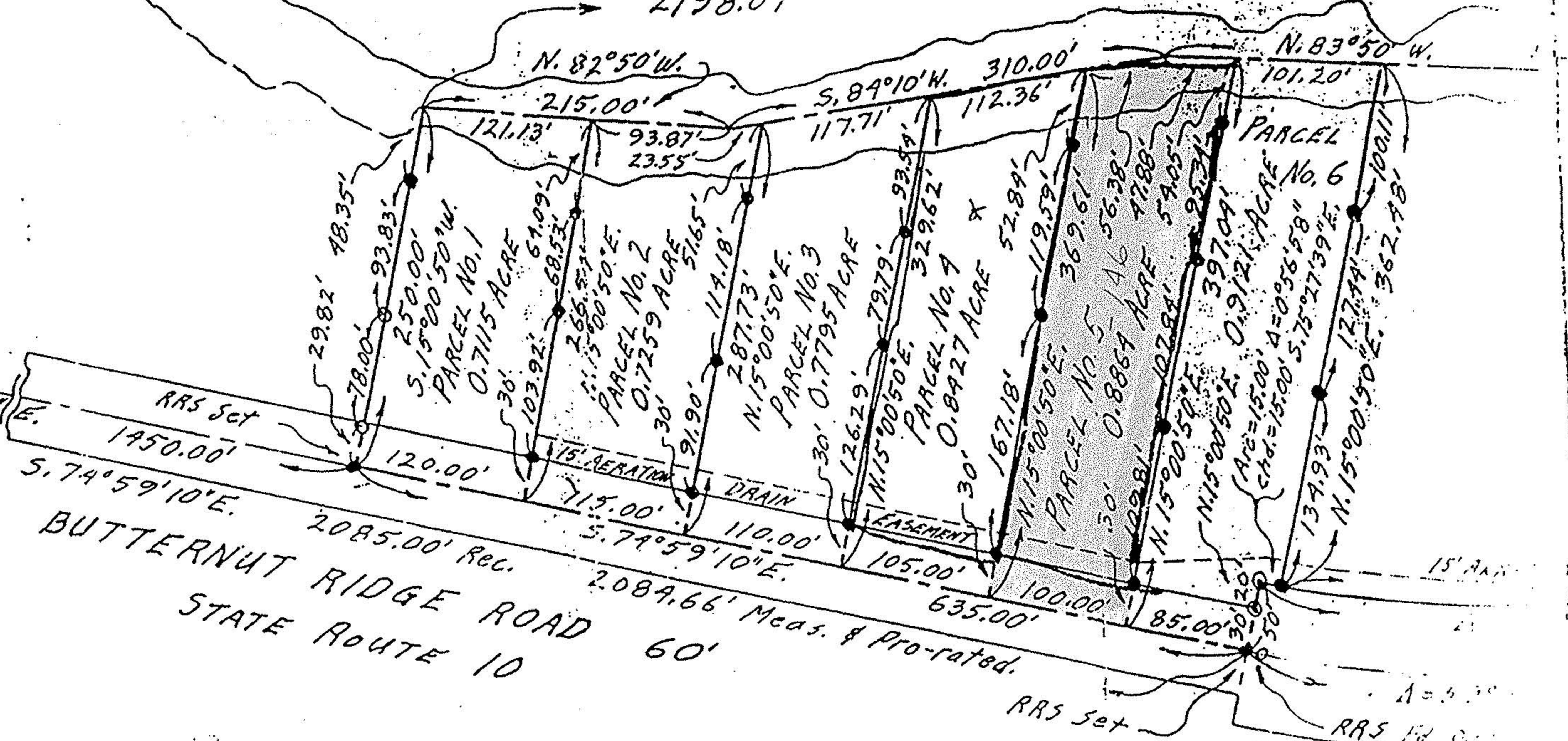
10-00-012-C

# 18107

10-00-012-000

ROAD U.S. ROUTE 20

(0.4163 Mile) of River Frontage WEST



#18107

APPROVED  
LORAIN CO.  
MAP DEPT.

DATE 9-6-88

PAGE 10-00-012-e

BY T. McMain

VOID AFTER 18107

BUTTERNUT RIDGE ROAD  
STATE ROUTE 10

2085.00' Reg.  
2084.66' Meas. & Pro-rated.  
60'

RRS Set

RRS Set  
According to