

Warren E. & Shirley Lauer
D. Vol. 848 PG 565 May 29-1963

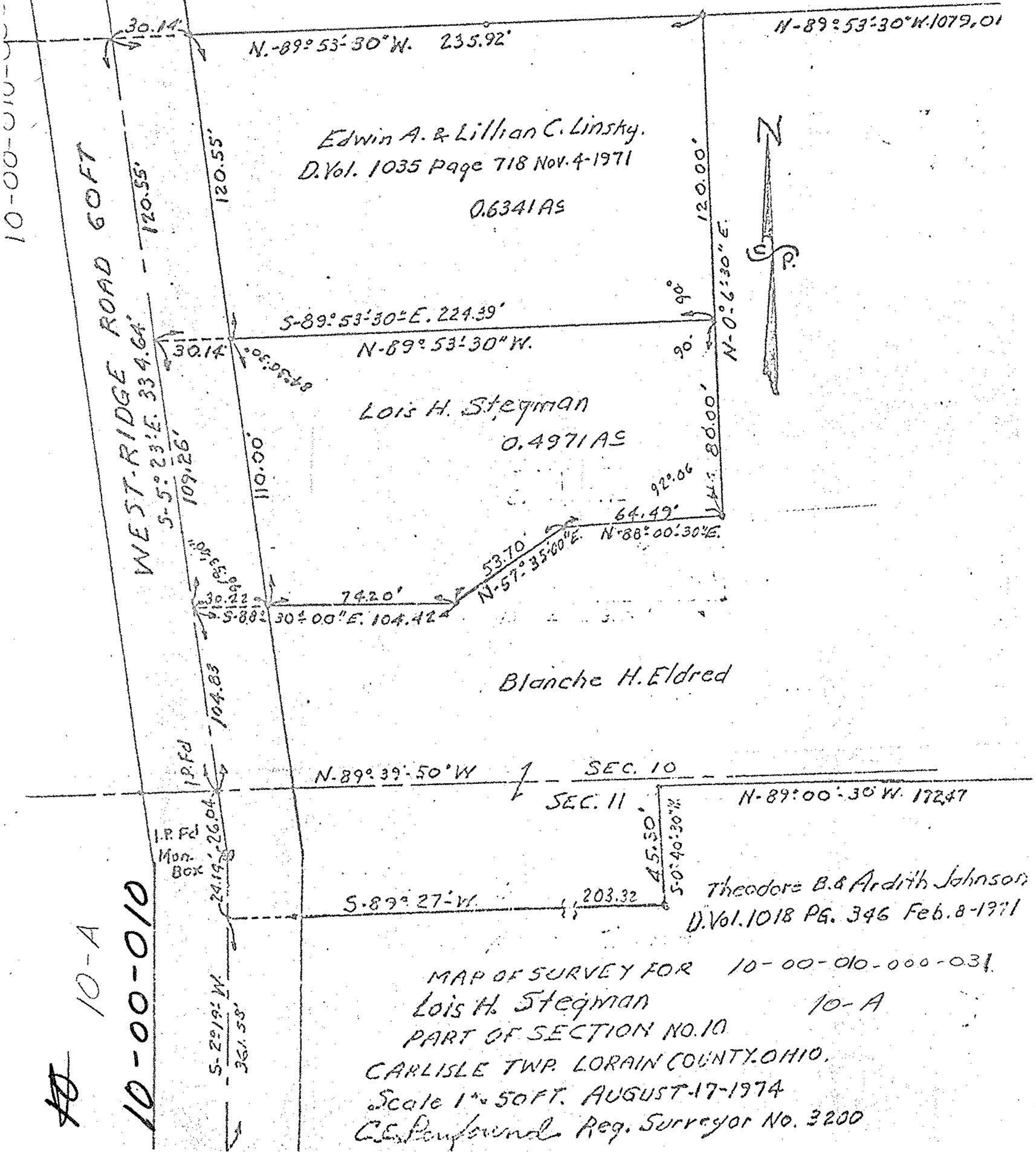
Edwin A. & Lillian C. Linsky.
D. Vol. 1035 Page 718 Nov. 4-1971
0.6341 AS

Lois H. Stegman
0.4971 AS

Blanche H. Eldred

Theodore B. & Ardith Johnson
D. Vol. 1018 PG. 346 Feb. 8-1971

MAP OF SURVEY FOR 10-00-010-000-031
Lois H. Stegman 10-A
PART OF SECTION NO. 10
CARLISLE TWP. LORAIN COUNTY, OHIO.
Scale 1" = 50 FT. AUGUST-17-1974
C.E. Penfound Reg. Surveyor No. 3200



10-A
10-00-010

10-00-010-000-031

WEST-RIDGE ROAD 60 FT

I.P.F.D.
Mon. Box

S-2°19' W
361.58'

24.19'

104.83'

109.26'

120.55'

30.14'

120.55'

334.64'

S-5°23'E

109.26'

104.83'

24.19'

10-00-010

N-89°53'30"W. 235.92'

S-89°53'30"E. 224.39'

N-89°53'30"W.

S-88°30'00"E. 104.42'

S-89°27' W.

SEC. 10

SEC. 11

203.32'

45.50'

S-0°40'30"W

92.06'

64.49'

N-57°35'00"E. 53.70'

N-88°00'30"E.

90°

90°

90°

90°

90°

90°

90°

90°

90°

90°

90°

90°

90°

90°

90°

90°

90°

N-89°53'30"W. 1079.01'

120.00'

120.00'

80.00'

80.00'

80.00'

80.00'

80.00'

80.00'

80.00'

80.00'

