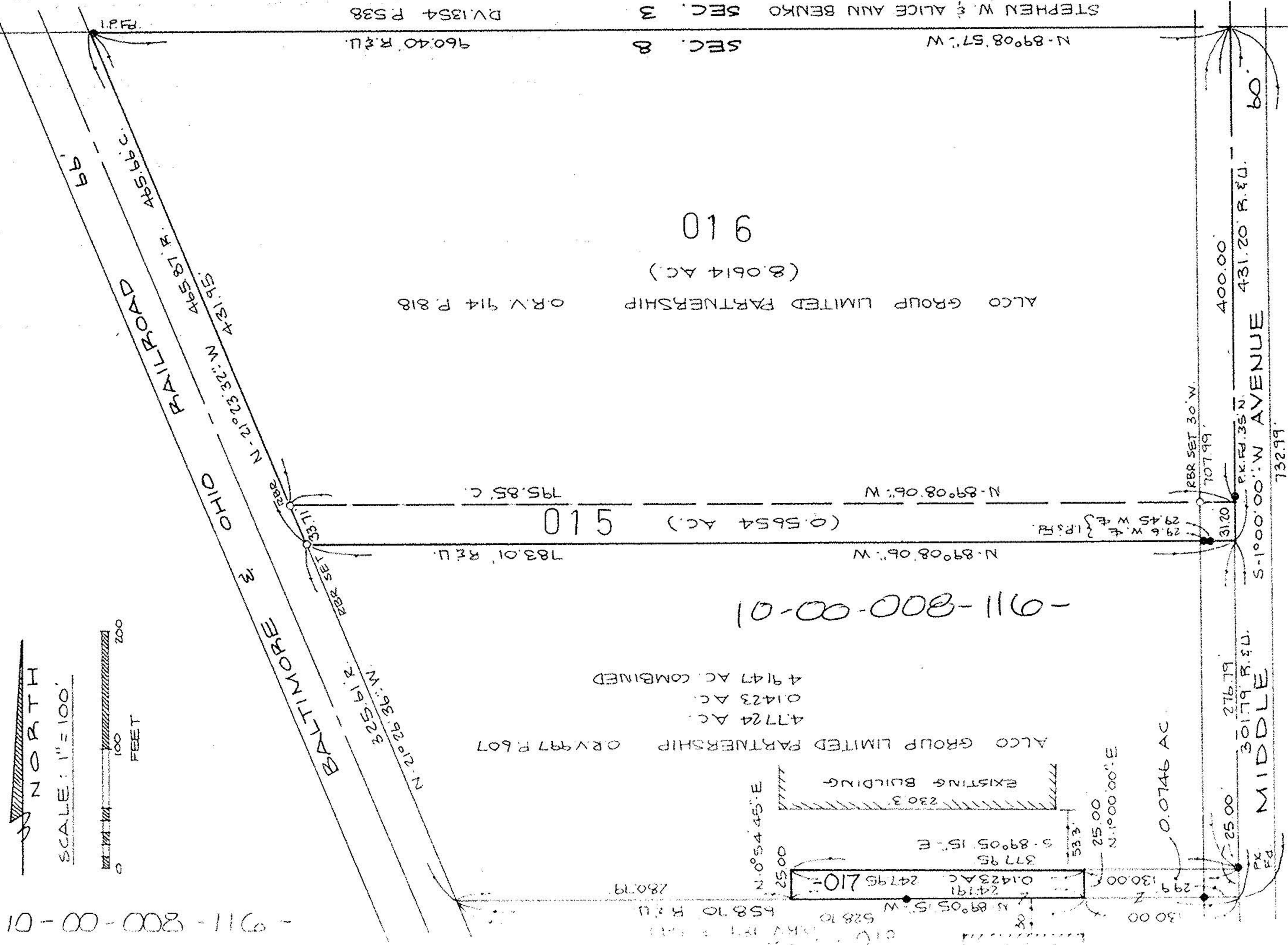


NORTH

SCALE: 1" = 100'



STEPHEN W & ALICE ANN BENKO SEC. 3
SEC. 8 N-89°08'57"W 960.40 R&L
D.V. 1354 P. 538

ALCO GROUP LIMITED PARTNERSHIP (8.0614 AC.)
O.R.V. 914 P. 818

ALCO GROUP LIMITED PARTNERSHIP O.R.V. 977 P. 607
4.7724 AC.
0.1423 AC.
4.9147 AC. COMBINED

015 (0.5654 AC.)
783.01' R&L
N-89°08'09"W
29.6' W & 1' P.S.R.

916
(8.0614 AC.)
ALCO GROUP LIMITED PARTNERSHIP
O.R.V. 914 P. 818

SURVEY MAP

PART OF CARLISLE TOWNSHIP
SECTION NO. 8
TOWNSHIP OF CARLISLE COUNTY OF LORAIN
STATE OF OHIO

PREPARED BY: KS ASSOCIATES INC.
ENGINEERS SURVEYORS

David A. Stowell
REG. SURV. NO. 6323
(1-08-96) REV. 1-24-96