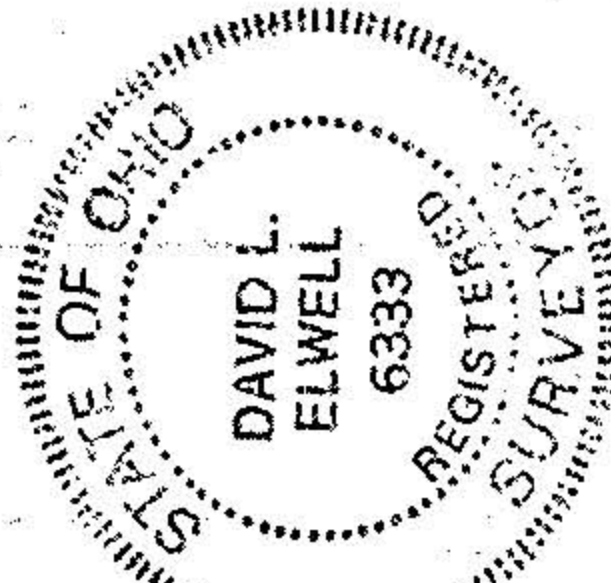
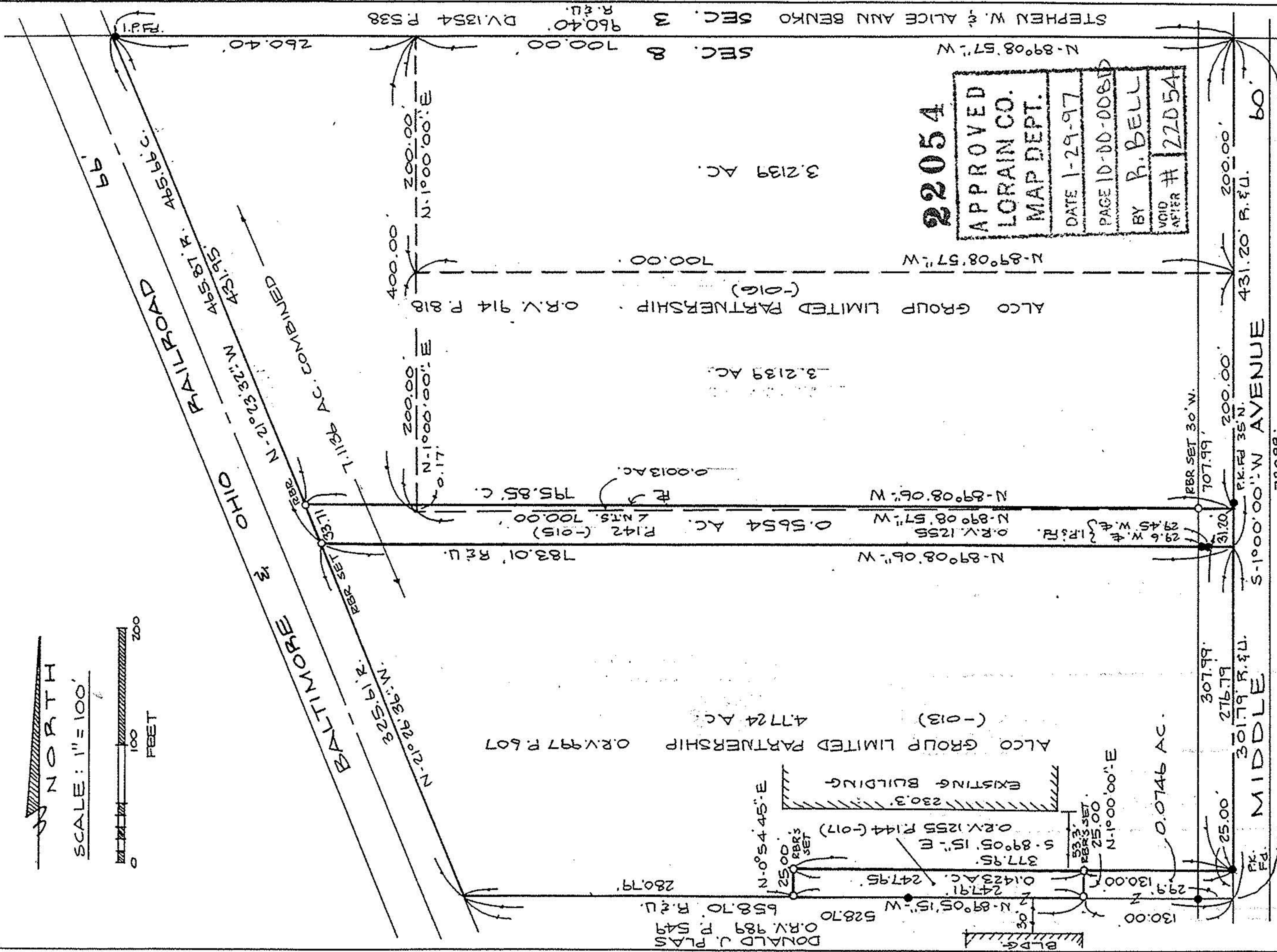
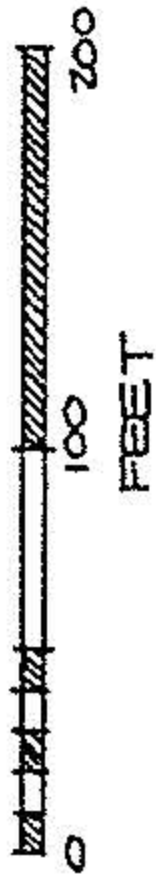


NORTH

SCALE: 1" = 100'



SURVEY MAP
PART OF CARLISLE TOWNSHIP
SECTION NO. 8
TOWNSHIP OF CARLISLE COUNTY OF LORAIN
STATE OF OHIO
PREPARED BY: KS ASSOCIATES INC.
ENGINEERS SURVEYORS

David L. Elwell
REG. SURV. NO. 6333
(1-08-96) REV. 1-24-96 REV. 2-12-96 REV. 3-27-96

22054
APPROVED
LORAIN CO.
MAP DEPT.
DATE 1-29-97
PAGE 10-00-0081D
BY R. BELL
VOID AFTER # 22054

Map annotations including bearings (e.g., N-89°08'57" W, S-89°05'15" E), distances (e.g., 130.00, 247.95, 528.70), and area calculations (e.g., 3.2139 AC, 0.0746 AC, 4.7724 AC). Includes references to 'ALCO GROUP LIMITED PARTNERSHIP' and 'DONALD J. PLAS'.